

DRAWING NUMBER
28-59

DRAWING NUMBER

DRAWING NUMBER

DRAWING NUMBER

65/82

65/82

59

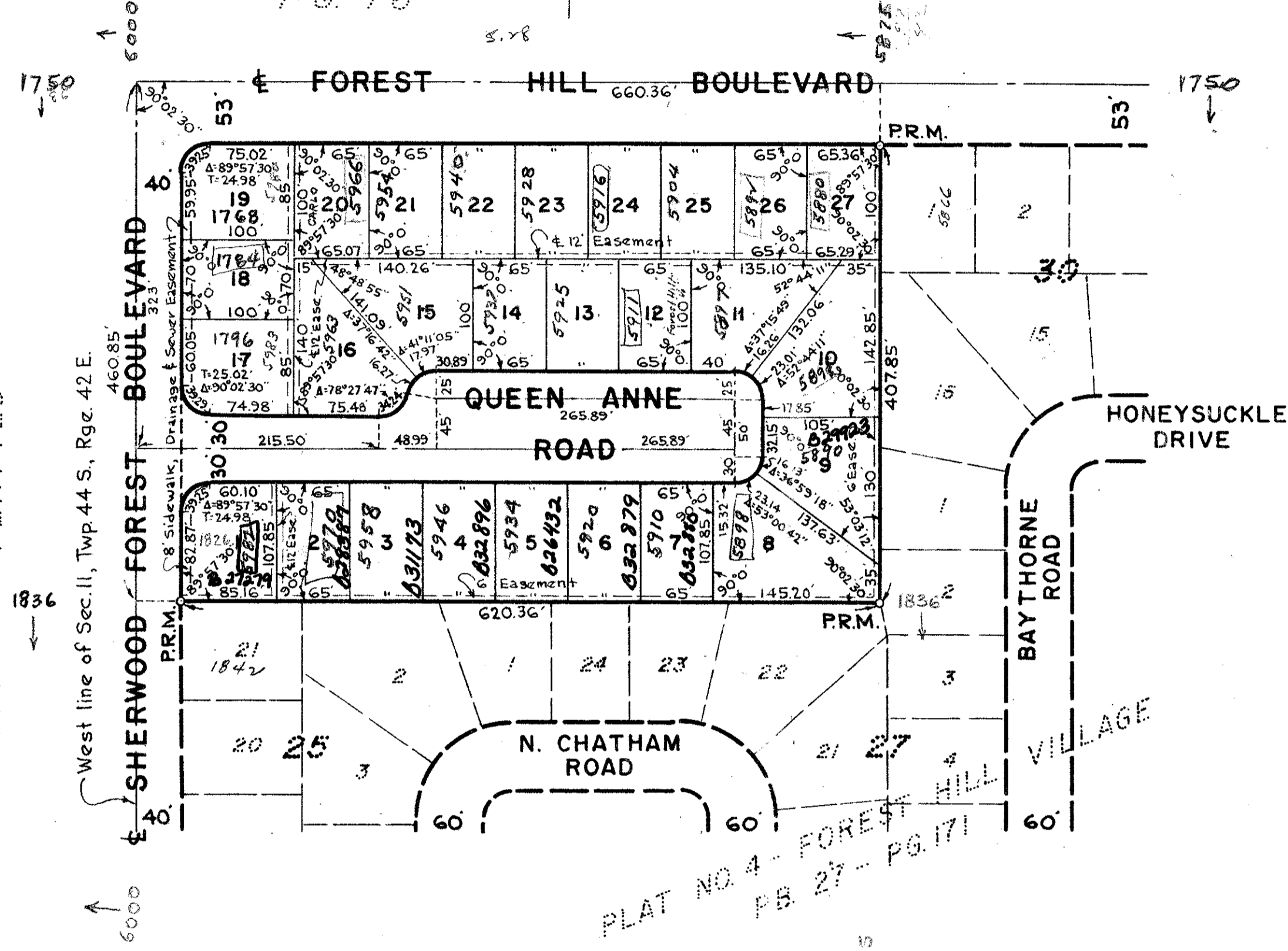
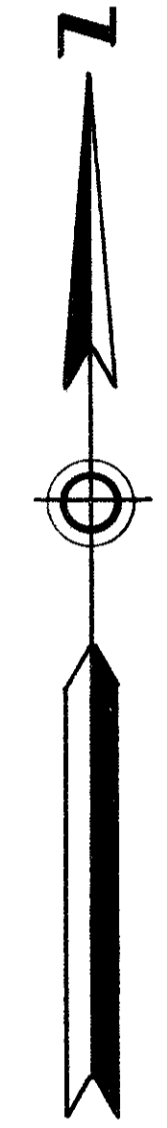
PLAT NO. 5 FOREST HILL VILLAGE

IN SECTION II, TWP. 44 S., RGE. 42 E.
PALM BEACH COUNTY, FLORIDA
Being a Replat of Tract "E" and adjacent Service Road, Plat No. 4, Forest Hill Village,
recorded in Plat Book 27, Page 171, Public Records of Palm Beach County, Fla.
(Returned to Acreage - See Official Record Book III, Pg. 553.)

STATE OF FLORIDA
COUNTY OF PALM BEACH
This Plat was filed for record at 1:57 P.M.
this 15th day of January
1965, and duly recorded in Plat Book No.
28 on page 59
JAMES W. WARD, Clerk Circuit Court
By *Bertie M. Gibson*, D. C.

PLAT NO. 1
FOREST MANOR
PB. 28 - PG. 17

PB. 5 -
PG. 76



NOT PLATTED

STATE OF FLORIDA
COUNTY OF PALM BEACH
KNOW ALL MEN BY THESE PRESENTS, THAT FOREST HILL VILLAGE, INC., A FLORIDA CORPORATION, THE OWNER OF THE TRACT OF LAND LYING AND BEING IN SECTION II, TOWNSHIP 44 SOUTH, RANGE 42 EAST, PALM BEACH COUNTY, FLORIDA, SHOWN HEREBY AS PLAT NO. 5, FOREST HILL VILLAGE, AND MORE PARTICULARLY DESCRIBED AS FOLLOWS, TO WIT:
ALL OF TRACT "E" AND THE ADJOINING SERVICE ROAD RIGHT-OF-WAY, PLAT NO. 4, FOREST HILL VILLAGE, ACCORDING TO THE PLAT THEREOF ON FILE IN THE OFFICE OF THE CLERK OF CIRCUIT COURT, IN AND FOR PALM BEACH COUNTY, FLORIDA, RECORDED IN PLAT BOOK 27, PAGE 171. (Now returned to Acreage - See Official Record Bk. III, Pg. 553.)
HAS CAUSED THE SAME TO BE SURVEYED AND PLATTED AS SHOWN HEREON AND DOES HEREBY DEDICATE TO THE PERPETUAL USE OF THE PUBLIC, AS A PUBLIC HIGHWAY, THE STREET SHOWN HEREON, AND THE USE OF THE EASEMENTS FOR THE CONSTRUCTION AND MAINTENANCE OF PUBLIC UTILITIES, AND/OR DRAINAGE.
IN WITNESS WHEREOF, THE SAID CORPORATION HAS CAUSED THESE PRESENTS TO BE SIGNED BY ITS PRESIDENT AND ATTESTED BY ITS SECRETARY AND ITS CORPORATE SEAL TO BE AFFIXED HERETO, BY AND WITH THE AUTHORITY OF ITS BOARD OF DIRECTORS, THIS 10th DAY OF December, A.D. 1964.

FOREST HILL VILLAGE, INC.
ATTEST: *Ruth C. Abramson* SECRETARY
By: *Stephen Abramson* PRESIDENT

STATE OF FLORIDA
COUNTY OF PALM BEACH
I HEREBY CERTIFY, THAT ON THIS DAY PERSONALLY APPEARED BEFORE ME, AN OFFICE DULY AUTHORIZED TO ADMINISTER OATHS AND TAKE ACKNOWLEDGMENTS, STEPHEN ABRAMSON AND RUTH C. ABRAMSON, PRESIDENT AND SECRETARY, RESPECTIVELY, OF FOREST HILL VILLAGE, INC., A FLORIDA CORPORATION, TO ME WELL KNOWN AND KNOWN TO ME TO BE THE INDIVIDUALS DESCRIBED IN, AND WHO EXECUTED THE FOREGOING DEDICATION, AND THEY ACKNOWLEDGED BEFORE ME THAT THEY EXECUTED THE SAME AS SUCH OFFICERS OF SAID CORPORATION, BY AND WITH THE AUTHORITY OF ITS BOARD OF DIRECTORS FOR THE PURPOSES THEREIN EXPRESSED, AND THAT THEIR ACT AND DEED WAS THE ACT AND DEED OF SAID CORPORATION.
WITNESS MY HAND AND OFFICIAL SEAL AT WEST PALM BEACH, COUNTY OF PALM BEACH AND STATE OF FLORIDA, THIS 10th DAY OF December, A.D. 1964.

John J. Flowers
NOTARY PUBLIC

MY COMMISSION EXPIRES: Aug. 7, 1965

NOTE
ALL BLOCK CORNERS ARE ROUNDED WITH A 25 FOOT RADIUS CURVE, UNLESS OTHERWISE SHOWN.
EASEMENTS ARE FOR PUBLIC UTILITIES, UNLESS OTHERWISE NOTED.

NOTE
BUILDING SETBACK LINES SHALL BE AS REQUIRED BY PALM BEACH COUNTY ZONING REGULATIONS.
THERE SHALL BE NO BUILDING OR OTHER STRUCTURES PLACED ON UTILITY EASEMENTS.
THERE SHALL BE NO BUILDINGS OR ANY KIND OF CONSTRUCTION OR TREES OR SHRUBS PLACED ON DRAINAGE EASEMENTS.

STATE OF FLORIDA
COUNTY OF PALM BEACH
I HEREBY CERTIFY, THAT THE PLAT SHOWN HEREON IS A TRUE AND CORRECT REPRESENTATION OF A SURVEY, MADE UNDER MY DIRECTION, OF THE FOREGOING DESCRIBED PROPERTY, AND THAT SAID SURVEY IS ACCURATE TO THE BEST OF MY KNOWLEDGE AND BELIEF, AND THAT ALL NECESSARY EASEMENT AGREEMENTS (P.R.M.) HAVE BEEN FILED AS REQUIRED BY LAW.

Robert C. Rodgers
REGISTERED LAND SURVEYOR
FLORIDA CERTIFICATE NO. 1475

APPROVED: JANUARY 16, A.D. 1965
CLERK OF COUNTY COMMISSIONERS
BY: *Lou Loyal*
BY: *W. L. ...*
ASS'T. COUNTY ENGINEER

1000-213

BROCKWAY, WEBER & BROCKWAY
ENGINEERS, INCORPORATED
WEST PALM BEACH, FLORIDA

PLAT NO. 5
FOREST HILL VILLAGE

SCALE: 1" = 100'
DATE: NOVEMBER 1964
HC-24-A