

PLAT NO. 3 BAHAMA HEIGHTS

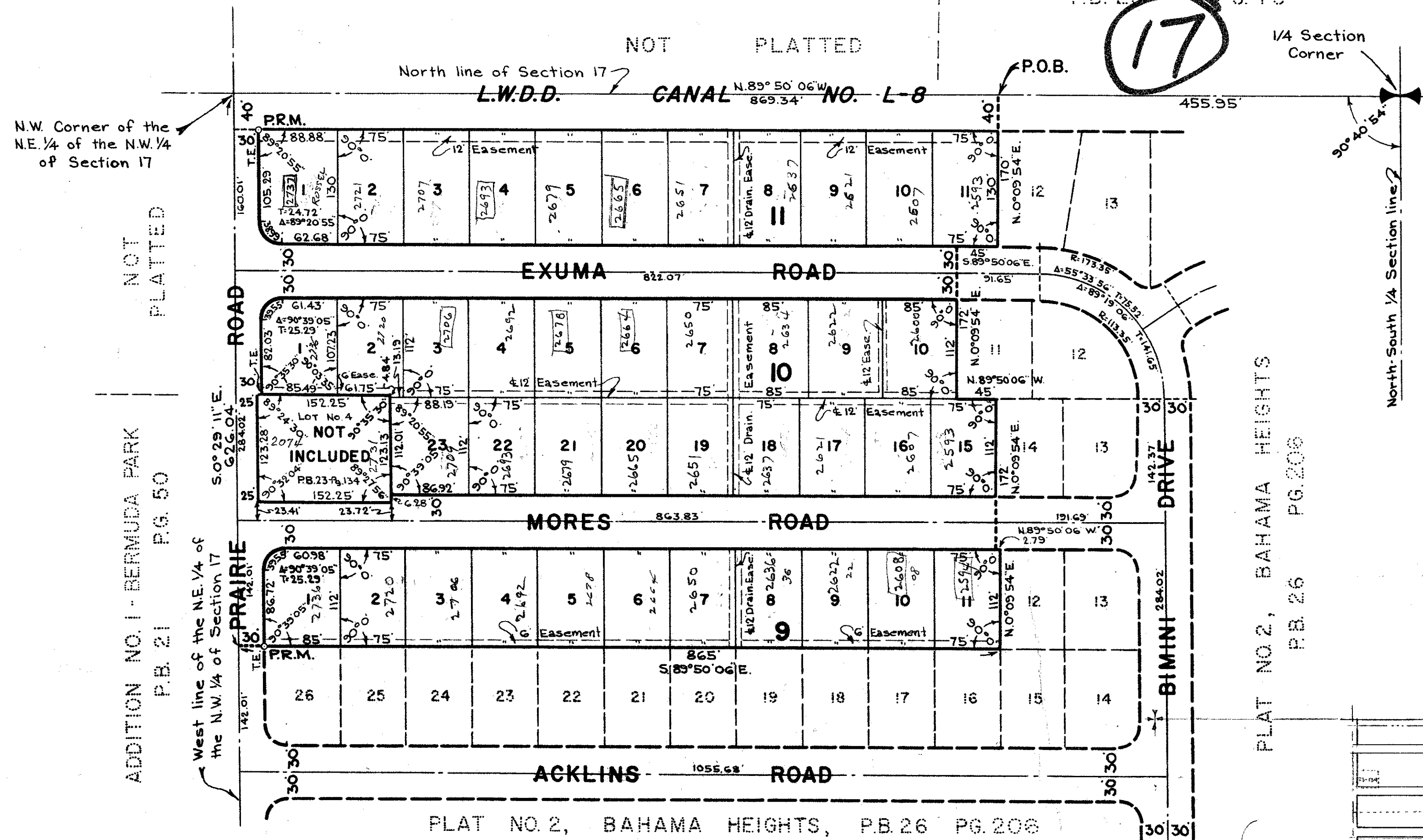
IN THE NW 1/4 OF SECTION 17, TWP. 44 S., RGE. 43 E.

PALM BEACH COUNTY, FLORIDA

Being a Replat of Lots 1,2,3,5,37 and 38, and part of Lots 6, 36 and 39,
Addition No. 2, Bermuda Park as recorded in Plat Book 23, Page 134, Public
Records of Palm Beach County, Florida and other lands.

R-1A 3-A-660106

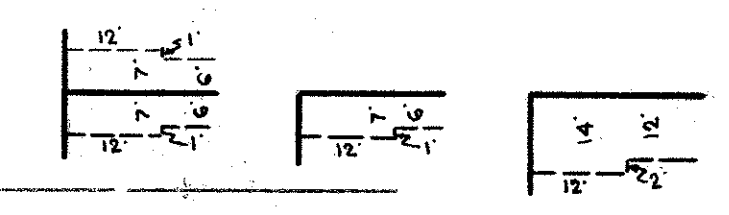
MEADOW PARK NO. 3
P.B. 25 PG. 75



STATE OF FLORIDA
COUNTY OF PALM BEACH ss
This Plat was filed for record at 9:42 A.M.
this 14th day of DECEMBER
1965, and duly recorded in Plat Book No.
28 on page 98
JOHN B. DUNKLE Clerk Circuit Court
By Bertha M. Gibson, D. C.

NOTE:
Building Setback Lines shall be as required by
Palm Beach County Zoning Regulations.
There shall be no buildings or other structures
place on Utility Easements.
There shall be no building or any kind of con-
struction, or trees or shrubs placed on Drain-
age Easements.

NOTE:
All Block Corners are rounded with a 25 ft.
radius curve, unless otherwise shown.
Easements are for Public Utilities, unless
otherwise noted.
Tank Easements (T.E.)



STATE OF FLORIDA
COUNTY OF PALM BEACH ss

KNOW ALL MEN BY THESE PRESENTS, that V. K. C., INC., a Florida Corpor-
ation, the owners of the tract of land lying and being in Section 17, Township 44 South, Range 43 East,
Palm Beach County, Florida, shown hereon as PLAT NO. 3, BAHAMA HEIGHTS, and more particularly
described as follows, to wit:

Beginning at a point in the north line of said Section 17 at a distance of 455.95 feet westerly from
(measured along said north Section line) the Quarter Section Corner therein; thence continue N89°50'
06"W. along said north Section line, a distance of 869.34 feet, more or less, to the northwest corner
of the Northeast Quarter (NE 1/4) of the Northwest Quarter (NW 1/4) of said Section 17 (for con-
venience the south line of said Northwest Quarter (NW 1/4) is assumed to bear East-West and all
other bearings shown hereon are relative thereto); thence S.0°29'11"E. along the west line of said
Northeast Quarter (NE 1/4) of the Northwest Quarter (NW 1/4), a distance of 626.04 feet, more or less,
to a point in the westerly extension of the north line of Lot 26, Block 9 as shown on Plat No. 2, Bahama
Heights recorded in Plat Book 26, Page 206, Public Records of Palm Beach County, Florida; thence
S.89°50'06"E. along the north line of said Lot 26 and its easterly extension, a distance of 865 feet;
thence N.0°09'54"E., a distance of 112 feet; thence N.89°50'06"W., a distance of 2.79 feet; thence N.0°
09'54"E., a distance of 172 feet; thence N.89°50'06"W., a distance of 45 feet; thence N.0°09'54"E.,
a distance of 172 feet; thence S.89°50'06"E., a distance of 45 feet; thence N.0°09'54"E., a distance of
170 feet, more or less, to the Point of Beginning.

EXCEPTING therefrom, Lot 4 of Addition No. 2, Bermuda Park, according to the plat thereof
recorded in Plat Book 23, Page 134, Public Records of Palm Beach County, Florida, and shown
hereon as "NOT INCLUDED".

SUBJECT to existing canal right of way.

has caused the same to be surveyed and platted as shown hereon and does hereby dedicate to the perpetual
use of the public, as public highways and waterways, the Roads and Canal shown hereon, and the use of
the Easements for the construction and maintenance of Public Utilities, and/or Drainage Purposes.

IN WITNESS WHEREOF, the said Corporation has caused these presents to be signed
by its President and attested by its Secretary and its corporate seal to be affixed hereto, by and
with the authority of its Board of Directors, this 16th day of April, A.D. 1965.

V. K. C., INC.

Attest: Ruth V. Cushman Secretary By V. K. Cushman President

STATE OF FLORIDA
COUNTY OF PALM BEACH ss

I HEREBY CERTIFY, that on this day personally appeared before me, an
officer duly authorized to administer oaths and take acknowledgments, V.K. CUSHMAN
and RUTH V. CUSHMAN, President and Secretary, respectively, of
V. K. C., INC., a Florida Corporation, to me well known and known to me to
be the individuals described in, and who executed the foregoing dedication, and they
acknowledged before me that they executed the same as such officers of said Corpor-
ation, by and with the authority of its Board of Directors for the purposes therein
expressed, and that their act and deed was the act and deed of said Corporation.
WITNESS my hand and official seal at West Palm Beach, County of
Palm Beach and State of Florida, this 16th day of April, A.D. 1965.

John J. Slawson
Notary Public

My Commission expires: Aug. 7, 1965

STATE OF FLORIDA
COUNTY OF PALM BEACH ss

I HEREBY CERTIFY, that the plat shown hereon is a true and cor-
rect representation of a survey, made under my direction, of the foregoing describ-
ed property, and that said survey is accurate to the best of my knowledge and belief,
and that permanent reference monuments (P.R.M.) have been placed as required by law.

Kenneth J. Cushman
Registered Land Surveyor
Florida Certificate No. 1355

Approved: December 14, A.D. 1965.
Board of County Commissioners

By: Late Lytal
Chairman

By: [Signature]
County Engineer

1000-223

BROCKWAY, WEBER & BROCKWAY
ENGINEERS, INCORPORATED
WEST PALM BEACH, FLORIDA

PLAT NO. 3
BAHAMA HEIGHTS

FIELD: L. A. M.	SCALE: 1" = 100'	Dwg. No.
OFFICE: RER	DATE: JUNE 1960	58-55
DR. BY: MGB	PL. No. B-114, Pg. 63	65-238

DRAWING NUMBER 28-94
PLANNED CORPORATION - IRVINE, CALIFORNIA
REGISTERED BY NUMBER 170247
PORTION COPIED FROM PLAT NO. 1

