

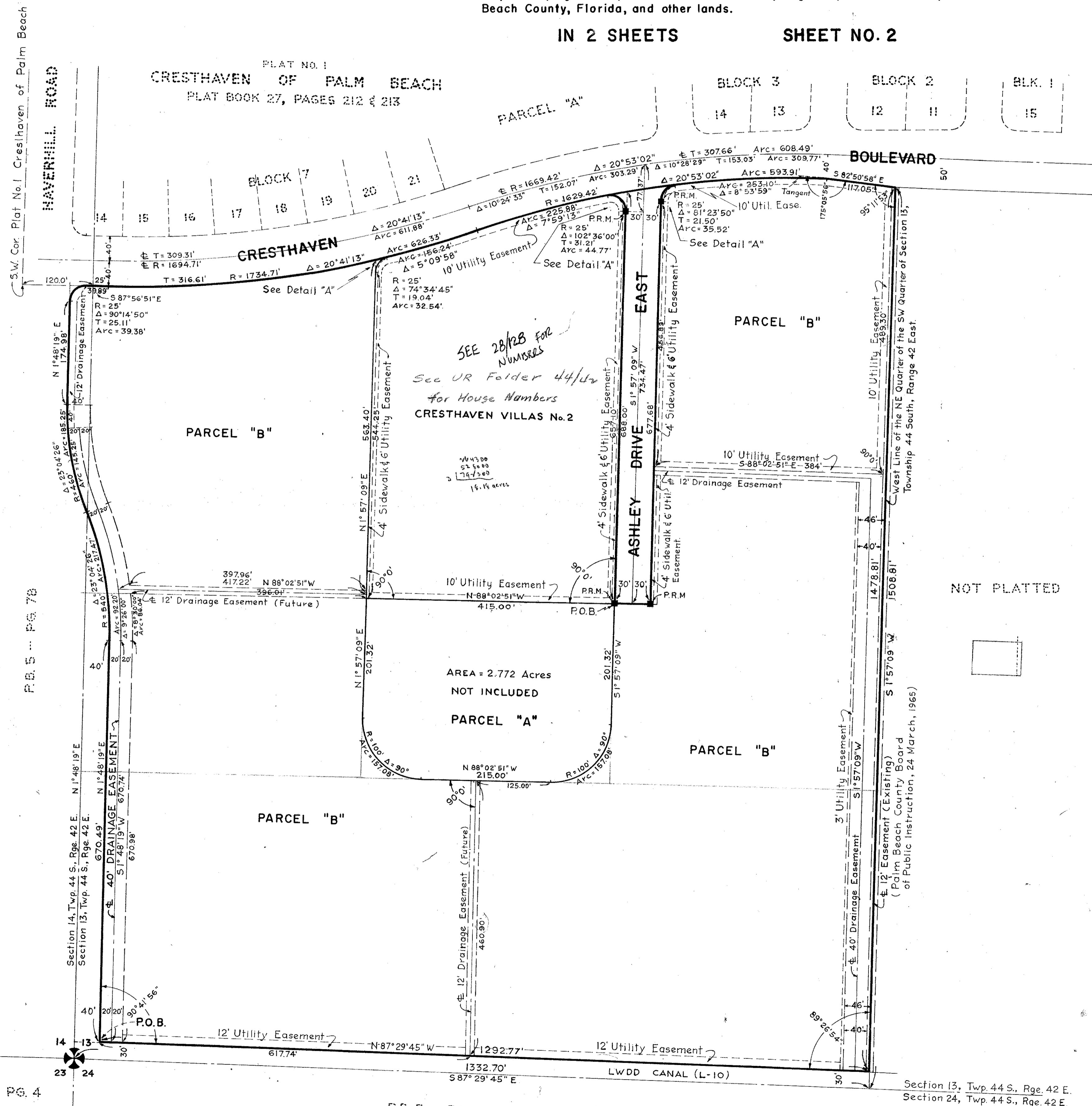
PLAT NO. 2 CRESTHAVEN OF PALM BEACH

IN SECTIONS 13 & 14, TOWNSHIP 44 South, RANGE 42 East
PALM BEACH COUNTY, FLORIDA

Being a Replat of Part of Tract 7, MODEL LAND Co. SUBDIVISION of Section 14,
Twp. 44 S., Rge. 42 E., recorded in Plat Book 5, Page 78, Public Records, Palm
Beach County, Florida, and other lands.

IN 2 SHEETS SHEET NO. 2

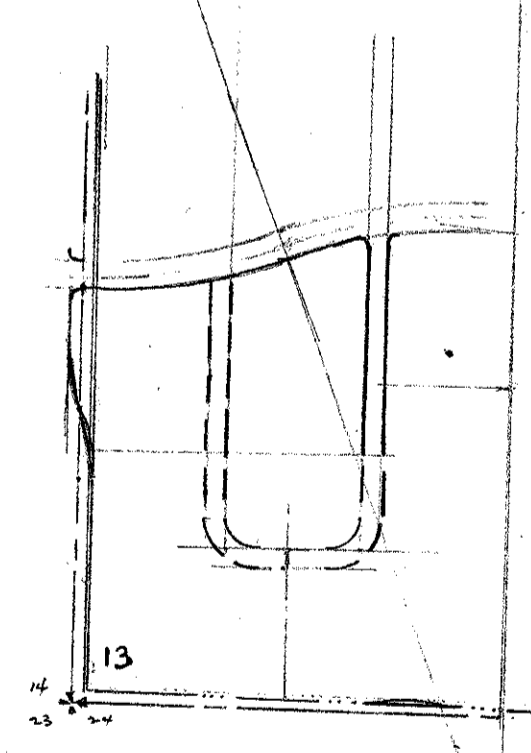
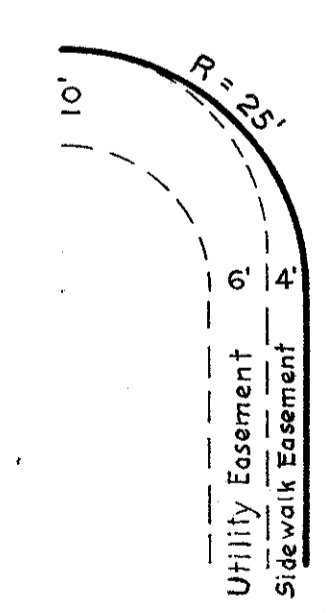
STATE OF FLORIDA
COUNTY OF PALM BEACH
This Plat was filed for record at 4:16 P.M.
this 23rd day of August
1966 and duly recorded in Plat Book No.
28 on page 121
JOHN B. DUNKLE, Clerk Circuit Court
By _____, D. C.



NOTE
Building Setback Lines shall be as required by Palm Beach County Zoning Regulations. There shall be no buildings or other structures placed on Utility Easements.
There shall be no buildings or any kind of construction or trees or shrubs placed on Drainage Easements.

NOTE
All Block Corners are rounded with a 25 ft. radius curve, unless otherwise shown. Easements are for Public Utilities, unless otherwise noted.
Anchor Easement (A.E.).

Parcels "A" and "B" will not be used for building purposes until replatted.



0231-302 (28/120 OVER)

BROCKWAY, OWEN & ANDERSON ENGINEERS, INCORPORATED WEST PALM BEACH, FLORIDA	
PLAT NO. 2 CRESTHAVEN OF PALM BEACH IN 2 SHEETS SHEET NO. 2	
FIELD: J.K.A.	SCALE: 1" = 100'
OFFICE: R.E.R.	No. 65-772
DR. BY: A.T.R.	DATE: AUG. 1966
FIELD BK. C-87 Pg. 67	Dwg. No. 28/121