

4:36 P.M.
No V.
126
Bertha M. Dubois

CYPRESS VILLAS

LYING IN SECTION 24, TOWNSHIP 45 SOUTH, RANGE 42, EAST
PALM BEACH COUNTY, FLORIDA.

AUGUST, 1966 SCALE 1"=50'
O'BRIEN, SUITER & O'BRIEN, INC.
REGISTERED LAND SURVEYORS
GRAPHIC SCALE

ZONED R-2 ~~subject to Development~~
House Number on other side

DEDICATION:

STATE OF FLORIDA
COUNTY OF PALM BEACH SS

KNOW ALL MEN BY THESE PRESENTS THAT S. I. T. CORPORATION, A FLORIDA CORPORATION, THE OWNER OF THE TRACT OF LAND SHOWN HEREON AS CYPRESS VILLAS, SITUATE, LYING AND BEING IN THE COUNTY OF PALM BEACH, STATE OF FLORIDA, AND MORE PARTICULARLY DESCRIBED AS FOLLOWS: COMMENCE AT THE WEST QUARTER SECTION CORNER OF SECTION 24, TOWNSHIP 45 SOUTH, RANGE 42 EAST, PALM BEACH COUNTY, FLORIDA; THENCE EAST, ALONG THE EAST-WEST QUARTER SECTION LINE OF SAID SECTION 24, A DISTANCE OF 50 FEET; THENCE NORTH, ALONG A LINE 50 FEET EAST OF AND PARALLEL WITH THE WEST LINE OF SAID SECTION 24, A DISTANCE OF 3 FEET TO THE POINT OF BEGINNING OF THE PARCEL HEREIN DESCRIBED; THENCE N. 89° 55' 55" E., ON AN ASSUMED BEARING, ALONG A LINE 3 FEET NORTH OF AND PARALLEL WITH THE AFOREMENTIONED QUARTER SECTION LINE, A DISTANCE OF 529.87 FEET; THENCE N. 38° 23' 54" W. A DISTANCE OF 445.76 FEET; THENCE S. 89° 51' 45" W. A DISTANCE OF 253 FEET TO A POINT IN A LINE 50 FEET EAST OF AND PARALLEL WITH THE SAID WEST LINE OF SECTION 24, THENCE SOUTH ALONG SAID LINE A DISTANCE OF 349.37 FEET TO THE POINT OF BEGINNING.

HAS CAUSED THE SAME TO BE SURVEYED AND PLATTED AS SHOWN HEREON AND DOES HEREBY DEDICATE TO THE PERPETUAL USE OF THE PUBLIC THE EASEMENTS AS SHOWN HEREON, FOR THE CONSTRUCTION AND MAINTENANCE OF PUBLIC UTILITIES, AND AS PUBLIC THOROUGHFARE THE RIGHT-OF-WAY FOR MILITARY TRAIL AS SHOWN HEREON. IN WITNESS WHEREOF THE SAID CORPORATION HAS CAUSED THESE PRESENTS TO BE SIGNED BY ITS PRESENTS AND ATTESTED BY ITS SECRETARY AND THE CORPORATE SEAL AFFIXED HERETO, BY AND WITH THE AUTHORITY OF ITS BOARD OF DIRECTORS THIS 21ST DAY OF August, A.D. 1966.

ATTEST:

Dan Somers, Jr.
SECRETARY

S. I. T. CORPORATION
Albert Compo
PRESIDENT

ACKNOWLEDGEMENT:

STATE OF FLORIDA
COUNTY OF PALM BEACH SS

I HEREBY CERTIFY THAT ON THIS DAY PERSONALLY APPEARED BEFORE ME, AN OFFICER DULY AUTHORIZED TO ADMINISTER OATHS AND TAKE ACKNOWLEDGEMENTS, ALBERT COMPO AND DAN SOMERS, JR., PRESIDENT AND SECRETARY RESPECTIVELY OF S. I. T. CORPORATION, TO ME WELL KNOWN TO BE THE INDIVIDUALS DESCRIBED IN AND WHO EXECUTED THE FOREGOING DEDICATION AND THEY ACKNOWLEDGED BEFORE ME THAT THEY EXECUTED THE SAME AS SUCH OFFICERS OF SAID CORPORATION FOR THE PURPOSE THEREIN EXPRESSED AND THAT THEIR ACTS AND DEEDS HEREIN ARE THE ACTS AND DEEDS OF SAID CORPORATION.

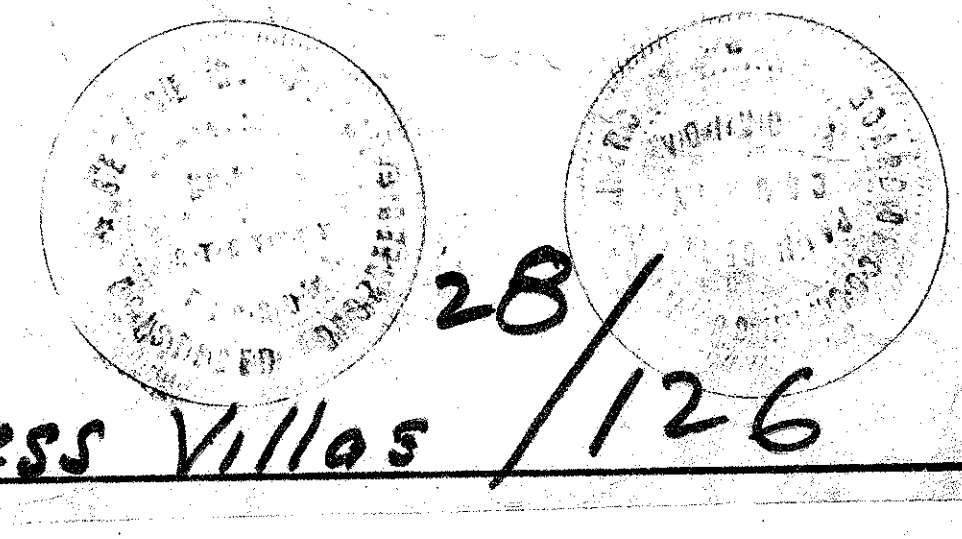
WITNESS MY HAND AND OFFICIAL SEAL IN THE COUNTY AND STATE AFORESAID THIS 21ST DAY OF August, A.D. 1966.
MY COMMISSION EXPIRES December 8, 1967

Thomas K. ...
NOTARY PUBLIC

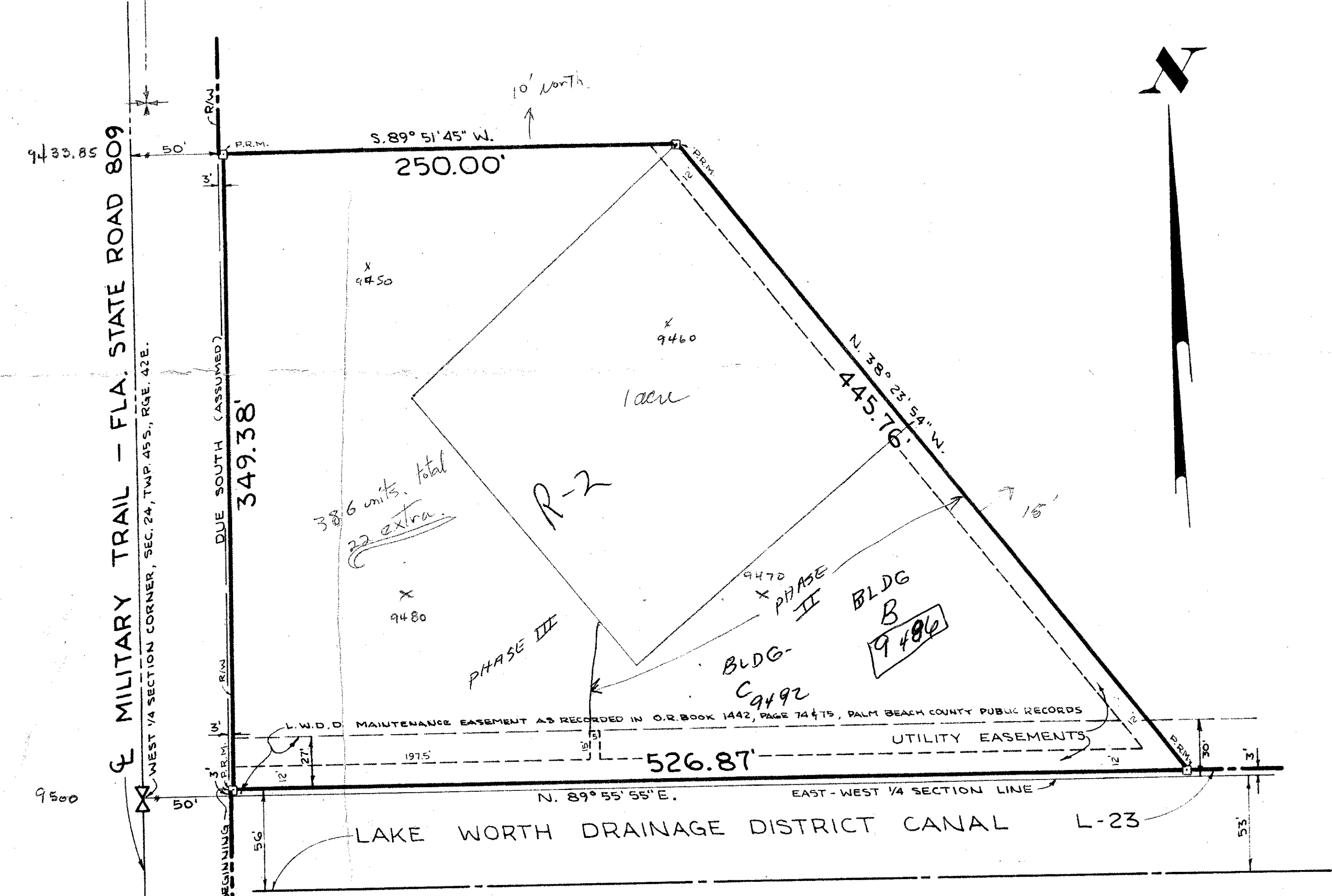
1000-235

COUNTY APPROVAL:

PALM BEACH COUNTY
APPROVED OCT. 25 1966, A. D.
BOARD OF COUNTY COMMISSIONERS
BY: *George V. Warren*
CHAIRMAN
BY: *...*
COUNTY ENGINEER



Cypress Villas / 126



NOTE:
PLAT NO. 2, MILITARY CITY ABANDONED BY RESOLUTION DATED MARCH 9, 1964, RECORDED IN OFFICIAL RECORD BOOK 993 ON PAGE 444, PUBLIC RECORDS OF PALM BEACH COUNTY, FLA..
THERE SHALL BE NO BUILDINGS OR OTHER STRUCTURE PLACED ON UTILITY EASEMENTS.

CERTIFICATE:

STATE OF FLORIDA
COUNTY OF PALM BEACH SS
I HEREBY CERTIFY THAT THE PLAT SHOWN HEREON IS A TRUE AND CORRECT REPRESENTATION OF A SURVEY MADE UNDER MY DIRECTION AND THAT SAID SURVEY IS ACCURATE TO THE BEST OF MY KNOWLEDGE AND BELIEF AND PERMANENT REFERENCE MONUMENTS (P.R.M.) HAVE BEEN SET AS REQUIRED BY LAW.

Daniel O'Brien
REGISTERED LAND SURVEYOR
P.L.M. 1000-235

DRAWING NUMBER
28-126

DRAWING NUMBER

DRAWING NUMBER

DRAWING NUMBER

