

CRESTHAVEN OF PALM BEACH

IN SECTIONS 13 & 14, TOWNSHIP 44 South, RANGE 42 East
PALM BEACH COUNTY, FLORIDA

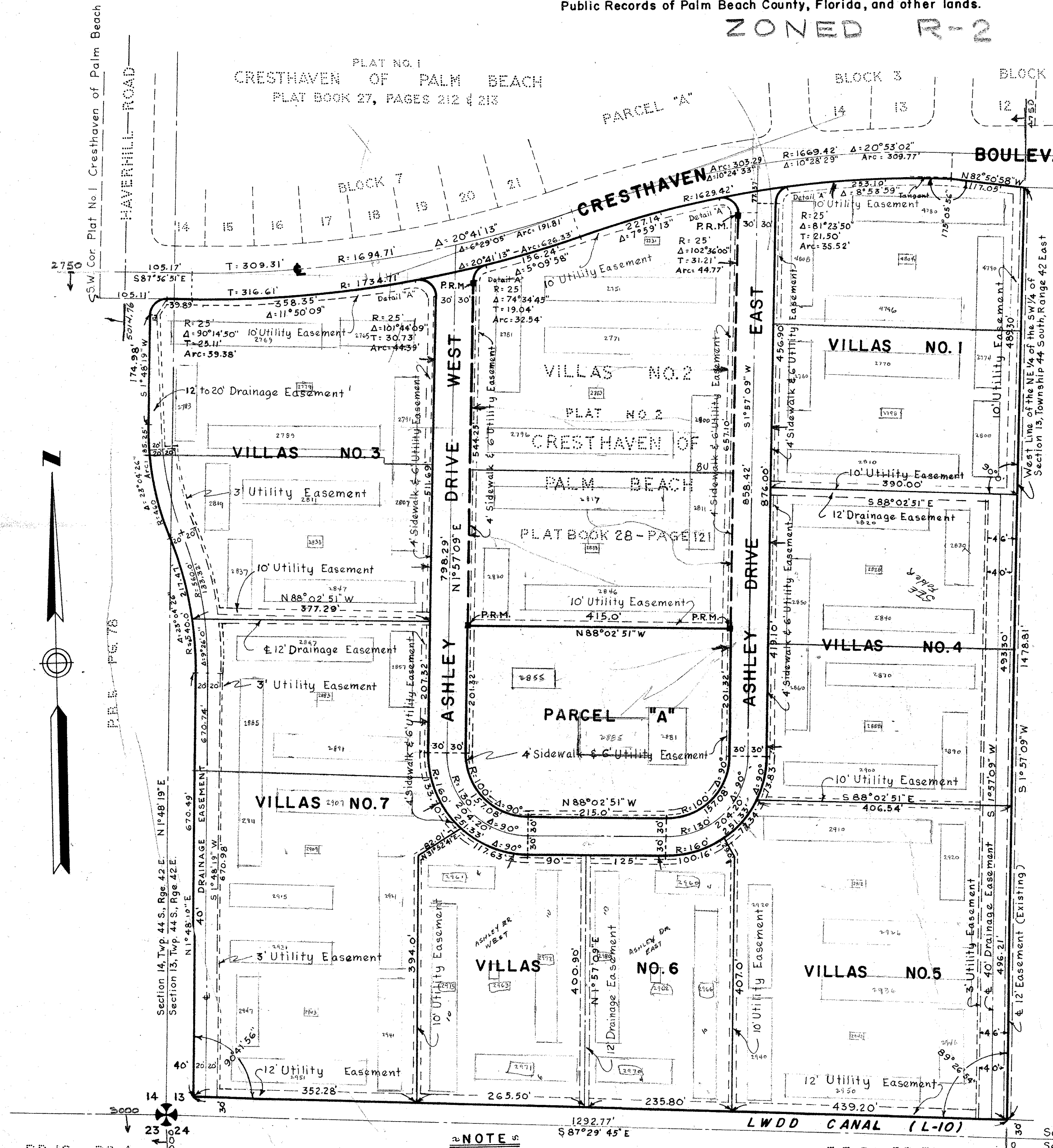
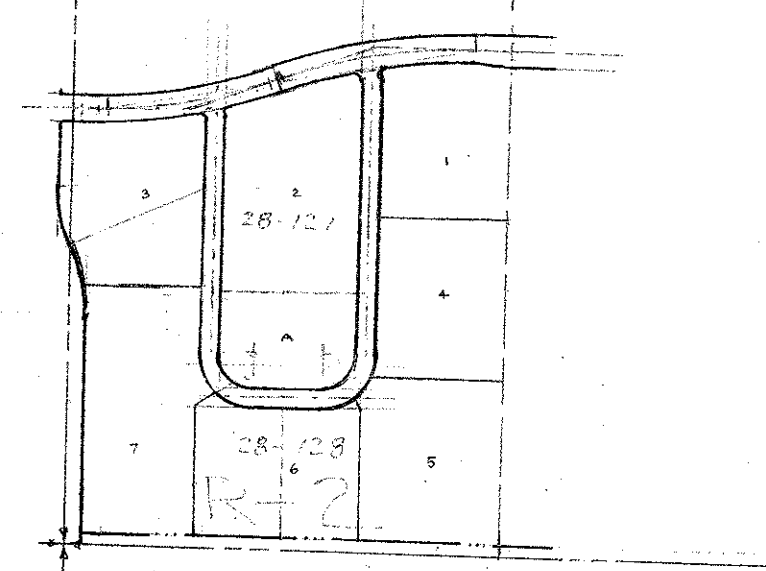
Being a Replat of Part of Plat No. 2 "CRESTHAVEN OF PALM BEACH", Section 13 & 14 Twp. 44 S., Rge. 42 E., as recorded in Plat Book 28, Pages 120 & 121 Public Records of Palm Beach County, Florida, and other lands.

ZONED R-2

DRAWING NUMBER
28-128
PLAN-HOLD CORPORATION - IRVINE, CALIFORNIA
REGISTERED BY NUMBER 0208
RECORDS BY NUMBER 0208
SECTION 13 OF PART 28, PLAT NO. 2



STATE OF FLORIDA
COUNTY OF PALM BEACH
This Plat was filed for record at 1:24 P.M.
this 28th day of Nov.
1966 and duly recorded in Plat Book No.
28 on page 128.
JOHN B. DUNKLE, Clerk Circuit Court
By *Betha M. Wilson* D. C.



STATE OF FLORIDA
COUNTY OF PALM BEACH

KNOW ALL MEN BY THESE PRESENTS, that HOMES BY ABBOTT, INC., Owners of Villas Sites 1, 3, 4, 5, 6, and 7, (Parcel "B") and Retirement Builders, Inc., Owners of Parcel "A", which are Florida Corporations, the Owners of the tracts of land lying and being in Section 13 and 14, Township 44 South, Range 42 East, Palm Beach County, Florida, shown hereon as Plat No. 3, CRESTHAVEN OF PALM BEACH, and are particularly described as follows to wit:

PARCEL "B": Plat No. 2, CRESTHAVEN OF PALM BEACH, and Parcel "A", Plat No. 2, CRESTHAVEN OF PALM BEACH, as recorded in Plat Book 28, Pages 120 and 121, Public Records of Palm Beach County, Florida.

has caused the same to be surveyed and platted as shown hereon, and does hereby dedicate to the perpetual use of the Public, as public highways, the streets shown hereon, and the use of the easements for the construction and maintenance of Public Utilities, and/or drainage purposes.

IN WITNESS WHEREOF, they have set their hands and seals this 11th day of November, A.D. 1966.

HOMES BY ABBOTT INC.
OWNERS OF PARCEL "B"
RETIREMENT BUILDERS, INC.
OWNERS OF PARCEL "A"
WITNESS *Susan A. Serrano* By *Dana Janna* President
WITNESS *Robert E. Dewey* By *Albert J. Yorra* Secretary
WITNESS *Susan A. Serrano* By *Dana Janna* President
WITNESS *Robert E. Dewey* By *Albert J. Yorra* Secretary

STATE OF FLORIDA
COUNTY OF PALM BEACH

I HEREBY CERTIFY, that on this day personally appeared before me, an officer duly authorized to administer oaths and take acknowledgements, DAVID YORRA and ALBERT YORRA, President and Secretary, respectively, of HOMES BY ABBOTT, INC., and RETIREMENT BUILDERS, INC., to me well known and known to me to be the individuals described in and who executed the foregoing dedication, and they acknowledge before me that they executed the same as such officers of said Corporation, by and with the authority of its Board of Directors for the purposes therein expressed.

WITNESS my hand and official seal at West Palm Beach, County of Palm Beach, State of Florida, this 11th day of November, A.D. 1966.

My Commission Expires: May 12, 1970
Notary Public *J. V. Howard*

STATE OF FLORIDA
COUNTY OF PALM BEACH

I HEREBY CERTIFY, that the plat shown hereon is a true and correct representation of a survey, made under my direction, of the foregoing described property, and that said survey is accurate to the best of my knowledge and belief, and that permanent reference monuments (P.R.M.) have been placed as required by law.

David O. Barclay
Registered Land Surveyor
Florida Certificate No. 831

APPROVED: November 15th, A.D. 1966.
Board of County Commissioners

BY: *George G. Warren* Chairman
BY: *[Signature]* County Engineer

0231-303

BROCKWAY, OWEN & ANDERSON
ENGINEERS, INCORPORATED
WEST PALM BEACH, FLORIDA

PLAT NO. 3
CRESTHAVEN OF PALM BEACH

FIELD: J. K. A.	SCALE: 1" = 100'	Job No. 66-752
OFFICE: G. R. B.		
DR. BY: L. N. D.	DATE: NOV. 1966	Dwg. No. 28/128
FIELD BK. C-87 Pg. 67		

NOTE
Building Setback Lines shall be as required by Palm Beach County Zoning Regulations.
There shall be no buildings or other structures placed on Utility Easements.
There shall be no buildings or any kind of construction or trees or shrubs placed on Drainage Easements.
All Block Corners are rounded with a 25 ft. radius curve, unless otherwise shown.
Easements are for Public Utilities, unless otherwise noted.
P.B. 5 - PG. 76

