

DRAWING NUMBER
28-190

DRAWING NUMBER

DRAWING NUMBER

DRAWING NUMBER

061/82

061/82

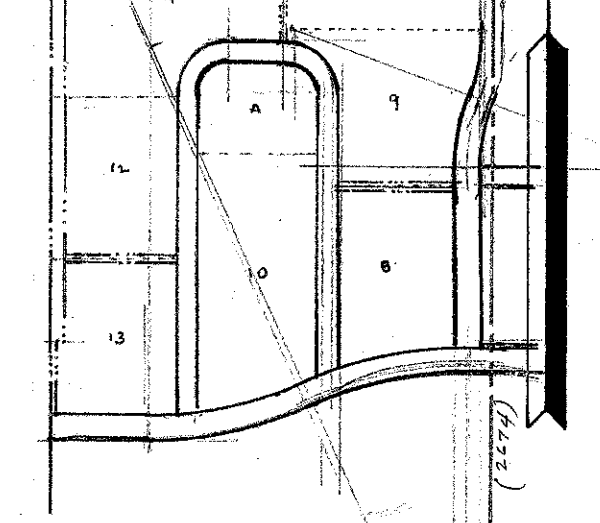
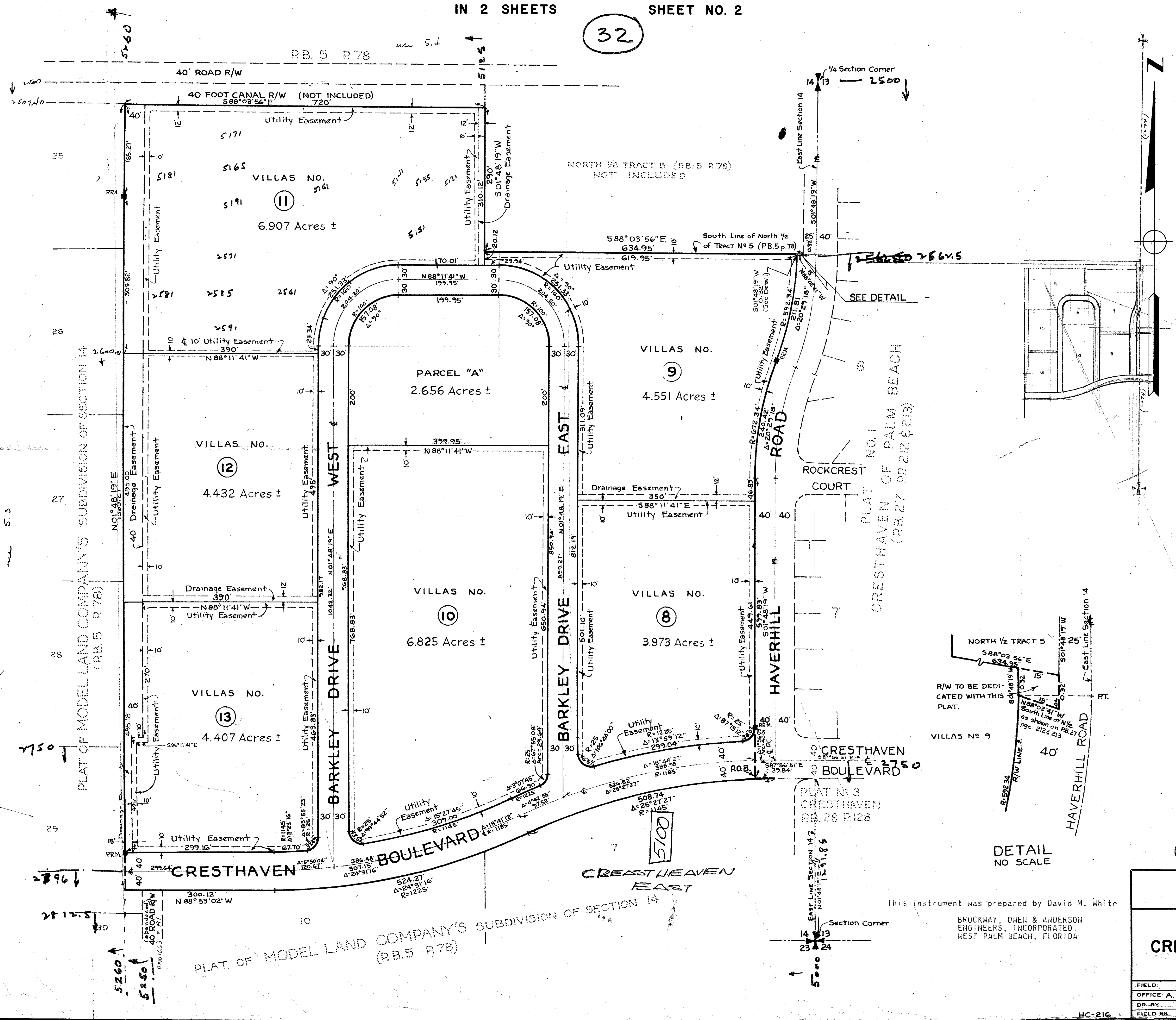
PLAT NO. 4 CRESTHAVEN OF PALM BEACH

IN SECTION 14, TWP 44 S., RGE. 42 E.
PALM BEACH COUNTY, FLORIDA
IN 2 SHEETS SHEET NO. 2

32

190
28/190

STATE OF FLORIDA
COUNTY OF PALM BEACH
This Plat was filed for record at _____ M.
this _____ day of _____
19____ and duly recorded in Plat Book No. _____
on page _____
JOHN B. DUNKLE, Clerk Circuit Court
By _____ D. C.



- NOTE
1. Building Setback Lines shall be as required by Palm Beach County Zoning Regulations.
 2. There shall be no buildings or any kind of construction or trees or shrubs placed on Drainage Easements.
 3. There shall be no buildings or other structures placed on Utility Easements.
 4. Block Corners are rounded with a 25 ft. radius curve, unless otherwise shown.
 5. Easements are for Public Utilities, unless otherwise noted.
 6. PRM Denotes permanent reference monuments.

0231-304

BROCKWAY, OWEN & ANDERSON
ENGINEERS, INCORPORATED
WEST PALM BEACH, FLORIDA

PLAT NO. 4
CRESTHAVEN OF PALM BEACH
IN 2 SHEETS SHEET NO. 228

FIELD: A. T. GLOER	SCALE: 1" = 100'	Job No. 68-256/190
OFFICE: A. S. TERRADAS		
DR. BY: D. M. WHITE	DATE: JUNE 1968	Dwg. No.
FIELD BK. C99/42		

HC-216

This instrument was prepared by David M. White

BROCKWAY, OWEN & ANDERSON
ENGINEERS, INCORPORATED
WEST PALM BEACH, FLORIDA