

# PLAT OF ARROWHEAD ESTATES

A SUBDIVISION OF PART OF THE NORTH HALF OF THE NORTHEAST QUARTER OF  
SECTION 33, TOWNSHIP 43 SOUTH, RANGE 37 EAST,  
BELLE GLADE, PALM BEACH COUNTY, FLORIDA  
MOCK, ROOS & SEARCY, INC., Consulting Engineers, WEST PALM BEACH, FLORIDA

203

COUNTY OF PALM BEACH  
STATE OF FLORIDA  
This Plat was filed for record at 2:38  
on the 11th day of SEPTEMBER  
1969, and duly recorded in Plat Book No.  
28 on page 249.  
JOHN B. DUNKLE, Clerk Circuit Court  
Margaret A. Newman, etc.

STATE OF FLORIDA  
COUNTY OF PALM BEACH SS

KNOW ALL MEN BY THESE PRESENTS THAT ARROWHEAD ESTATES, INCORPORATED, A FLORIDA CORPORATION,  
THE OWNER OF THE TRACT OF LAND SHOWN HEREON AS "ARROWHEAD ESTATES" AND MORE PARTICULARLY DESCRIBED AS FOLLOWS:  
THE EAST 496.00 FEET OF THE WEST 519.00 FEET OF THE NORTH HALF (N 1/2) OF THE NORTHEAST QUARTER (NE 1/4) OF  
SECTION 33, TOWNSHIP 43 SOUTH, RANGE 37 EAST, PALM BEACH COUNTY, FLORIDA, LESS RIGHTS-OF-WAY OF RECORD.

HAVE CAUSED THE SAME TO BE SURVEYED AND PLATTED AS SHOWN HEREON AND DO HEREBY DEDICATE TO THE PERPETUAL USE OF THE  
PUBLIC AS PUBLIC HIGHWAYS, THE AVENUE AND STREET AS SHOWN HEREON AND THE EASEMENTS FOR THE CONSTRUCTION AND MAINTENANCE  
OF PUBLIC UTILITIES.

IN WITNESS WHEREOF THE SAID CORPORATION HAS CAUSED THESE PRESENTS TO BE SIGNED BY ITS PRESIDENT  
AND ATTESTED BY ITS SECRETARY AND ITS CORPORATE TO BE AFFIXED HERETO BY AND WITH THE AUTHORITY OF ITS  
BOARD OF DIRECTORS, THIS 18th DAY OF JULY, A. D. 1969.

ARROWHEAD ESTATES, INCORPORATED  
BY: R.M. Hooker  
PRESIDENT

ATTEST: R.E. Mathews  
SECRETARY

STATE OF FLORIDA  
COUNTY OF PALM BEACH SS

I HEREBY CERTIFY THAT ON THIS DAY PERSONALLY APPEARED BEFORE, AN OFFICER DULY AUTHORIZED  
TO ADMINISTER OATHS AND TAKE ACKNOWLEDGMENTS, R.M. HOOKER AND R.E. MATHEWS, PRESIDENT  
AND SECRETARY RESPECTIVELY, OF ARROWHEAD ESTATES, INCORPORATED, A FLORIDA CORPORATION, TO ME WELL  
KNOWN AND KNOWN TO ME TO BE THE INDIVIDUALS DESCRIBED IN, AND WHO EXECUTED THE FOREGOING DEDICATION,  
AND THEY ACKNOWLEDGED BEFORE ME THAT THEY EXECUTED THE SAME AS SUCH OFFICERS OF SAID CORPORATION BY  
AND WITH THE AUTHORITY OF ITS BOARD OF DIRECTORS.

WITNESS MY HAND AND OFFICIAL SEAL AT Belle Glade, COUNTY OF PALM BEACH AND STATE  
OF FLORIDA THIS 18th DAY OF JULY, A. D. 1969.

MY COMMISSION EXPIRES September 20, 1971

Ray C. Mann  
NOTARY PUBLIC

STATE OF FLORIDA  
COUNTY OF PALM BEACH SS

I HEREBY CERTIFY THAT THE PLAT SHOWN HEREON IS A TRUE AND CORRECT REPRESENTATION  
OF A SURVEY MADE UNDER MY DIRECTION, OF THE HEREON DESCRIBED PROPERTY, AND THAT SAID SURVEY  
IS ACCURATE TO THE BEST OF MY KNOWLEDGE AND BELIEF, AND THAT PERMANENT REFERENCE MONUMENTS  
(P.R.M.) HAVE BEEN PLACED AS REQUIRED BY LAW.

SUBSCRIBED AND SWORN TO BEFORE ME THIS 12th DAY OF JUNE, A. D. 1969.

MY COMMISSION EXPIRES December 26, 1972

Fellic B. Allison  
NOTARY PUBLIC

APPROVED: SEPTEMBER 9th A. D. 1969  
BOARD OF COUNTY COMMISSIONERS  
PALM BEACH COUNTY, FLORIDA

BY: Ed Hyman  
CHAIRMAN

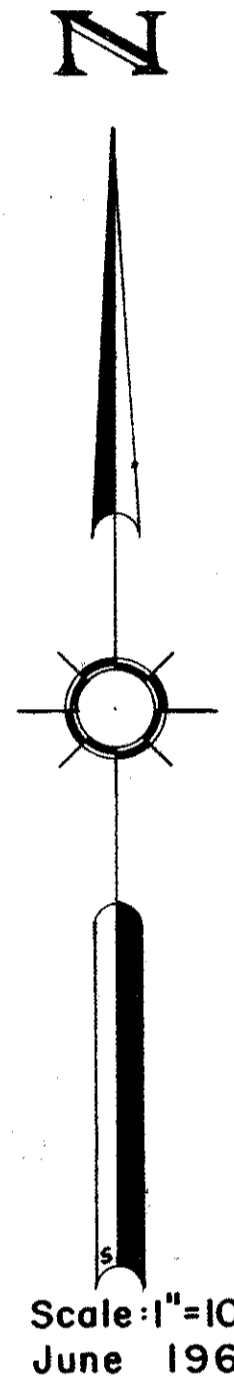
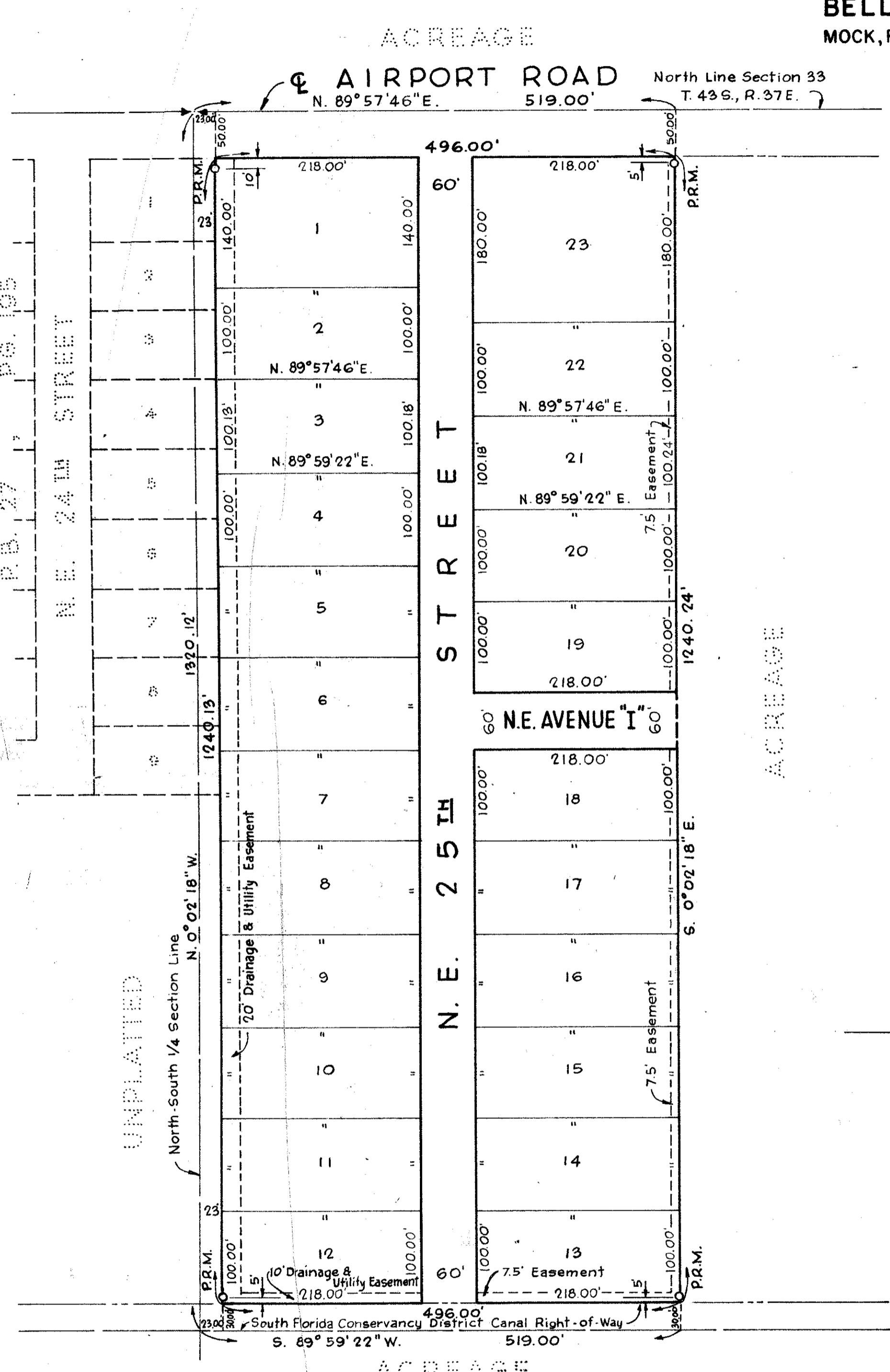
BY: Wood Hill  
COUNTY ENGINEER

This instrument was prepared by: RICHARD S. WHEELIHAN  
Vice President  
MOCK, ROOS & SEARCY, INCORPORATED  
Consulting Engineers  
2930 Okeechobee Boulevard  
West Palm Beach, Florida

1000-261

28/

ARROWHEAD ESTATES 249



NOTES:  
EASEMENTS ARE FOR PUBLIC UTILITIES UNLESS OTHERWISE SHOWN.  
BUILDING SETBACK SHALL BE AS REQUIRED BY CITY OF BELLE GLADE ORDINANCES.  
THERE SHALL BE NO BUILDINGS OR ANY KIND OF CONSTRUCTION OR TREES OR SHRUBS PLACED ON DRAINAGE EASEMENTS.  
THERE SHALL BE NO BUILDINGS OR OTHER STRUCTURES PLACED ON UTILITY EASEMENTS.

APPROVED: August 12 A. D. 1969  
CITY OF BELLE GLADE

BY: Aubrey Farmer  
MAYOR

BY: Donald A. Jones  
CITY CLERK

DRAWING NUMBER 28-249  
PLAN-HOLD CORPORATION - IRVINE, CALIFORNIA  
REGISTERED BY NUMBER 02048  
POSITION: CLERK OF THE COURT  
DRAWING NUMBER  
PLAN-HOLD CORPORATION - IRVINE, CALIFORNIA  
REGISTERED BY NUMBER 02048  
POSITION: CLERK OF THE COURT  
DRAWING NUMBER  
PLAN-HOLD CORPORATION - IRVINE, CALIFORNIA  
REGISTERED BY NUMBER 02048  
POSITION: CLERK OF THE COURT