

DRAWING NUMBER  
**29-24**

29/24

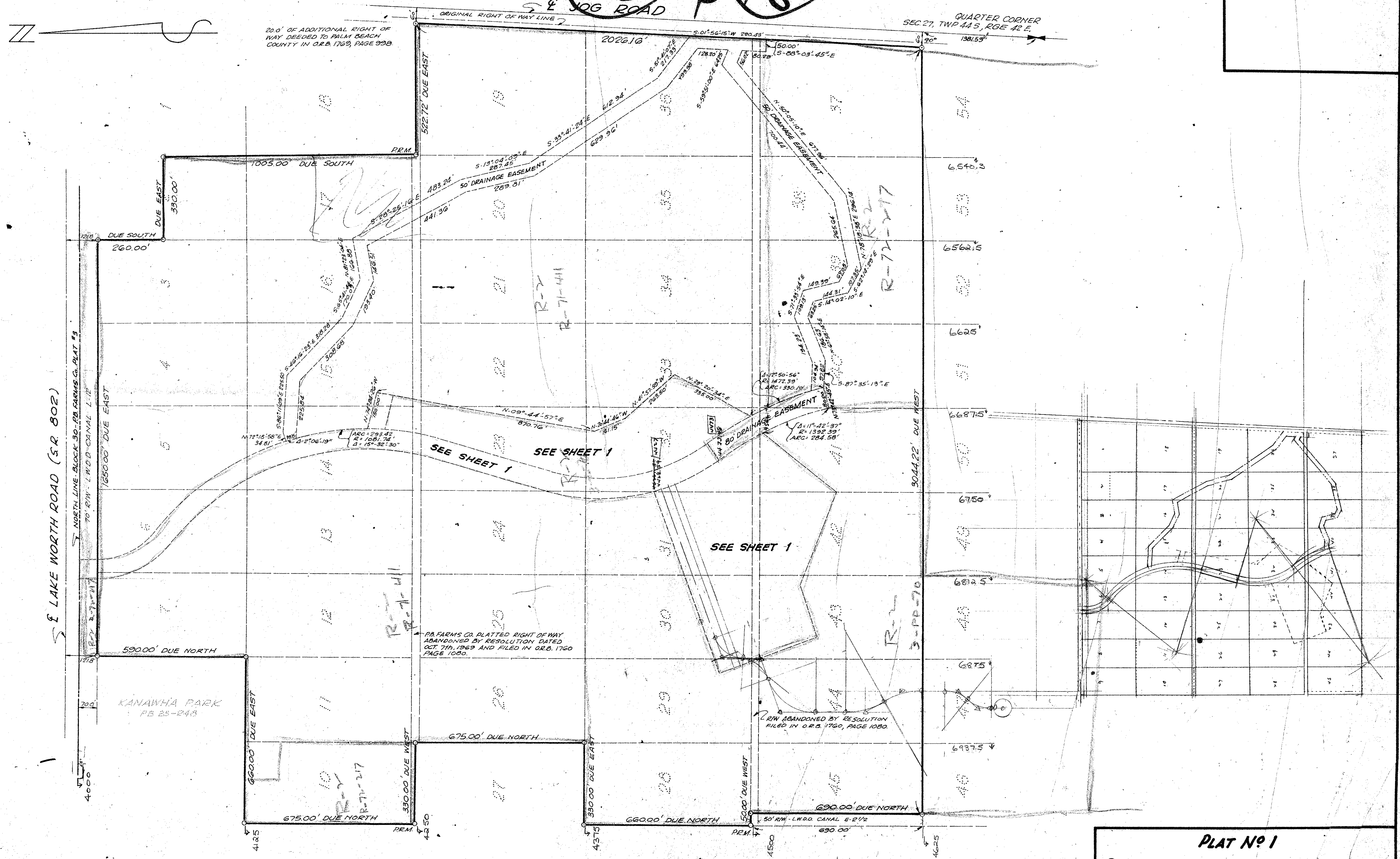
PLAT No 1

# Palm Beach Golf Club Estates

A REPLAT OF A PORTION OF BLOCK 30, PALM BEACH FARMS COMPANY PLAT No 3, AS RECORDED IN PLAT BOOK 2, PAGE 48 PUBLIC RECORDS OF PALM BEACH COUNTY, FLORIDA.

**33** **48**

2429  
24



DRAWING NUMBER

DRAWING NUMBER

DRAWING NUMBER

29/24

SEE SHEET 1 FOR LEGAL DESCRIPTION

THIS INSTRUMENT WAS PREPARED BY L. STARKEY IN THE OFFICE OF ADAIR & BRADY, INC., ENGINEERS & LAND SURVEYORS, LAKE WORTH, FLA.

PLAT No 1  
**PALM BEACH GOLF CLUB ESTATES**  
 IN 2 SHEETS SHEET 2  
**ADAIR & BRADY, INC.**  
 ENGINEERS & LAND SURVEYORS  
 Lake Worth, Florida

DR. L.S.	SCALE: 1" = 200'
CHKD. H.D.K.	DATE: 12-1-69
F.B. P.B.G.C.F.	JOB No. 691115

**FP-733**