

DRAWING NUMBER
29-44

COVERED BRIDGE

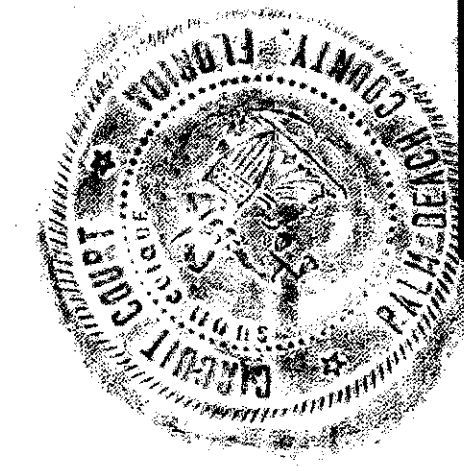
PLAT ONE

IN SECTION 21, TOWNSHIP 44 SOUTH, RANGE 42 EAST,
PALM BEACH COUNTY, FLORIDA

BEING A REPLAT OF A PORTION OF TRACT 72, BLOCK 23,
PALM BEACH FARMS COMPANY, PLAT NUMBER 3, AS RECORDED
IN PLAT BOOK 2, PAGE 47, PUBLIC RECORDS OF PALM
BEACH COUNTY, FLORIDA.

48

COUNTY OF PALM BEACH
STATE OF FLORIDA
This Plat was filed for record at 8:38 a.m.
this 29th day of June
1970, and duly recorded in Plat Book No.
29 on page 44.
JOHN B. DUNKLE, Clerk Circuit Court
Margaret S. Newton, D.C.



TRACT 57
P.B. FARMS CO. PLAT 3
PB. 2, PG. 4-7

PALM BEACH NATIONAL GOLF
AND COUNTRY CLUB ESTATES
PLAT NO. 2
PB. 27, PG. 15-4

3-11-70
700800

DEDICATION

STATE OF FLORIDA
COUNTY OF PALM BEACH

KNOW ALL MEN BY THESE PRESENTS THAT HOVNANIAN OF FLORIDA, INC. A FLORIDA CORPORATION, THE OWNER OF THE TRACT OF LAND SHOWN HEREON AS "COVERED BRIDGE", PLAT ONE, AND MORE PARTICULARLY DESCRIBED AS FOLLOWS:

THE NORTH 331.00 FEET OF THE EAST 280.00 FEET
OF THE WEST 315.00 FEET OF TRACT 72, BLOCK 23 PALM BEACH FARMS COMPANY
PLAT NUMBER 3, AS RECORDED IN PLAT BOOK 2, PAGE 47, PUBLIC RECORDS OF
PALM BEACH COUNTY, FLORIDA,

HAVE CAUSED THE SAME TO BE SURVEYED AND PLATTED AS SHOWN HEREON, AND DO HEREBY DEDICATE TO THE LAKE WORTH DRAINAGE DISTRICT FOR DRAINAGE PURPOSES, THE NORTHEASTLY 51.00 FEET THEREOF.

IN WITNESS WHEREOF THE SAID CORPORATION HAS CAUSED THESE PRESENTS TO BE SIGNED BY ITS PRESIDENT AND ATTESTED BY ITS VICE-PRESIDENT, AND THE CORPORATE SEAL AFFIXED HERETO BY AND WITH THE AUTHORITY OF ITS BOARD OF DIRECTORS THIS 25TH DAY OF MAY, 1970 A.D.

ATTEST:
John Largey
VICE-PRESIDENT

HOVNANIAN OF FLORIDA, INC.
[Signature]
PRESIDENT
CORPORATION

ACKNOWLEDGEMENT

STATE OF FLORIDA
COUNTY OF PALM BEACH

I HEREBY CERTIFY THAT ON THIS DAY PERSONALLY APPEARED BEFORE ME, AN OFFICER DULY AUTHORIZED TO ADMINISTER OATHS AND TAKE ACKNOWLEDGEMENTS, K.S. HOVNANIAN AND JOHN LARGEY, PRESIDENT AND VICE-PRESIDENT, RESPECTIVELY, OF HOVNANIAN OF FLORIDA, INC. TO ME WELL KNOWN AND KNOWN TO ME TO BE THE INDIVIDUALS DESCRIBED IN AND WHO EXECUTED THE FOREGOING DEDICATION, AND THEY ACKNOWLEDGED BEFORE ME THAT THEY EXECUTED THE SAME AS SUCH OFFICERS OF SAID CORPORATION BY AND WITH THE AUTHORITY OF THE BOARD OF DIRECTORS OF SAID CORPORATION FOR THE PURPOSES HEREIN EXPRESSED, AND THAT THEIR ACT AND DEED WAS THE ACT AND DEED OF SAID CORPORATION.

WITNESS MY HAND AND OFFICIAL SEAL AT LAKE WORTH, COUNTY OF PALM BEACH, STATE OF FLORIDA, THIS 25TH DAY OF MAY, 1970 A.D.

MY COMMISSION EXPIRES May 31, 1972

Barbara Stanton
NOTARY PUBLIC

CERTIFICATE

STATE OF FLORIDA
COUNTY OF PALM BEACH

I HEREBY CERTIFY THAT THE PLAT SHOWN HEREON IS A TRUE AND CORRECT REPRESENTATION OF A SURVEY OF THE PROPERTY DESCRIBED IN THE CAPTION THEREOF, MADE UNDER MY DIRECTION, AND IS ACCURATE TO THE BEST OF MY KNOWLEDGE AND BELIEF, AND PERMANENT REFERENCE MONUMENTS (P.R.M.) HAVE BEEN SET AS REQUIRED BY LAW.

SUBSCRIBED AND SWORN TO ME THIS 25TH DAY OF MAY, 1970 A.D.

John Adair, Jr.
REGISTERED LAND SURVEYOR, FLA. CERT. NO. 15523
SURVEYOR

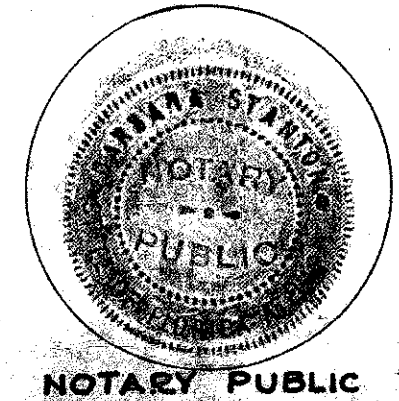
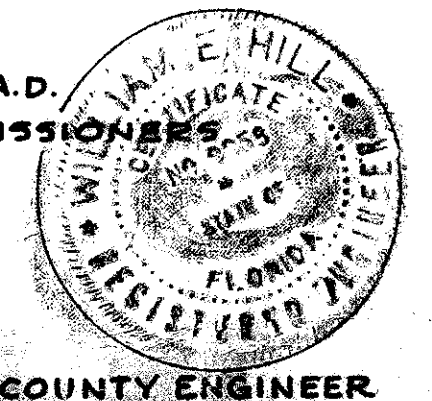
MY COMMISSION EXPIRES May 31, 1972
Barbara Stanton
NOTARY PUBLIC

APPROVAL

APPROVED: JUNE 2 1970 A.D.
BOARD OF COUNTY COMMISSIONERS

BY: *C. W. Weaver*
CHAIRMAN

BY: *Walter Hill*
COUNTY ENGINEER

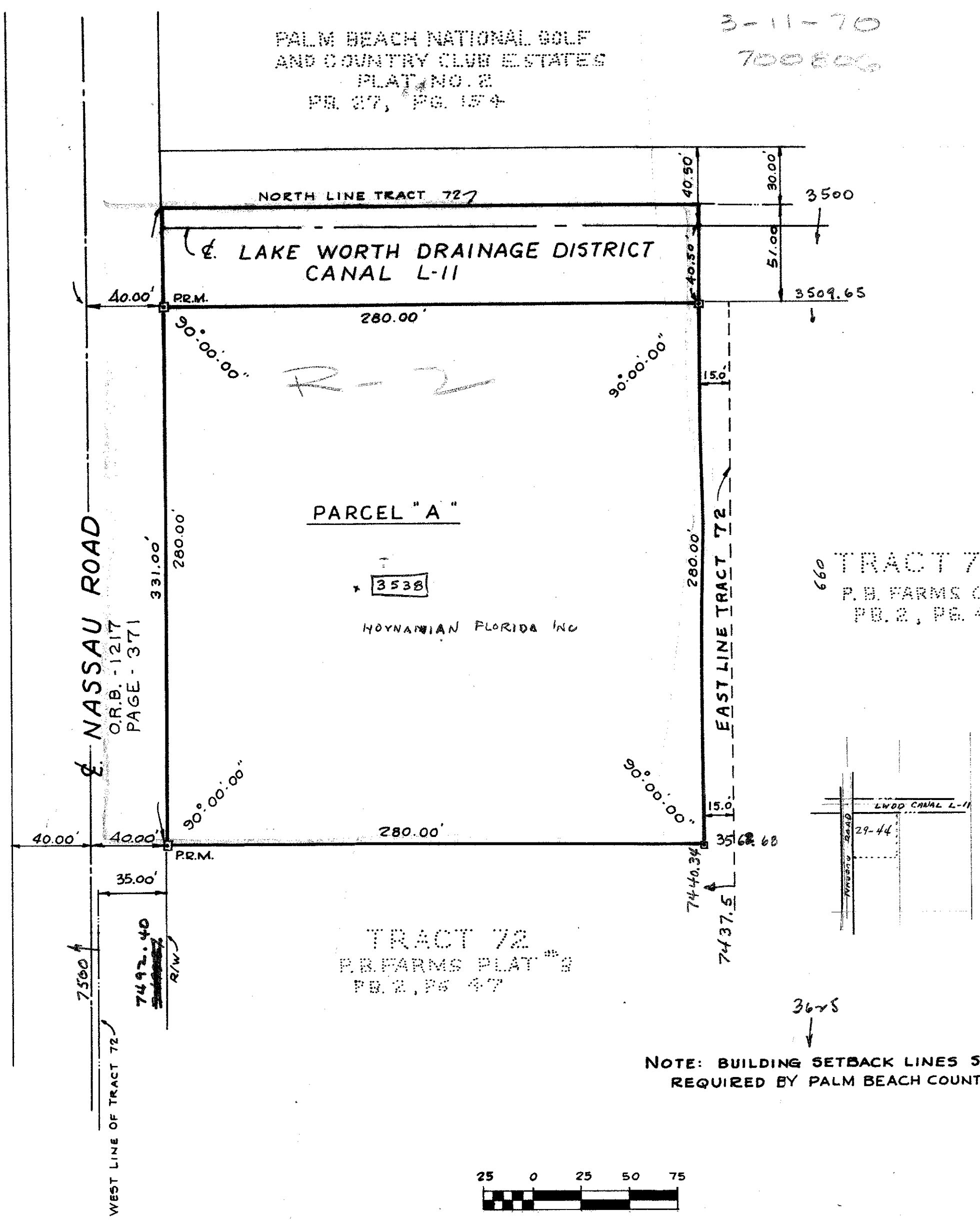


COVERED BRIDGE PLAT ONE

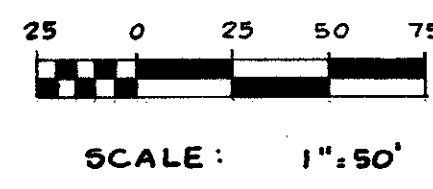
ADAIR & BRADY, INC.
ENGINEERS & LAND SURVEYORS
LAKE WORTH, FLORIDA

DRAWN	RB/LS	SCALE	1" = 50'
CHECKED	L.S.	DATE	MAY 25, 1970
F.B.		JOB NO.	70/116

FP 769



NOTE: BUILDING SETBACK LINES SHALL BE AS
REQUIRED BY PALM BEACH COUNTY ZONING REGULATIONS.



COVERED BRIDGE

THIS INSTRUMENT PREPARED BY:
ROBERT A. TURSO
ADAIR AND BRADY, INC.
ENGINEERS & LAND SURVEYORS
LAKE WORTH, FLORIDA.

DRAWING NUMBER

DRAWING NUMBER

DRAWING NUMBER