

DRAWING NUMBER
29-47

DRAWING NUMBER

DRAWING NUMBER

DRAWING NUMBER

L7/62

47
29/47

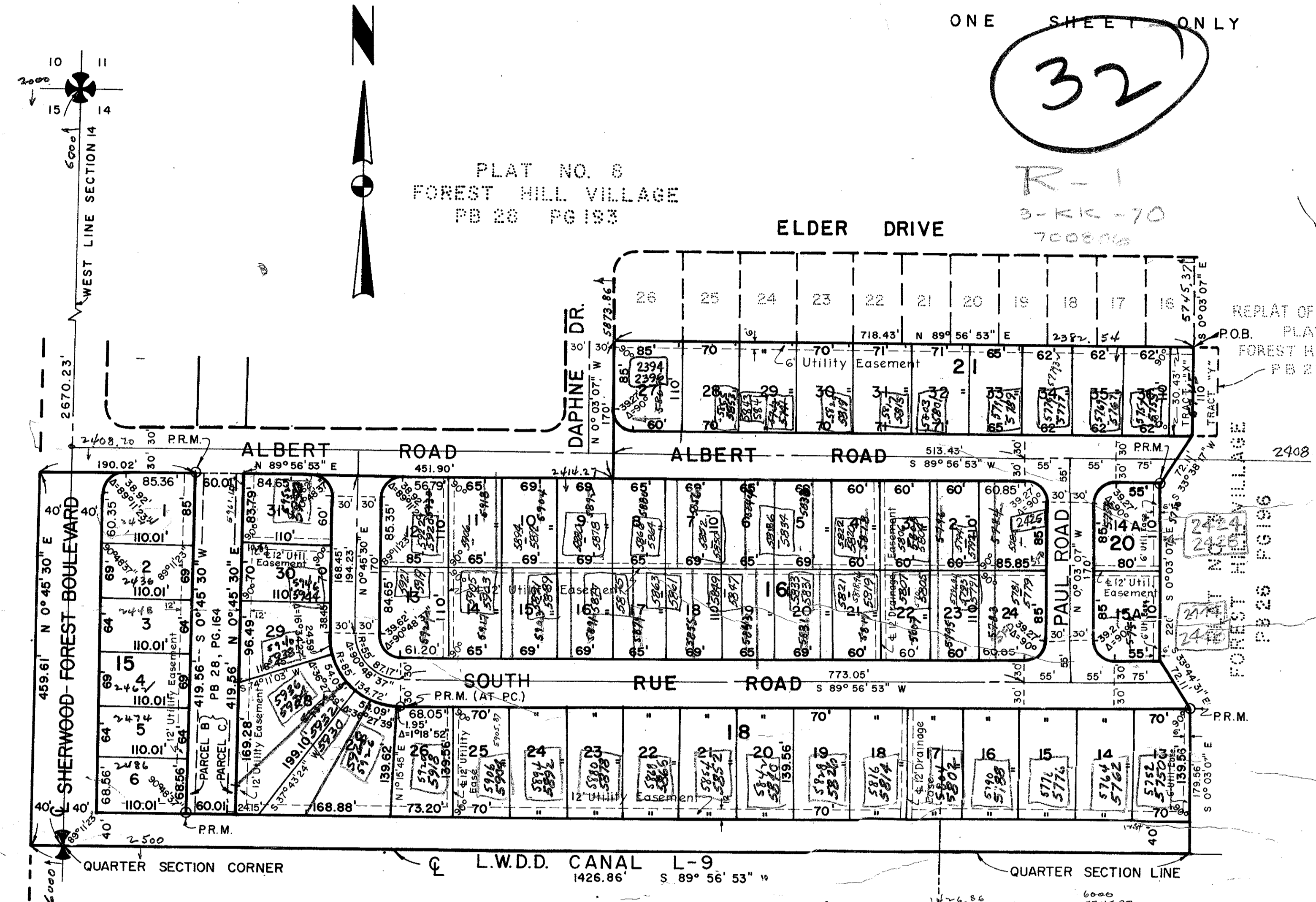
PLAT NO. 11 FOREST HILL VILLAGE

IN SECTIONS 14 & 15, TWP 44 S., RGE. 42 E.
PALM BEACH COUNTY, FLORIDA

BEING A REPLAT OF PORTIONS OF TRACTS 41, 42, 52 AND 61, MODEL LAND COMPANY SUBDIVISION OF SECTION 14, TOWNSHIP 44 SOUTH, RANGE 42 EAST, AS RECORDED IN PLAT BOOK 5, PAGE 78, PUBLIC RECORDS OF PALM BEACH COUNTY, FLORIDA.

ONE SHEET ONLY

32



PLAT NO. 8
FOREST HILL VILLAGE
PB 26 PG 193

STATE OF FLORIDA
COUNTY OF PALM BEACH

KNOW ALL MEN BY THESE PRESENTS, that FOREST HILL VILLAGE, INC. a Florida Corporation, the owners of the tract of land lying and being in Sections 14 & 15, Township 44 South, Range 42 East, Palm Beach County, Florida, shown hereon as PLAT NO. 11, FOREST HILL VILLAGE, and more particularly described as follows, to wit:

REPLAT OF BLOCKS 21 & 22, Forest Hill Village, Inc. a Florida Corporation, the owners of the tract of land lying and being in Sections 14 & 15, Township 44 South, Range 42 East, Palm Beach County, Florida, shown hereon as PLAT NO. 11, FOREST HILL VILLAGE, and more particularly described as follows, to wit:

has caused the same to be surveyed and platted as shown hereon and does hereby dedicate to the perpetual use of the public as public highways and waterways, the streets and canals shown hereon, and the use of the Easements for the construction and maintenance of public utilities and/or drainage purposes.

IN WITNESS WHEREOF, the said Corporation has caused these presents to be signed by its President and attested by its Secretary and its corporate seal to be affixed hereto, by and with the authority of its Board of Directors, this 24th day of October, A.D. 1969.

Attest Ruth C. Abramson Secretary By Stephen Abramson President

STATE OF FLORIDA
COUNTY OF PALM BEACH

1000-221

I HEREBY CERTIFY, that on this day personally appeared before me, an officer duly authorized to administer oaths and take acknowledgements, STEPHEN ABRAMSON, and RUTH C. ABRAMSON, President and Secretary, respectively, of FOREST HILL VILLAGE, INC., a Florida Corporation, to me well known and known to me to be the individuals described in, and who executed the foregoing dedication, and they acknowledged before me that they executed the same as such officers of said Corporation, by and with the authority of its Board of Directors for the purposes therein expressed, and that their act and deed was the act and deed of said Corporation.

WITNESS my hand and official seal at West Palm Beach, County of Palm Beach and State of Florida, this 24th day of October, A.D. 1969.

My Commission Expires JAN 11, 1971

This instrument was prepared by
Robert E. Rodgers
BROCKWAY, OWEN & ANDERSON
ENGINEERS, INCORPORATED
WEST PALM BEACH, FLORIDA

BROCKWAY, OWEN & ANDERSON
ENGINEERS, INCORPORATED
WEST PALM BEACH, FLORIDA
PLAT NO. 11
FOREST HILL VILLAGE
PALM BEACH COUNTY, FLORIDA

FIELD:	SCALE: 1" = 100'	Job No. 69-1263
OFFICE:	DATE: OCT, 1969	Dwg. No. BF-1980-M
DR. BY: R. ANDERSON		
FIELD BK:		

H.C.-35B

STATE OF FLORIDA
COUNTY OF PALM BEACH

I HEREBY CERTIFY, that the plat shown hereon is a true and correct representation of a survey, made under my direction, of the hereon described property, and that said survey is accurate to the best of my knowledge and belief, and that permanent reference monuments (P.R.M.) have been placed as required by law.

Date Nov 14, 1969 George Q. Buchanan Registered Land Surveyor Florida Certificate No. 831

Subscribed and sworn to before me this 14th day of November, A.D. 1969.

My Commission Expires Sept. 30, 1973

Approved JUNE 9 A.D. 1970
Board of County Commissioners

By George B. Warren Vice-Chairman

By Walter Hill County Engineer

NOTES:

- Building Setback Lines shall be as required by Palm Beach County Zoning Regulations.
- There shall be no building or other structures placed on Utility Easements.
- There shall be no buildings or any kind of construction, or trees or shrubs placed on Drainage Easements.
- All Block Corners are rounded with a 25 ft. radius curve, unless otherwise shown.
- Easements are for Public Utilities, unless otherwise noted.
- Tract "X" as shown hereon may be considered for building purposes only when treated as a building lot with Lot 36, Block 21 or Tract "Y", Block 21-A in the Replat of Blocks 21 and 22, Plat 3, Forest Hill Village.
- Permanent Reference Monuments shown thus: P.R.M. ϕ

2 UNIT TH

