

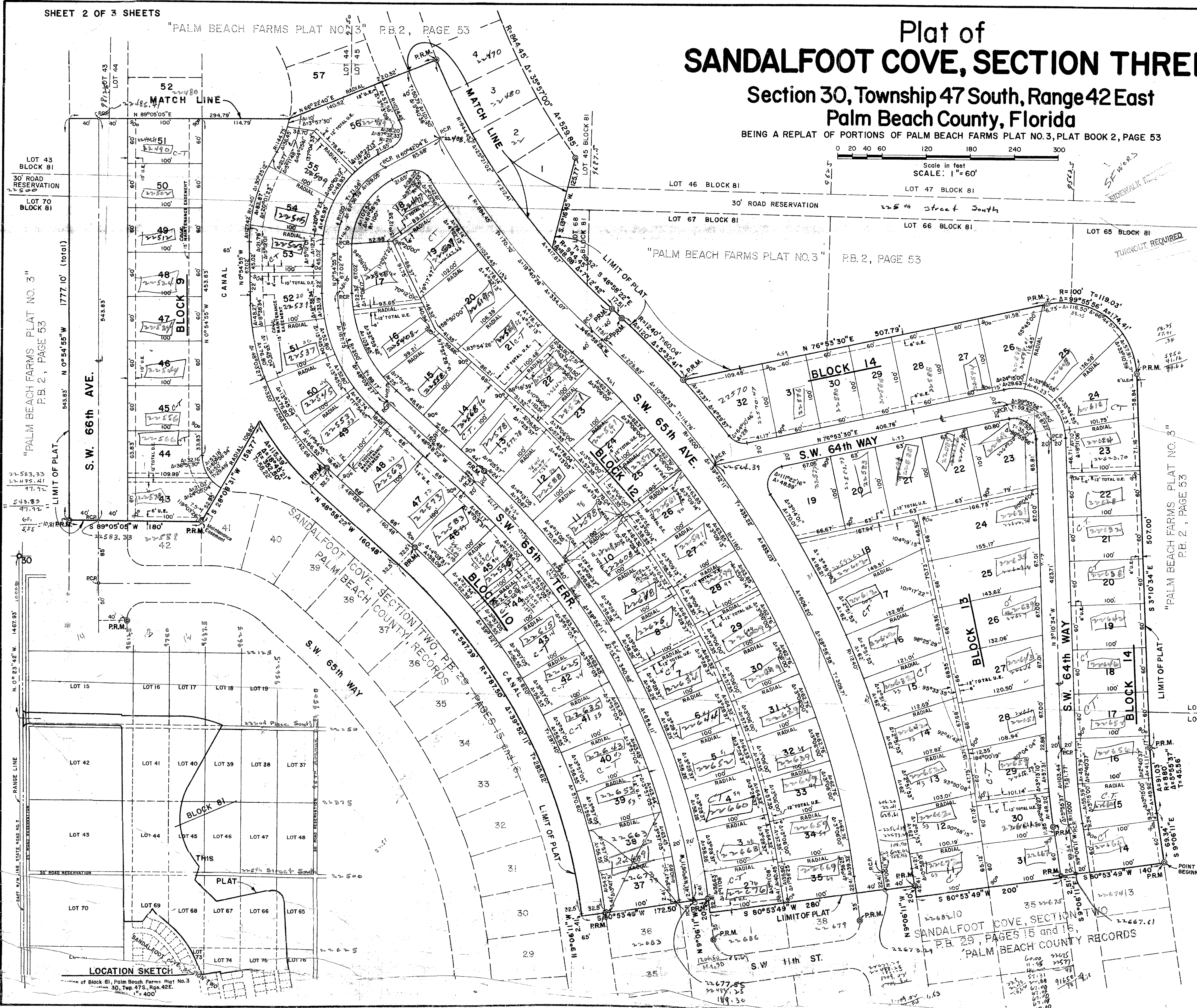
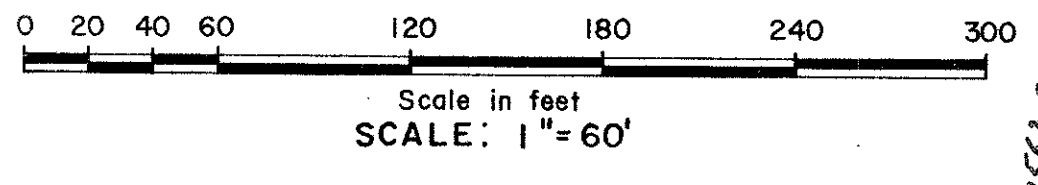
29-141

Plat of SANDALFOOT COVE, SECTION THREE

Section 30, Township 47 South, Range 42 East Palm Beach County, Florida

BEING A REPLAT OF PORTIONS OF PALM BEACH FARMS PLAT NO. 3, PLAT BOOK 2, PAGE 53

141



NOTES:

- There shall be no buildings or other structures placed on Utility Easements.
- There shall be no buildings or any kind of construction or trees or shrubs placed on Drainage Easements.
- Corner radii are 25 feet, unless shown otherwise.
- There shall be no surface appurtenances permitted on the 15 foot Maintenance Easements.
- P.R.M. indicates Permanent Reference Monument.
- 12' TOTAL D.E. indicates 12 foot Drainage Easement.
- P.C.P. indicates Permanent Control Point.
- 12' TOTAL U.E. indicates 12 foot Utility Easement.
- Bedings refer to an assumed Meridian of the Range Line, Sec. 30-47-42.

0308-307
306-322
13.41.57
103.22
13.07

Prepared by: RALPH BUCHANAN
McLaughlin Engineering Co.
400 N.E. 3rd Avenue
Fort Lauderdale
Florida
33301

29/141