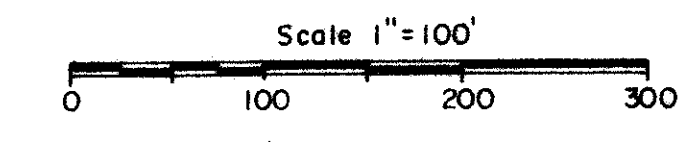


BOCA DEL MAR NO. 1

A PLAT OF A PORTION OF SEC. 26 & 27, TWP. 47S, RGE 42E.

PALM BEACH COUNTY, FLORIDA
JOHN A. GRANT JR., INC. CONSULTING ENGINEERS & LAND SURVEYOR BOCA RATON, FLORIDA

JANUARY 1972



Sheet 3 of 3



39

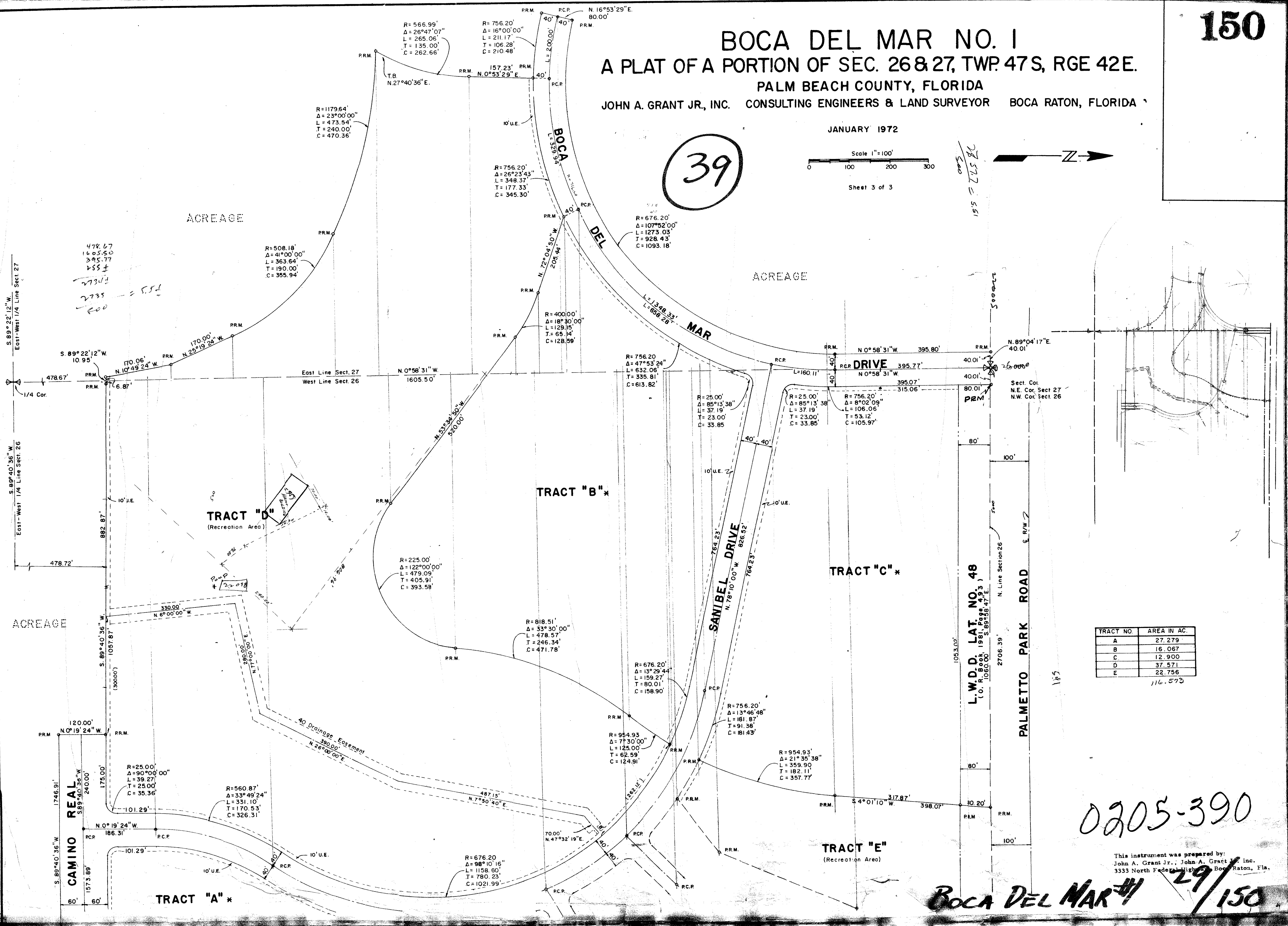
28572 = 5.51

DRAWING NUMBER
29-150

DRAWING NUMBER

DRAWING NUMBER

DRAWING NUMBER



478.67
1605.60
395.77
455.5
273.13
2735 = 5.51
200

ACREAGE

ACREAGE

ACREAGE

TRACT NO.	AREA IN AC.
A	27.279
B	16.067
C	12.900
D	37.571
E	22.756
116.573	

0205-390

This instrument was prepared by:
John A. Grant Jr., John A. Grant & Inc.
3333 North Federal Highway, Boca Raton, Fla.

BOCA DEL MAR #1 29/150