

SOUTH SHORE NO. 1 OF WELLINGTON

226

IN PART OF SECTIONS 10 & 11, TWP. 44 S., RGE. 41 E.

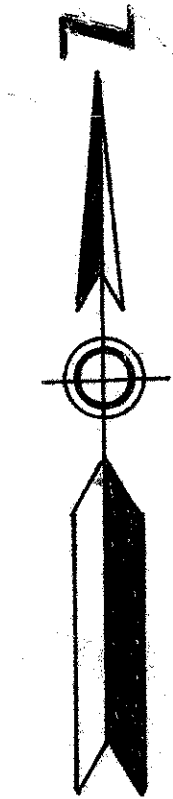
PALM BEACH COUNTY, FLORIDA
IN 5 SHEETS SHEET NO. 5

SCALE IN FEET
100 50 0 100 200 300 400

GEE & JENSON
CONSULTING ENGINEERS, INC.
WEST PALM BEACH, FLORIDA
AUGUST 1972

62

STATE OF FLORIDA
COUNTY OF PALM BEACH
This Plat was filed for record at _____ M.
this _____ day of _____, 1972,
and duly recorded in Plat Book No. _____
on page _____
JOHN B. DUNKLE, Clerk Circuit Court
By _____, D.C.



P.O.B.
(DESCRIPTION)

N. 89° 39' 42" W.
126.51'

SEC. 3-44-41
SEC. 10-44-41

Section Line 2
5911.79'

NOT PLATTED

NOT PLATTED

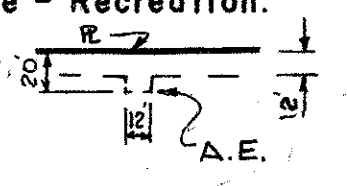
SHEET NO. 2

NOTE

Building Setback Lines shall be as required by Palm Beach County Zoning Regulations.
There shall be no buildings or other structures placed on Utility Easements.
There shall be no buildings or any kind of construction or trees or shrubs placed on Drainage Easements.

NOTE

All corner lot radii are 25 feet except as shown and the lot dimensions are to the straight line intersections, except where arc distances are shown.
Easements are for Public Utilities, unless otherwise noted.
○ denotes Permanent Control Point.
● denotes Permanent Reference Monument.
O.S.R. denotes Open Space - Recreation.
A.E. denotes Anchor Easement.



NOT PLATTED

SIDEWALK REQUIRED
TURNOUT REQUIRED

0332-380

29/226

SOUTH SHORE No 1 of WELLINGTON