

# GUN CLUB COLONY

IN SECTION 1, TOWNSHIP 44 SOUTH, RANGE 42 EAST  
PALM BEACH COUNTY, FLORIDA

IN 2 SHEETS SHEET NO. 2

PLAT NO. 1  
P. B. PLANTATIONS  
PLAT BOOK 10, PAGE 20

4201 (32)

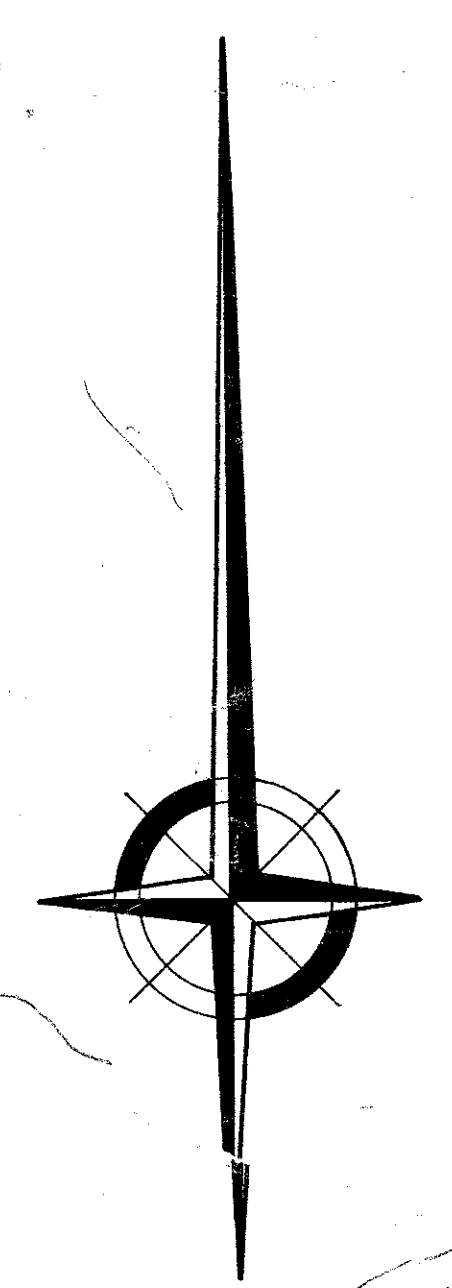
SIDEWALK REQUIRED  
TURNOUT REQUIRED

4750

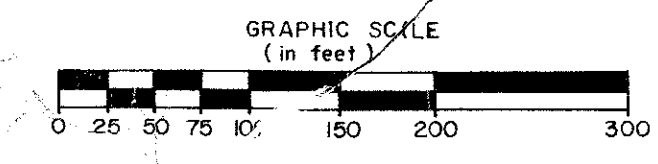
5000

WEST LINE SEC. 1

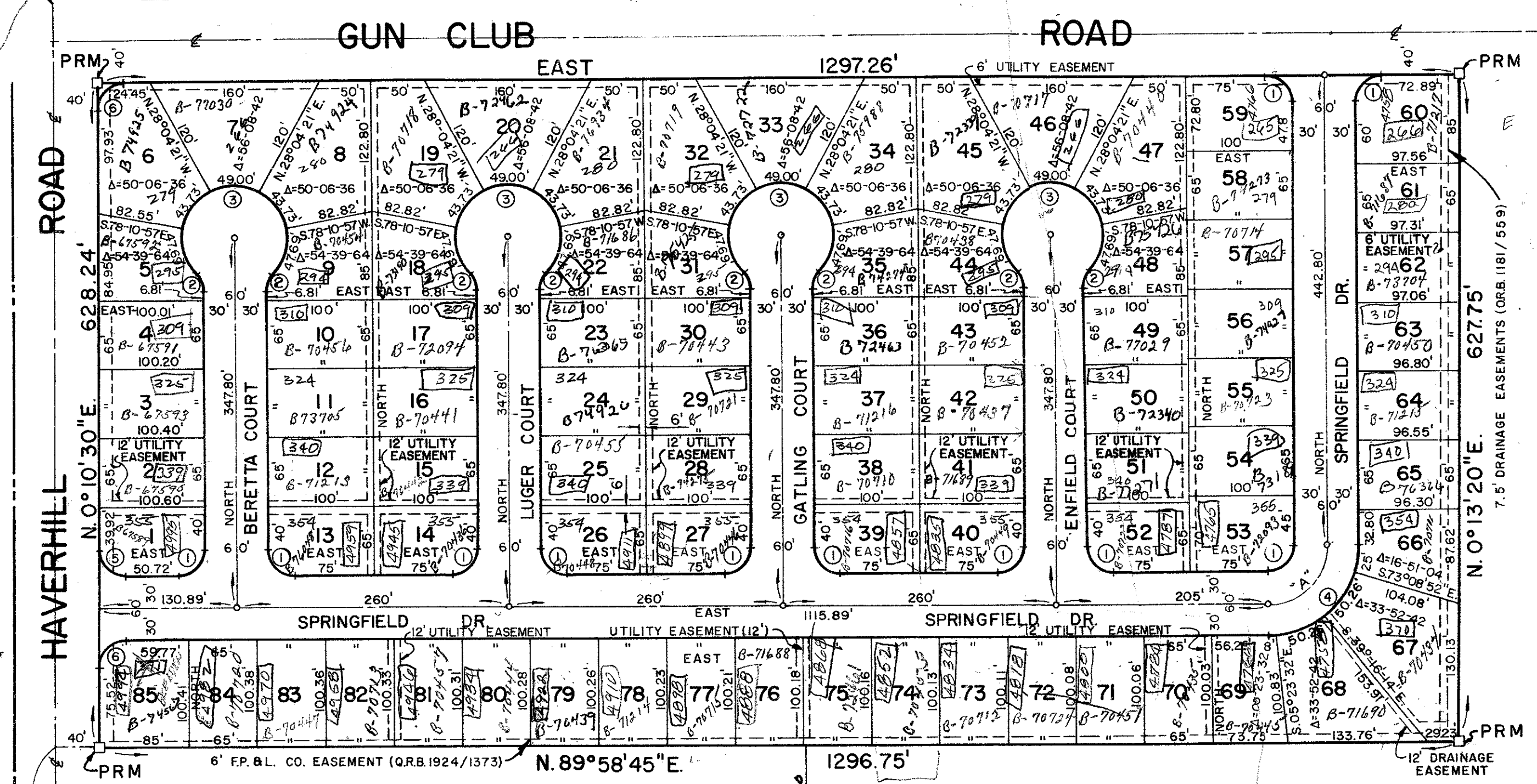
N 250



375



PLAT NO. 1  
P. B. PLANTATIONS  
PLAT BOOK 10, PAGE 20



ROYAL PINES  
PLAT BOOK 27, PAGE 29

PLAT NO. 1  
P. B. PLANTATIONS  
PLAT BOOK 10, PAGE 20

PLAT NO. 1  
P. B. PLANTATIONS  
PLAT BOOK 10, PAGE 20

## Palm Beach County Health Department

C. L. BRUMBACK, M.D., M.P.H.  
DIRECTOR

### MEMORANDUM

TO: Mr. Robert Crosby, Building Official  
Palm Beach County Building & Zoning Department

FROM: Frank J. Gargiulo, P.E., Acting Chief  
Bureau of Environmental Engineering

SUBJECT: Water and Sewer Connections to Palm Beach  
International Airport's Utility System

DATE: September 27, 1973

This agency has examined Palm Beach International Airport water supply and sewage disposal facilities and has determined that these cannot support additional load demands. Palm Beach International Airport's sewage treatment plant is currently operating under a temporary permit (No. TP 50-2300, copy enclosed), which does not allow additional connections to the system. Likewise, the water supply demands of its treatment facility are also exceeding the current capability of the plant.

Accordingly, we respectfully request that you do not issue construction permits for structures that require service from the Palm Beach International Airport's utility system until further notice from this office.

FJG/pg

cc: William A. Becker  
Public Health Engineer

enclosure

CENTRAL OFFICE  
206 S. VERMILION STREET  
P. O. BOX 20  
WEST PALM BEACH, FLORIDA  
33402  
Phone: 832-5561

AIR POLLUTION CONTROL  
1500 West 8th Street  
Palm Beach, Florida 33404  
Phone: 842-2561

BELLE GLADE HEALTH CENTER  
P. O. Box 234  
1324 Northway Avenue "D"  
Belle Glade, Florida 33408  
Phone: 996-5219

CENTRAL ENVIRONMENTAL  
SANITATION BRANCH  
2247 Palm Beach Lakes Blvd.  
West Palm Beach, Florida 33411  
Phone: 866-6550

DIVISION OF ENVIRONMENTAL  
SERVICES  
2247 Palm Beach Lakes Blvd.  
West Palm Beach, Florida 33411  
Phone: 842-5561

NORTHEAST COUNTY  
HEALTH CENTER  
1300 West 8th Street  
Palm Beach, Florida 33404  
Phone: 844-3561

FAHRENCE HEALTH CENTER  
P. O. Box 204  
1750 East Main Street  
Fahrence, Florida 33476  
Phone: 924-7191

MEDICAL CARE CLINIC  
1500 4th Street  
West Palm Beach, Florida 33407  
Phone: 842-4227

SOUTHEAST COUNTY  
HEALTH CENTER  
345 South Congress Avenue  
Okeechobee, Florida 33444  
Phone: 278-7711

Date: 9-27-1973

### INTER-OFFICE MEMORANDUM

TO: ROBERT CROSBY - BUILDING OFFICIAL

SUBJECT: GUN CLUB COLONY. SOU-44/42.

THIS DEPARTMENT HAS NO OBJECTION TO THE START OF RESIDENTIAL STRUCTURES IN THE SUBJECT SUBDIVISION PROVIDING THAT EACH LOT PLAN CLEARLY INDICATES A CONNECTION TO THE SEWER AND THE WATER SUPPLY. THERE IS NO REASON FOR THE HOUSE PLANS TO BE PROCESSED THROUGH THIS OFFICE. WE ARE GIVEN TO UNDERSTAND THAT SERVICE WILL BE AVAILABLE BY OCTOBER 1973.

*See back*

(32)

29/250

BROCKWAY, OWEN & ANDERSON  
ENGINEERS, INCORPORATED  
WEST PALM BEACH, FLORIDA

GUN CLUB COLONY

1000-262

IN 2 SHEETS SHEET NO. 2

FIELD: H. BLINN	SCALE: 1" = 100'	Job No. 72-1225
OFFICE: GIVENS		
DR. BY: C. N. Givens	DATE: NOV. 1972	Dwg. No. BF 2183
FIELD BK. D-56 Pg 51		

See Back

DRAWING NUMBER  
29-250

DRAWING NUMBER  
29-250

DRAWING NUMBER  
29-250

DRAWING NUMBER  
29-250