

30/21

**NOTE**  
Building Setback Lines shall be as required by Palm Beach County Zoning Regulations.

There shall be no buildings or other structures placed on Utility Easements.

There shall be no buildings or any kind of construction or trees or shrubs placed on Drainage Easements.

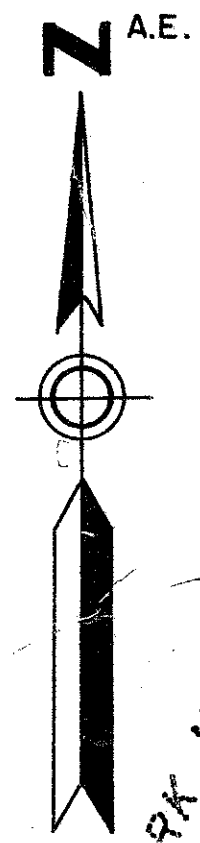
**NOTE**

All corner lot radii are 25 feet except as shown and the lot dimensions are to the straight line intersections, except where arc distances are shown.

Easements are for Public Utilities, unless otherwise noted.

- o denotes Permanent Control Point.
- denotes Permanent Reference Monument.

A.E. denotes Anchor Easement.



# SUGAR POND MANOR OF WELLINGTON

IN PART OF SECTIONS 4, 5, 8, 9, 16 & 17, TWP. 44 S., RGE. 41 E.

PALM BEACH COUNTY, FLORIDA

IN 13 SHEETS SHEET NO. 2

00 50 0 100 200 300 400

SCALE IN FEET  
SCALE: 1" = 100'

GEE & JENSON  
CONSULTING ENGINEERS, INC.  
WEST PALM BEACH, FLORIDA  
SEPTEMBER 1972

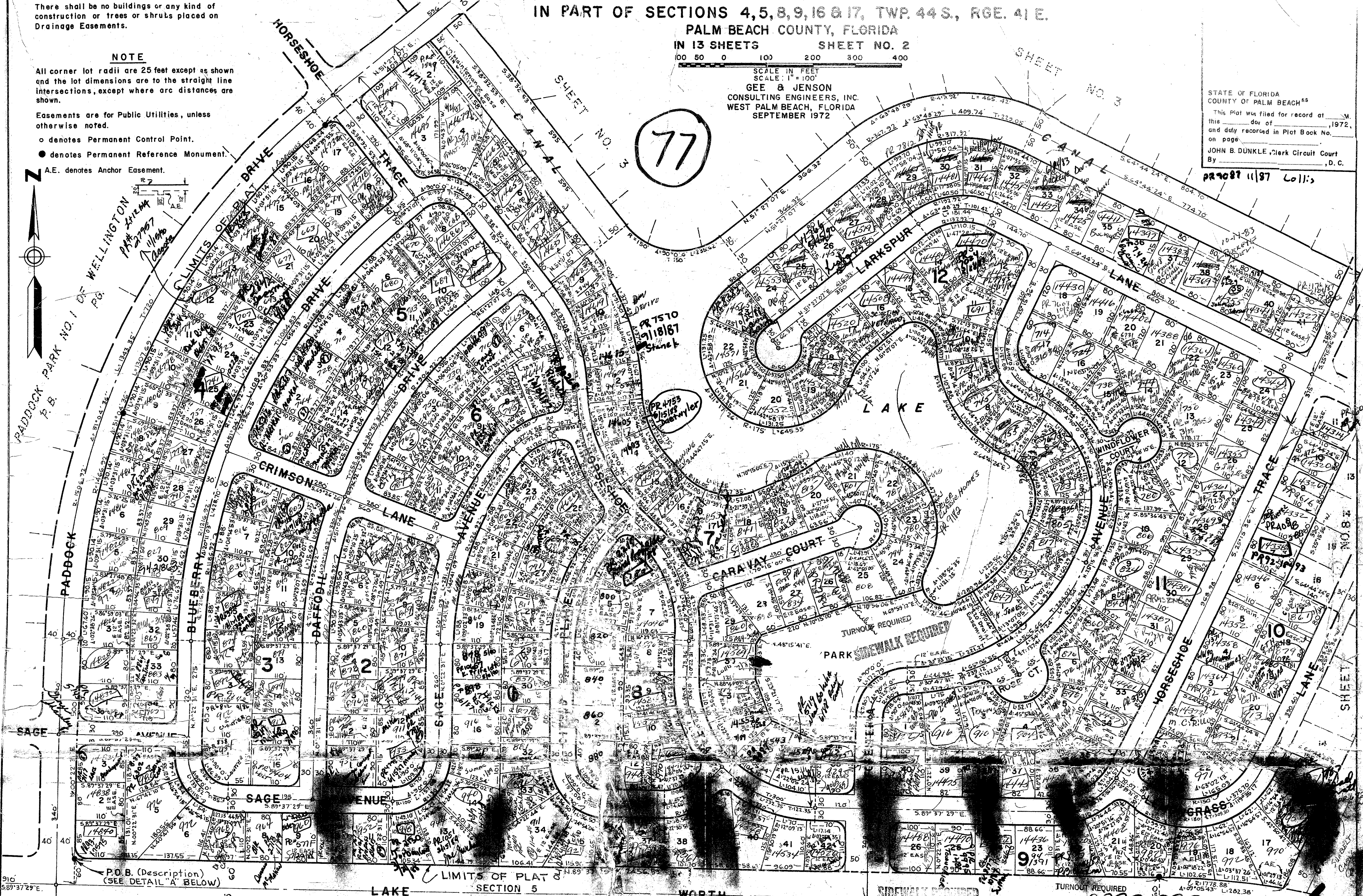
77

STATE OF FLORIDA  
COUNTY OF PALM BEACH

This Plat was filed for record at \_\_\_\_\_ M.  
this \_\_\_\_\_ day of \_\_\_\_\_, 1972,  
and duly recorded in Plat Book No. \_\_\_\_\_  
on page \_\_\_\_\_

JOHN B. DUNKLE, Clerk Circuit Court  
By \_\_\_\_\_, D.C.

227087 (197 Coll.)



P.O.B. (Description)  
(SEE DETAIL 'A' BELOW)

P.O.B. (SEE ABOVE)

PADDOCK PARK NO. 2 OF WELLINGTON

SUGAR POND MANOR OF WELLINGTON

30/21

Sheet 2