

SUGAR POND MANOR OF WELLINGTON

IN PART OF SECTIONS 4, 5, 8, 9, 16 & 17, TWP. 44 S., RGE. 41 E.

PALM BEACH COUNTY, FLORIDA
IN 13 SHEETS SHEET NO. 3



SCALE IN FEET
SCALE: 1" = 100'
GEE & JENSON
CONSULTING ENGINEERS, INC.
WEST PALM BEACH, FLORIDA
SEPTEMBER 1972

77



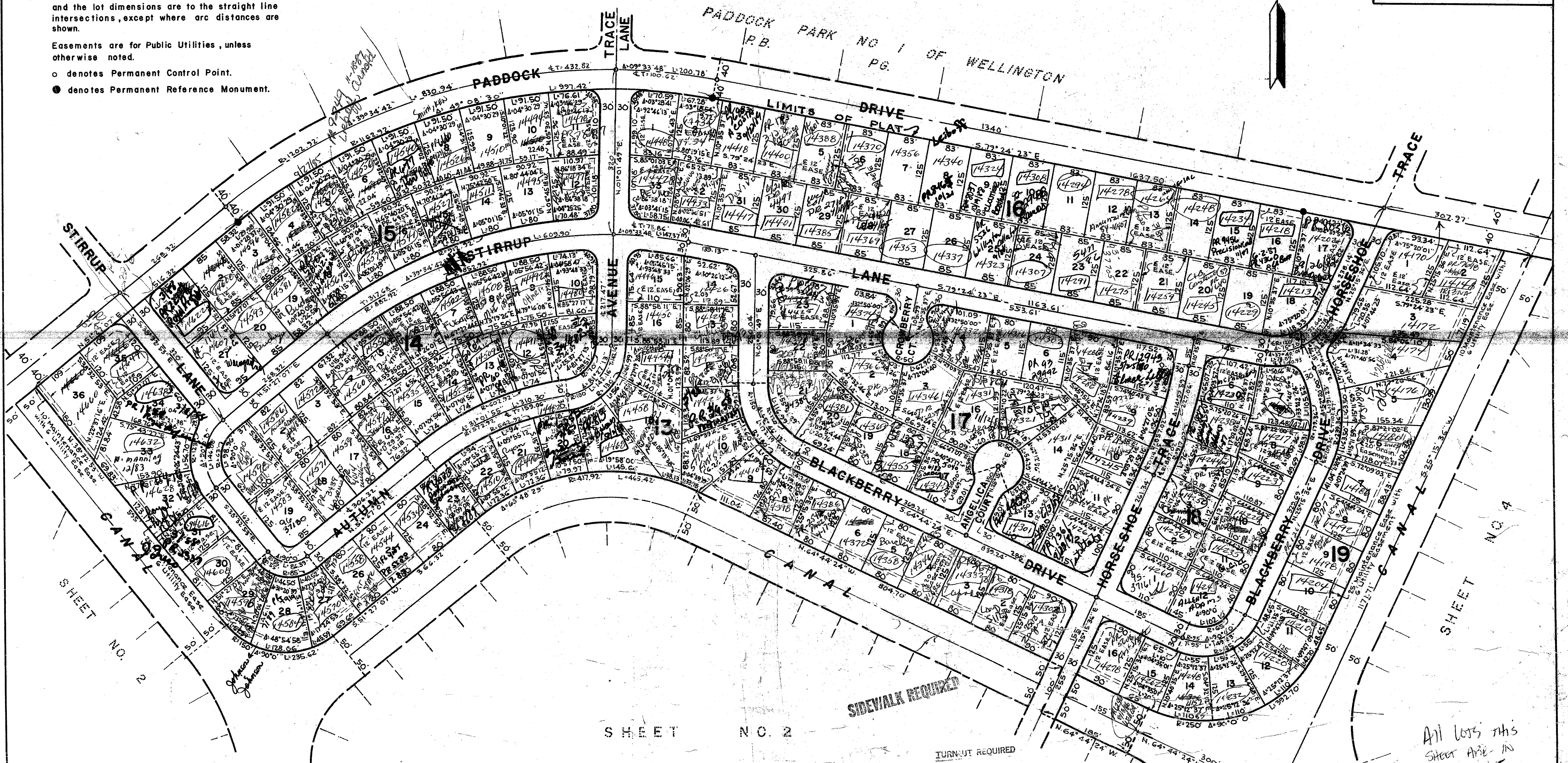
STATE OF FLORIDA
COUNTY OF PALM BEACH
This Plat was filed for record at _____ M.
this _____ day of _____, 1972,
and duly recorded in Plat Book No. _____
on page _____
JOHN B. DUNKLE, Clerk Circuit Court
By _____, D. C.

NOTE

Building Setback Lines shall be as required by Palm Beach County Zoning Regulations. There shall be no buildings or other structures placed on Utility Easements. There shall be no buildings or any kind of construction or trees or shrubs placed on Drainage Easements.

NOTE

All corner lot radii are 25 feet except as shown and the lot dimensions are to the straight line intersections, except where arc distances are shown. Easements are for Public Utilities, unless otherwise noted. o denotes Permanent Control Point. ● denotes Permanent Reference Monument.



SHEET NO. 2

SHEET NO. 8

All lots this sheet are in Section #5

0332-032 30/22
Sheet 3

SUGAR POND MANOR OF WELLINGTON