

SUGAR POND MANOR OF WELLINGTON

IN PART OF SECTIONS 4, 5, 8, 9, 16 & 17, TWP. 44 S., RGE. 41 E.

PALM BEACH COUNTY, FLORIDA
IN 13 SHEETS SHEET NO. 10

SCALE IN FEET
SCALE: 1" = 100'

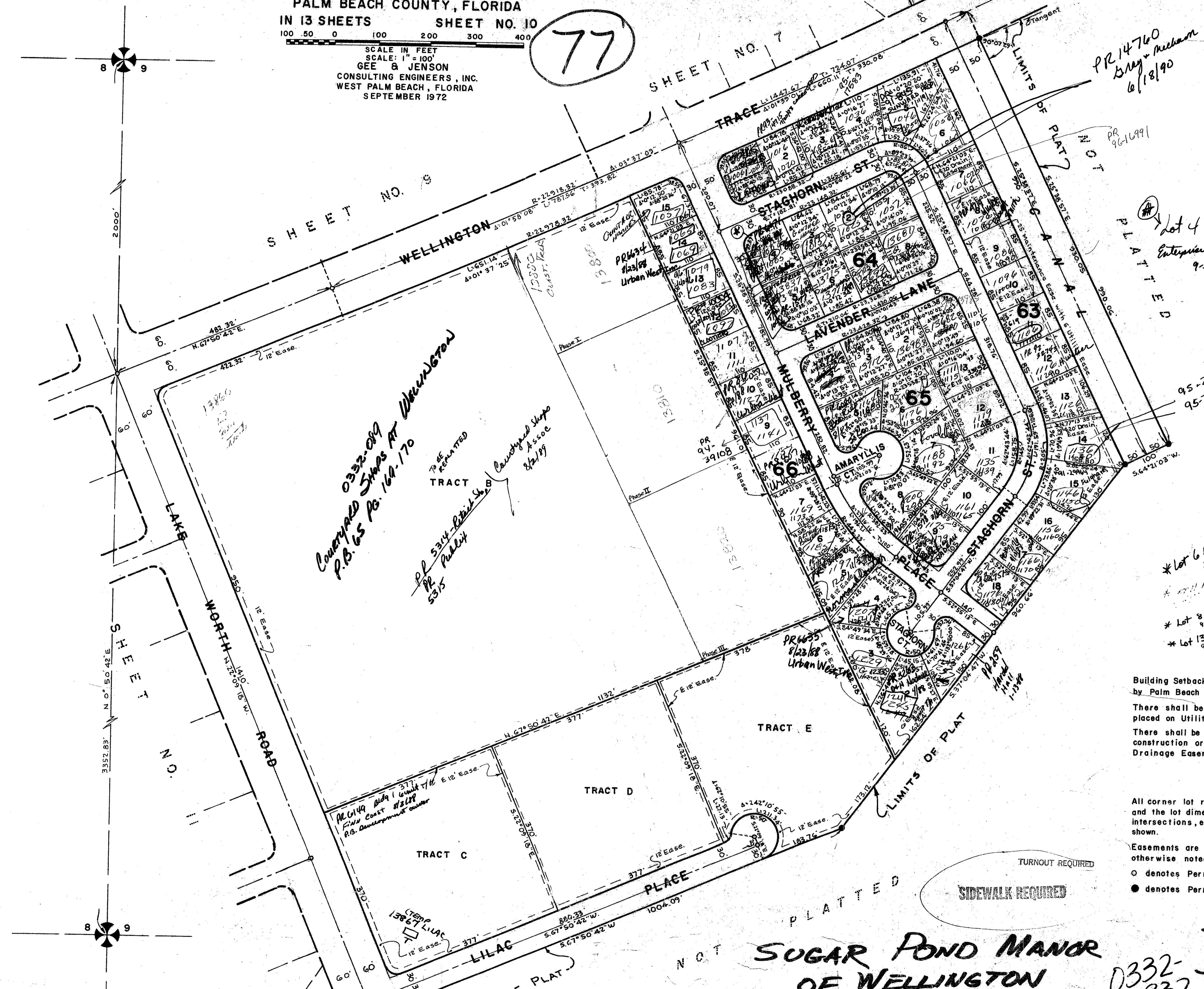
GEE & JENSON
CONSULTING ENGINEERS, INC.
WEST PALM BEACH, FLORIDA
SEPTEMBER 1972

77

BC 30 17-20-30

29

DRAWING NUMBER



PR 14760
May + Melham
6/18/90

PR 961699

Lot 4 Blk 64
Enterprise Const. Co. of Fla. Co.
9-5-89 A.S.P. in 8/4

0332-019
Covered Stairs at Wellington
P.B. 65 Pg. 169-170

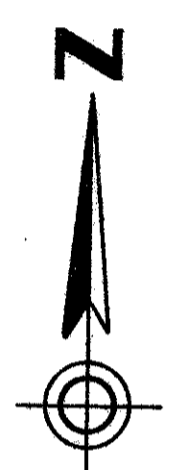
Phase I
Phase II

Phase III

* Lot 6 Blk 64 - 3/21/89
* Lot 8 Blk 65 - McGlowe
* Lot 13 Blk 65 - Varney
* Lot 14 Blk 63 McGlowe
95-20780 + 17801

NOTE
Building Setback Lines shall be as required by Palm Beach County Zoning Regulations.
There shall be no buildings or other structures placed on Utility Easements.
There shall be no buildings or any kind of construction or trees or shrubs placed on Drainage Easements.

NOTE
All corner lot radii are 25 feet except as shown and the lot dimensions are to the straight line intersections, except where arc distances are shown.
Easements are for Public Utilities, unless otherwise noted.
○ denotes Permanent Control Point.
● denotes Permanent Reference Monument.



NOT PLATTED
SUGAR POND MANOR OF WELLINGTON

0332-332
30/29