

39/40

PLAT NO. I VILLAGES OF ORIOLE

IN SECTIONS 15 & 16, TWP 46 S., RGE. 42 E
PALM BEACH COUNTY, FLORIDA

SHEET 3 OF 3

6215 (36)
6216 (51)

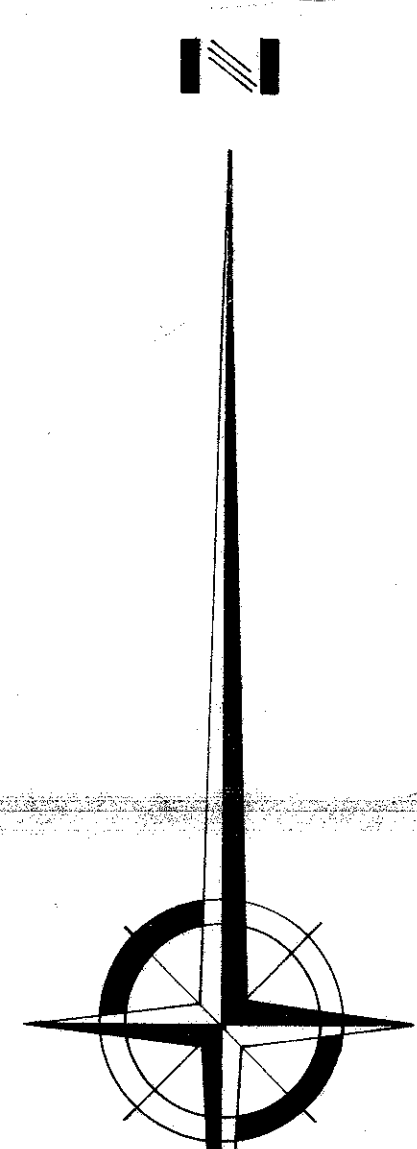
40

473.11	6.07	6.07
6500		
473.11		
6215.11	6.07	6.07
473.11		

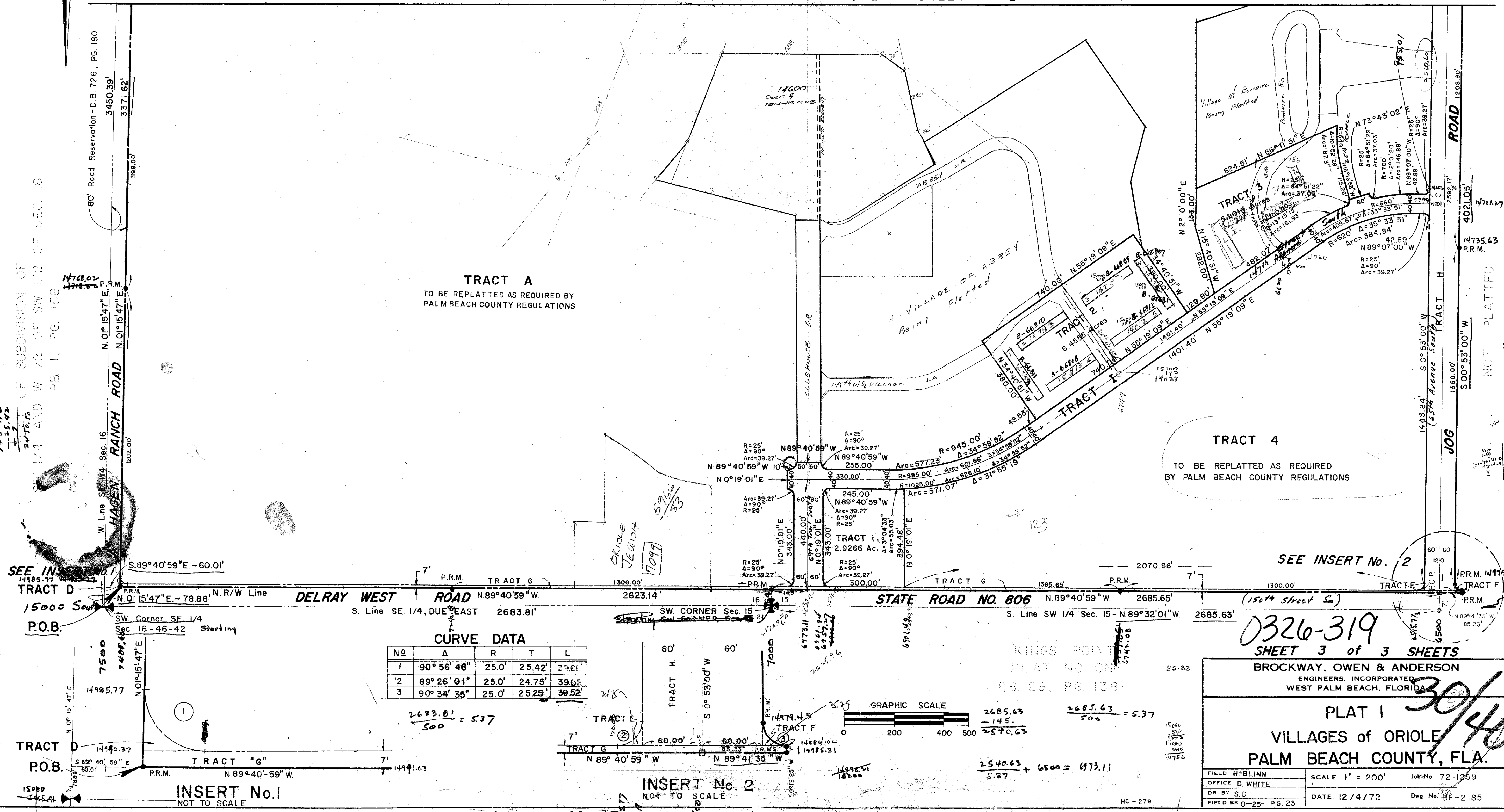
STATE OF FLORIDA
COUNTY OF PALM BEACH

This Plat was filed for record at _____ M.
this _____ day of _____
19____ and duly recorded in Plat Book No. _____
on page _____

JOHN B. DUNKLE, Clerk Circuit Court
By _____, D. C.



MATCH LINE SEE SHEET 2



TRACT A
TO BE REPLATTED AS REQUIRED BY
PALM BEACH COUNTY REGULATIONS

TRACT 4
TO BE REPLATTED AS REQUIRED BY
PALM BEACH COUNTY REGULATIONS

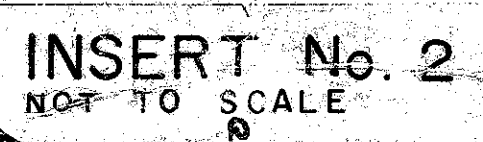
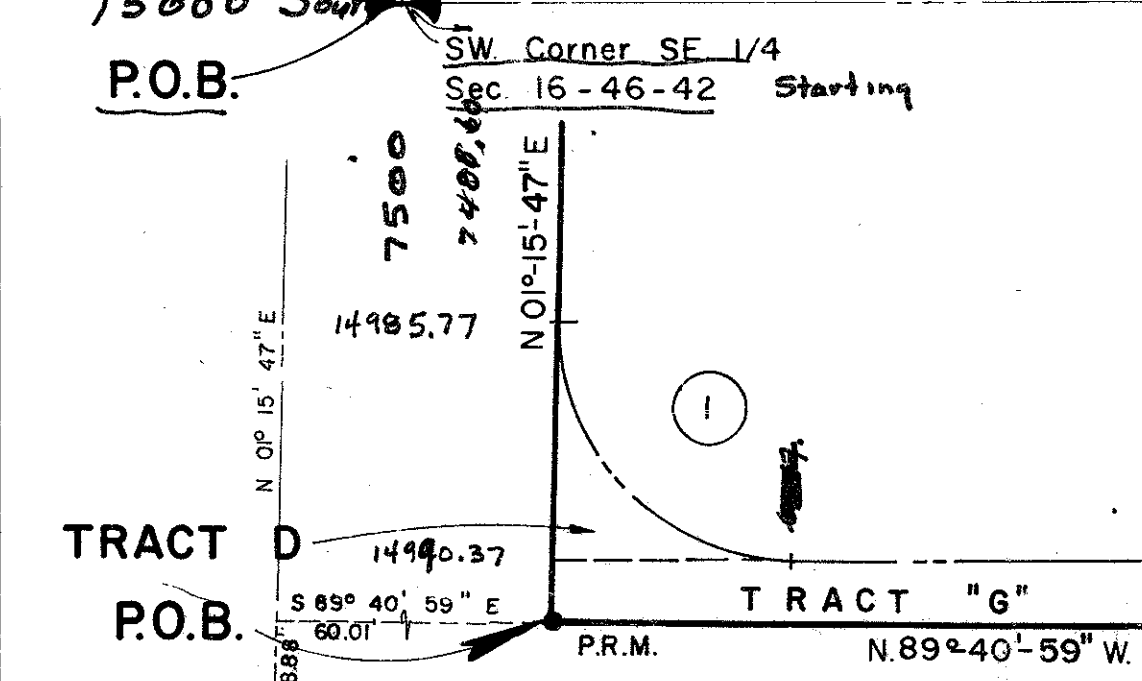
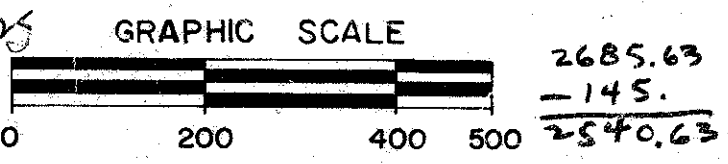
OF SUBDIVISION OF
1/4 AND W 1/2 OF SW 1/2 OF SEC. 16
PB I, PG. 158

SEE IN
TRACT D

SEE INSERT No. 2

CURVE DATA

NO	Δ	R	T	L
1	90° 56' 46"	25.0'	25.42'	27.61'
2	89° 26' 01"	25.0'	24.75'	39.02'
3	90° 34' 35"	25.0'	25.25'	39.52'



0326-319
SHEET 3 of 3 SHEETS

BROCKWAY, OWEN & ANDERSON
ENGINEERS, INCORPORATED
WEST PALM BEACH, FLORIDA

PLAT I
VILLAGES of ORIOLE
PALM BEACH COUNTY, FLA.

FIELD H:BLINN	SCALE 1" = 200'	Job No: 72-1259
OFFICE D:WHITE		
DR BY S.D	DATE 12/4/72	Dwg No: BF-2185
FIELD BK 0-25 P.G. 23		

78.88
3371.63
3250.50

71.50
1121.51

NOT PLATTED
VSE 5.58

2685.63
145.
2540.63

2685.63
145.
2540.63

2540.63 + 6500 = 473.11
5.37

HC - 279