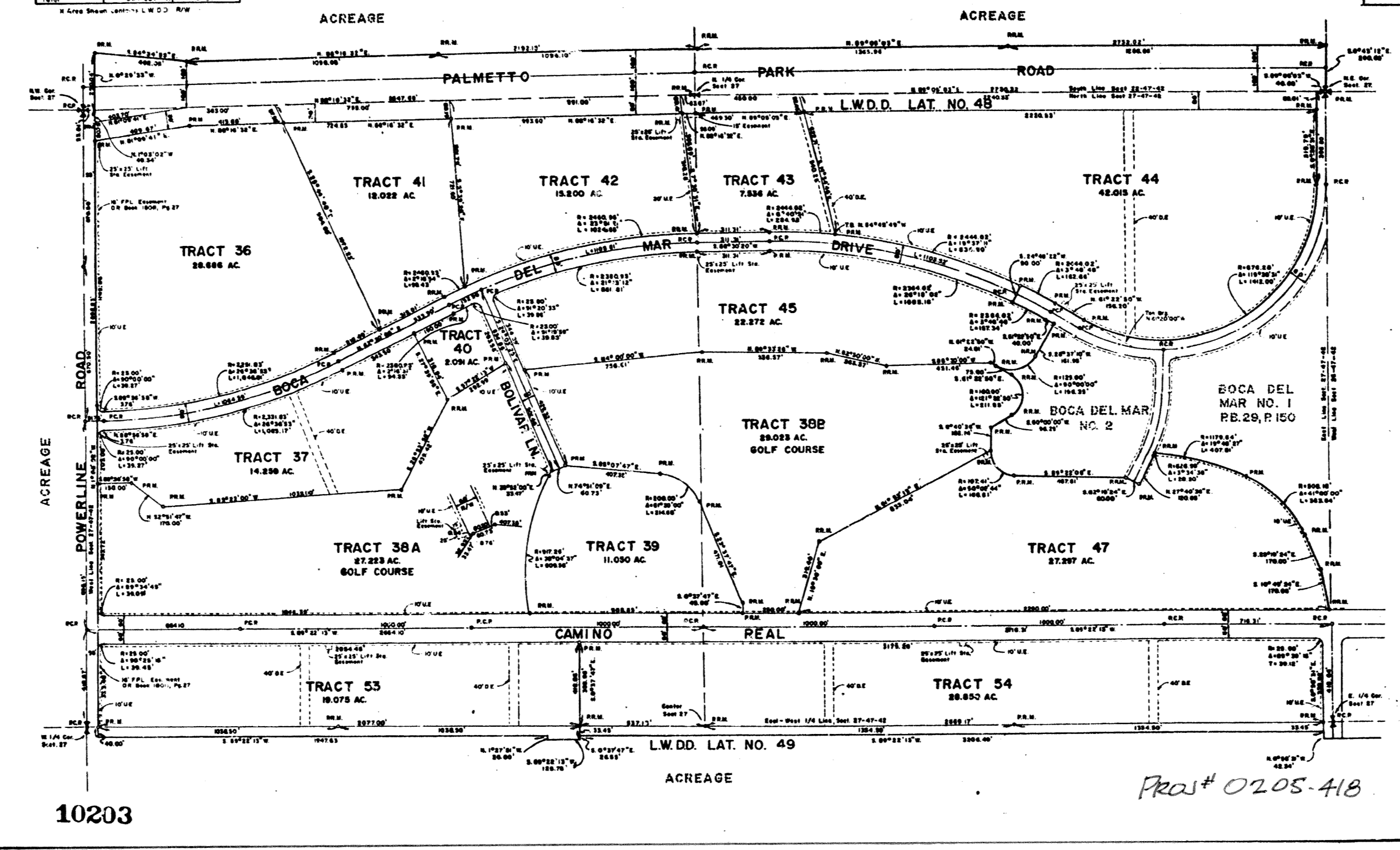


TRACT NO.	AREA	NO OF UNITS
36	28.886	446
37	14.250	219
38A	27.272	414
38B	28.013	424
39	11.050	168
40	2.091	31
41	18.022	273
42	15.800	239
43	7.836	119
44	42.015	633
45	22.272	337
47	27.297	413
53	18.075	273
54	28.850	435
55	18.075	273
56	15.254	229
Subtotal	313.24	4711
Area of Paved	3.549	
Total	316.789	

P.U.D
BOCA DEL MAR NO. 3
 A PLAT OF A PORTION OF SEC. 22, 26 & 27 TWP. 47S. RGE 42E.
 PALM BEACH COUNTY, FLORIDA
 JOHN A. GRANT JR., INC. CONSULTING ENGINEERS & LAND SURVEYOR BOCA RATON, FLORIDA

30-84

MARCH 1973
 Sheet 3 of 3
 Scale 1" = 200'



10203

Proj# 0205-418