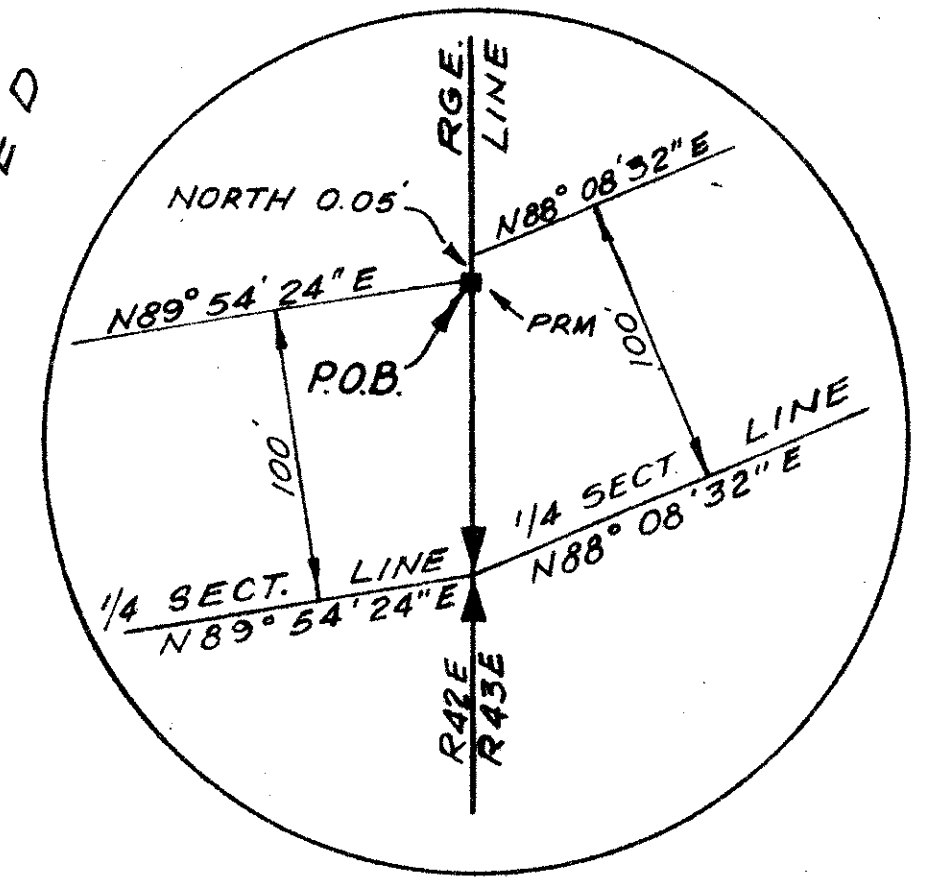
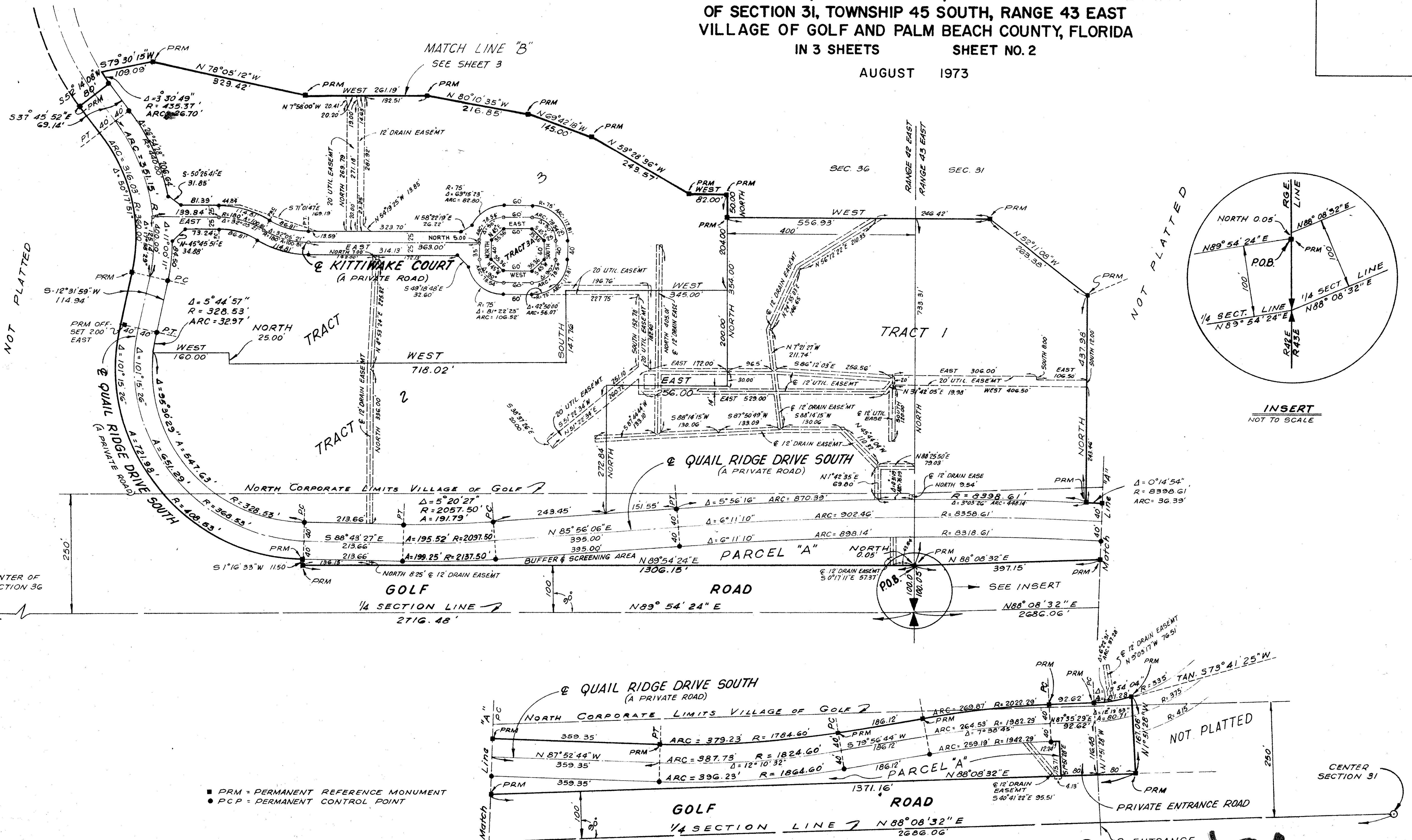
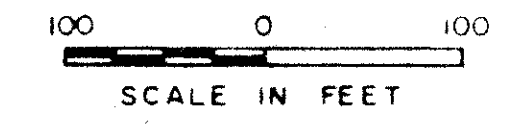


30/96

PLAT NO. I QUAIL RIDGE

(A PLANNED UNIT DEVELOPMENT)
BEING A SUBDIVISION OF A PORTION OF THE NE 1/4 OF SECTION 36,
TOWNSHIP 45 SOUTH, RANGE 42 EAST, AND A PORTION OF THE NW 1/4
OF SECTION 31, TOWNSHIP 45 SOUTH, RANGE 43 EAST
VILLAGE OF GOLF AND PALM BEACH COUNTY, FLORIDA
IN 3 SHEETS SHEET NO. 2

AUGUST 1973



■ PRM - PERMANENT REFERENCE MONUMENT
● PCP - PERMANENT CONTROL POINT

1000-193

30/96

DATE OF PRINT
NOV 15 1979

THIS INSTRUMENT WAS PREPARED BY
S. V. HOWARD
MOCK, ROOS & SEARCY, INC.
CONSULTING ENGINEERS
2930 OKEECHOBEE BOULEVARD
WEST PALM BEACH, FLORIDA 33411