

02/1/66

ESTANCIA

IN SECTION 15, TWP. 47S., RGE. 42 E.

PALM BEACH COUNTY, FLORIDA

IN 2 SHEETS SHEET NO 2

GEE & JENSON
CONSULTING ENGINEERS, INC.
WEST PALM BEACH, FLORIDA
MAY 1973

SCALE IN FEET
SCALE: 1" = 100'



170

STATE OF FLORIDA
COUNTY OF PALM BEACH
This Plat was filed for record at
this _____ day of _____, 1973,
and duly recorded in Plat Book No.
on page
JOHN B. DUNKLE, Clerk Circuit Court
By _____, D.C.

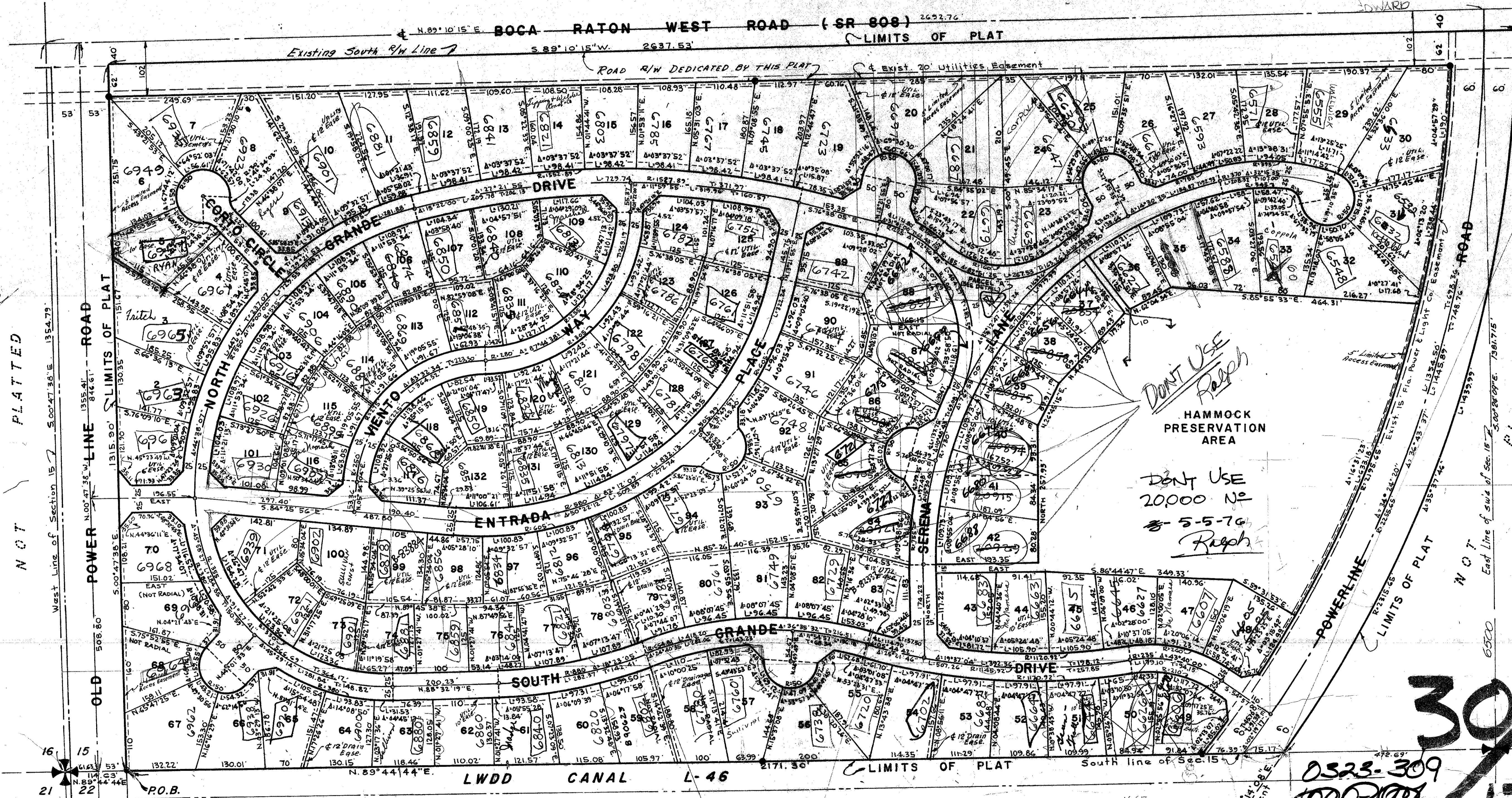
PLATTED

TURNOUT REQUIRED

SIDEWALK REQUIRED

ESTANCIA
BOCA RATON
NOT

29.60
2.50
8.28
8.93
10.43
46.74



DONT USE
Rough

DONT USE
20000 N2
5-5-76
Rough

30/170

0323-309
~~000200~~

0323-309

ESTANCIA

NOT PLATTED

5.27.506

507 9.76
2.2104

DEDICATE FOR
UTILITIES
MAIL

732-4944

47 B3
48 B3
49 B3
50 B3

NOT PLATTED

NOT PLATTED

P.O.B.

1-1-10 78 44