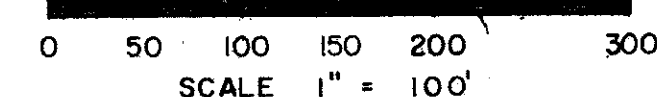


HOLIDAY CITY AT BOCA RATON SECTION 3 A PLAT OF A PORTION OF SECTION 25 & 26, TWP 47 SOUTH, RANGE 41 EAST AND A REPLAT OF A PORTION OF BLK.12, FLORIDA FRUIT LAND CO. SUBDIVISION NO. 2 AS RECORDED IN PLAT BOOK NO. 1, PAGE 102, PUBLIC RECORD OF PALM BEACH COUNTY, FLORIDA

PALM BEACH COUNTY, FLORIDA
JOHN A. GRANT JR., INC.
CONSULTING ENGINEERS AND LAND SURVEYORS
BOCA RATON, FLORIDA



SCALE 1" = 100'
JANUARY 1974

Sheet 2 of 2



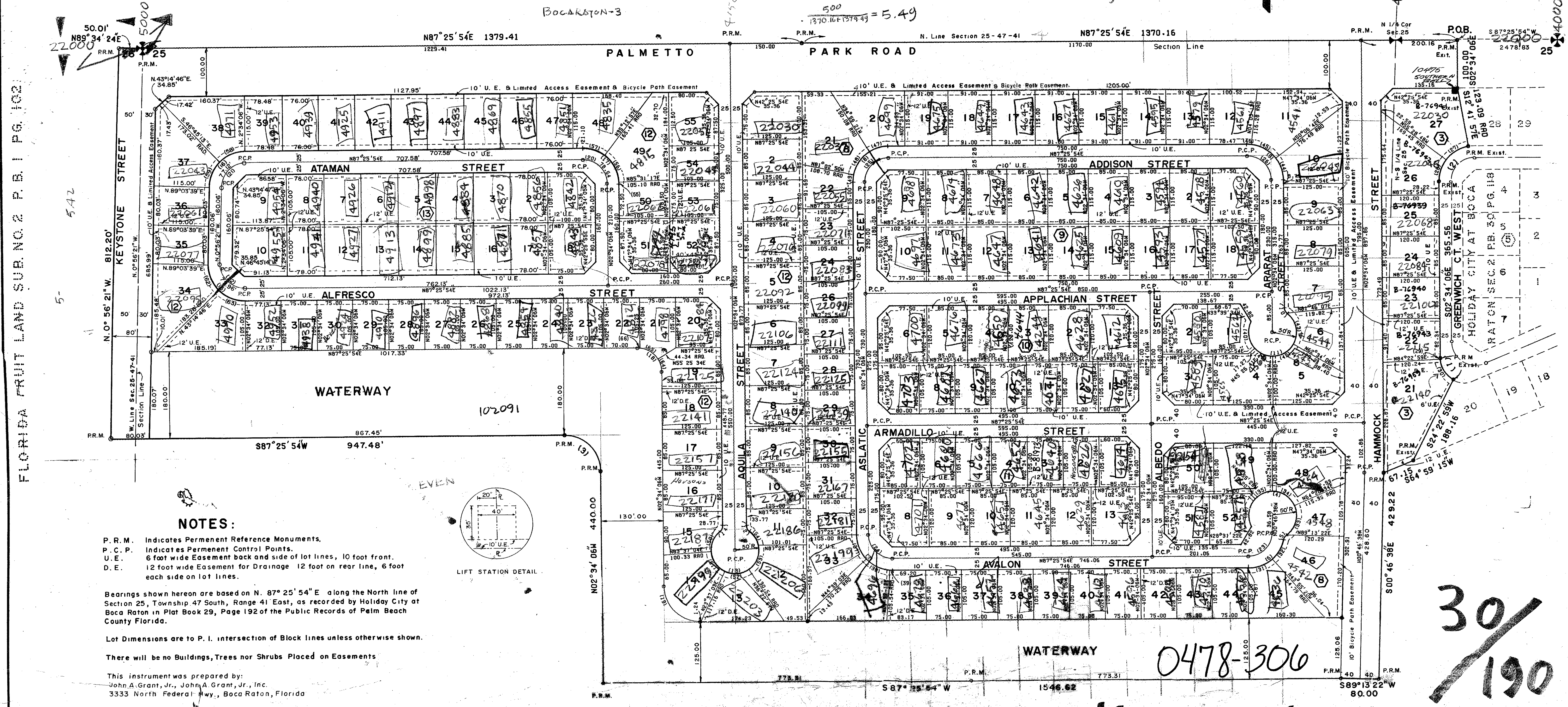
TURNOUT REQUIRED



FLORIDA FRUIT LAND CO. SUB. NO. 2
P.B. 1 PG 102

NO.	ARC LENGTH	RADIUS	DELTA	TAN	L.CH.	CH.BRG.
1	55.02	50.00	63.02 56	30.67	52.29	N34 05 34 4
2	104.55	75.00	79.52 08	62.79	96.29	N37 21 56 6
3	117.81	75.00	90.00 00	75.00	106.07	N47 34 06 8
4	229.65	50.00	263.09 27	NONE	NONE	N78 48 28 0
5	111.39	15.00	43.30 00	5.98	11.12	N51 01 15 2
6	102.31	75.00	78.09 40	60.91	94.56	N48 21 04 2
7	117.81	75.00	90.00 00	75.00	106.07	N47 34 06 8
8	117.81	75.00	90.00 00	75.00	106.07	N47 34 06 8
9	117.81	75.00	90.00 00	75.00	106.07	N47 34 06 8
10	13.62	15.00	62.01 13	7.32	13.16	N28 34 43 4
11	226.75	50.00	259.50 17	NONE	NONE	N75 19 51 2
12	13.62	15.00	62.01 14	7.32	13.16	N28 34 41 4
13	247.87	50.00	284.02 25	NONE	NONE	N87 25 54 2
14	13.62	15.00	62.01 12	7.32	13.16	N28 34 30 2
15	119.34	75.00	91.37 45	77.15	107.55	N46 45 13 4
16	115.68	75.00	88.22 15	72.90	104.55	N43 14 47 2
17	117.81	75.00	90.00 00	75.00	106.07	N47 34 06 8
18	78.54	50.00	90.00 00	50.00	70.71	N47 34 06 8
19	117.81	75.00	90.00 00	75.00	106.07	N47 34 06 8
20	78.54	50.00	90.00 00	50.00	70.71	N47 34 06 8
21	77.12	50.00	88.22 15	48.60	69.70	N43 14 46 2
22	79.96	50.00	91.37 45	51.44	71.71	N46 45 14 4
23	76.98	50.00	88.12 32	48.46	69.60	N43 13 39 2
24	78.54	50.00	90.00 00	50.00	70.71	N47 34 06 8
25	78.54	50.00	90.00 00	50.00	70.71	N47 34 06 8
26	78.54	50.00	90.00 00	50.00	70.71	N47 34 06 8
27	56.00	75.00	42.46 50	29.38	54.71	N55 54 37 2
28	48.55	75.00	37.05 18	25.16	47.71	N15 58 33 2
29	2.66	50.00	03.02 56	1.33	2.66	N04 05 37 4
30	52.56	50.00	50.00 00	28.87	50.00	N33 37 02 4
31	54.13	75.00	41.21 14	28.31	52.96	N66 45 18 2
32	48.18	75.00	36.48 26	24.95	47.36	N27 40 27 2
33	68.44	50.00	78.25 41	40.80	63.22	N13 33 24 2

NO.	ARC LENGTH	RADIUS	DELTA	TAN	L.CH.	CH.BRG.
34	58.39	50.00	66.54 40	33.04	55.13	N59 06 46 4
35	40.46	50.00	46.21 23	21.41	39.36	N64 15 13 2
36	62.36	50.00	71.27 43	35.97	59.40	N05 20 40 2
37	56.00	75.00	42.46 51	29.38	54.71	N66 44 23 4
38	56.00	75.00	42.46 51	29.38	54.71	N66 44 23 4
39	5.81	75.00	04.26 18	2.91	5.81	N89 39 03 2
40	60.92	50.00	69.48 13	34.88	57.22	N09 39 10 4
41	41.90	50.00	48.00 40	22.27	40.68	N68 33 43 4
42	52.36	50.00	60.00 00	28.87	50.00	N57 25 54 2
43	71.57	50.00	82.01 12	43.48	65.62	N13 34 42 4
44	48.85	75.00	37.19 12	25.33	47.99	N21 13 42 4
45	60.29	75.00	46.03 29	31.88	58.68	N62 55 02 4
46	8.67	75.00	06.37 19	4.34	8.66	N89 13 25 4
47	42.44	75.00	32.25 15	21.80	41.87	N71 13 17 2
48	60.29	75.00	46.03 29	31.88	58.68	N31 58 54 2
49	15.08	75.00	11.31 18	7.57	15.06	N03 11 32 2
50	48.72	50.00	55.50 02	26.49	46.82	N21 32 05 2
51	52.36	50.00	60.00 00	28.87	50.00	N36 22 54 4
52	52.36	50.00	60.00 00	28.87	50.00	N33 07 03 2
53	59.10	50.00	67.43 22	33.55	55.72	N19 45 22 2
54	35.33	50.00	40.29 00	18.44	34.60	N34 20 49 4
55	2.50	75.00	01.54 37	1.25	2.50	N03 31 27 4
56	65.85	75.00	50.18 20	35.22	63.76	N23 37 53 4
57	49.45	75.00	37.47 03	26.67	48.57	N78 40 34 4
58	57.84	75.00	44.11 07	30.44	56.42	N62 20 20 2
59	57.84	75.00	44.11 08	30.44	56.42	N21 09 13 2
60						
61						
62	59.97	75.00	45.48 53	31.69	58.39	N23 50 47 4
63	59.97	75.00	45.48 52	31.69	58.39	N69 39 40 4
64	27.93	50.00	32.00 19	14.34	27.97	N18 34 15 4
65	45.60	50.00	52.15 20	24.32	44.04	N60 42 05 4
66	5.01	50.00	05.44 21	2.51	5.01	N89 41 35 4



NOTES:

- P. R. M. Indicates Permanent Reference Monuments.
- P. C. P. Indicates Permanent Control Points.
- U. E. 6 foot wide Easement back and side of lot lines, 10 foot front.
- D. E. 12 foot wide Easement for Drainage 12 foot on rear line, 6 foot each side on lot lines.

Bearings shown hereon are based on N. 87° 25' 54" E. along the North Line of Section 25, Township 47 South, Range 41 East, as recorded by Holiday City at Boca Raton in Plat Book 29, Page 192 of the Public Records of Palm Beach County Florida.

Lot Dimensions are to P. I. intersection of Block lines unless otherwise shown.

There will be no Buildings, Trees nor Shrubs Placed on Easements

This instrument was prepared by:
John A. Grant, Jr., John A. Grant, Jr., Inc.
3333 North Federal Hwy., Boca Raton, Florida

0478-306

30/190

DRAWING NUMBER
30/190

DRAWING NUMBER
FLORIDA FRUIT LAND SUB. NO. 2 P.B. 1 PG. 102

DRAWING NUMBER
FLORIDA FRUIT LAND SUB. NO. 2 P.B. 1 PG. 102

DRAWING NUMBER
FLORIDA FRUIT LAND SUB. NO. 2 P.B. 1 PG. 102