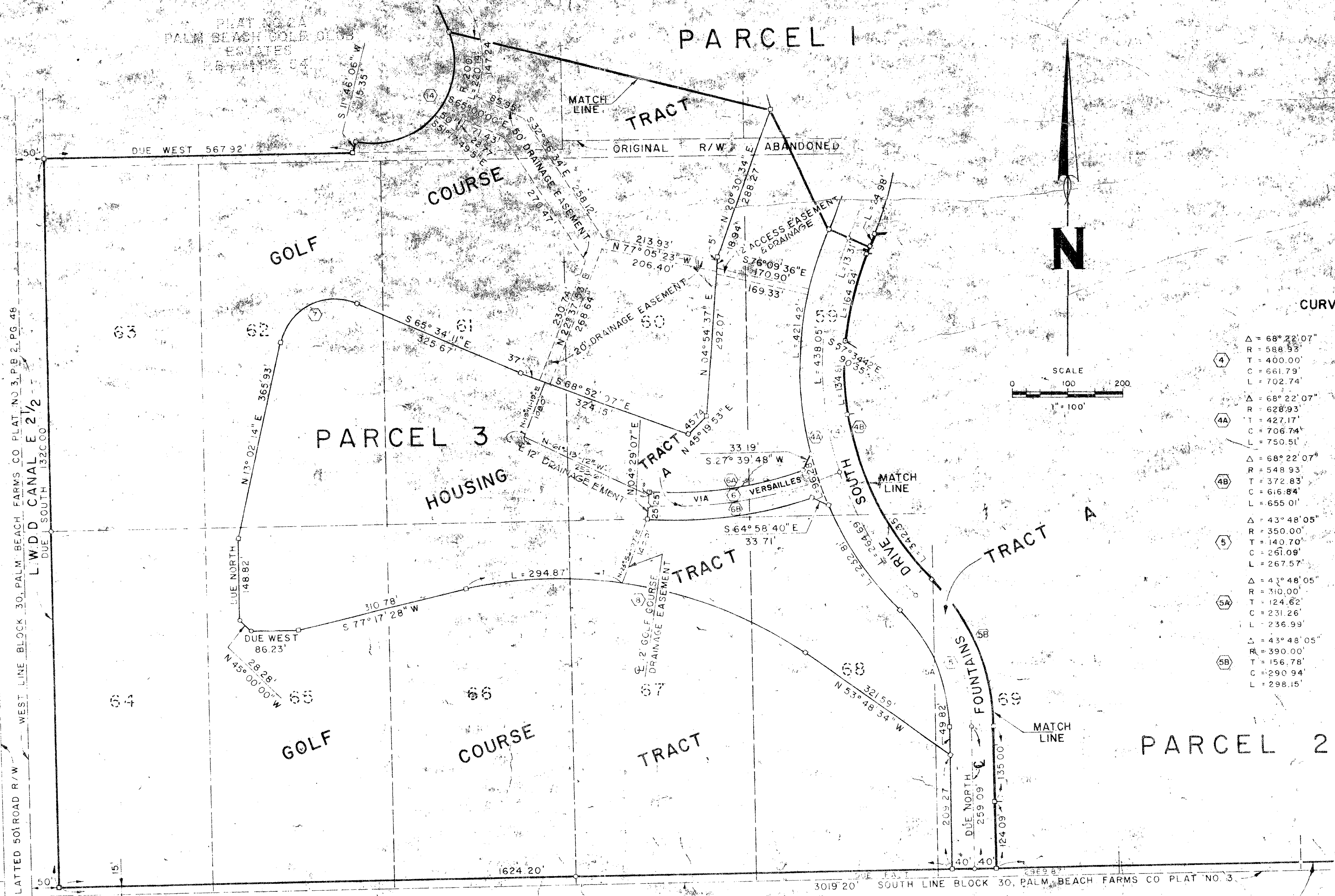


30/196

96

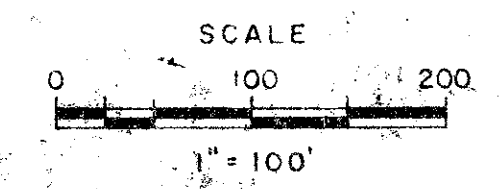
PLAT 5

Palm Beach Golf Club Estates



CURVE DATA

④	Δ = 68° 22' 07"	⑥	Δ = 26° 31' 10"
	R = 588.93'		R = 765.13'
	T = 400.00'		T = 180.30'
	C = 661.79'		C = 350.99'
	L = 702.74'		L = 354.14'
④A	Δ = 68° 22' 07"	⑥A	Δ = 21° 50' 50"
	R = 628.93'		R = 740.13'
	T = 427.17'		T = 142.84'
	C = 706.74'		C = 280.51'
	L = 750.51'		L = 282.21'
④B	Δ = 68° 22' 07"	⑥B	Δ = 21° 50' 50"
	R = 548.93'		R = 790.13'
	T = 372.83'		T = 152.49'
	C = 616.84'		C = 239.46'
	L = 655.01'		L = 321.28'
⑤	Δ = 43° 48' 05"	⑦	Δ = 10° 23' 35"
	R = 350.00'		R = 100.00'
	T = 140.70'		T = 122.16'
	C = 261.09'		C = 154.76'
	L = 267.57'		L = 176.35'
⑤A	Δ = 43° 48' 05"	⑧	Δ = 43° 53' 58"
	R = 310.00'		R = 758.70'
	T = 124.62'		T = 344.95'
	C = 231.26'		C = 628.05'
	L = 236.99'		L = 647.52'
⑤B	Δ = 43° 48' 05"	④	Δ = 126° 07' 51"
	R = 390.00'		R = 150.33'
	T = 156.78'		T = 295.22'
	C = 290.94'		C = 267.46'
	L = 298.15'		L = 330.21'



The North right-of-way line of Lake Worth Drainage District Canal L-14 is assumed to be due East and all other bearings are relative thereto.

L.W.D.D. CANAL L-14 R/W

BLOCK 31
PALM BEACH FARMS CO. PLAT NO. 3
P.B. 2, PG. 48

1000-199 30/196

ADAIR & BRADY INC.
CONSULTING ENGINEERS &
LAND SURVEYORS
ORLANDO, FLORIDA

DATE: 1-21-74
GRAPHIC: 71/532J

FOUNTAINS TRACT - 8

FP 823 4 4