

LAKEWOOD OF BOCA WEST P.U.D.

IN PART OF SECTIONS 9 & 16, TWP. 47S., RGE. 42E.

201

PALM BEACH COUNTY, FLORIDA
IN 5 SHEETS SHEET NO. 3

GEE & JENSON
CONSULTING ENGINEERS, INC.
WEST PALM BEACH, FLORIDA
NOVEMBER 1973

SCALE IN FEET
SCALE: 1" = 60'

53



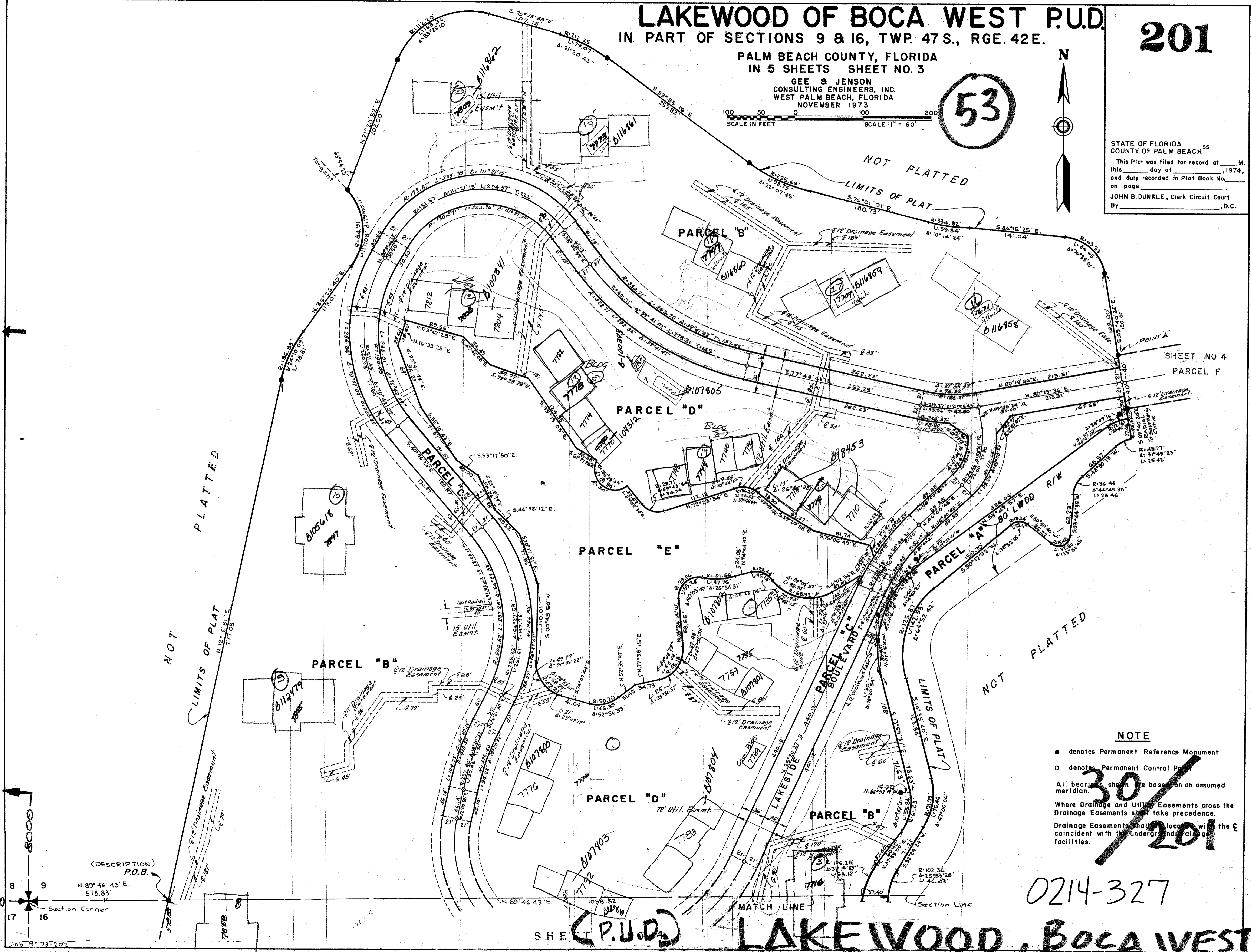
STATE OF FLORIDA
COUNTY OF PALM BEACH
This Plat was filed for record at _____ M.
this _____ day of _____, 1974,
and duly recorded in Plat Book No. _____
on page _____
JOHN B. DUNKLE, Clerk Circuit Court
By _____, D.C.

DRAWING NUMBER
30/201

DRAWING NUMBER

DRAWING NUMBER

DRAWING NUMBER



NOTE

- denotes Permanent Reference Monument
- denotes Permanent Control Point

All bearings shown are based on an assumed meridian.

Where Drainage and Utility Easements cross the Drainage Easements shall take precedence.

Drainage Easements shall be located with the center coincident with the underground drainage facilities.

0214-327

LAKEWOOD, BOCA WEST