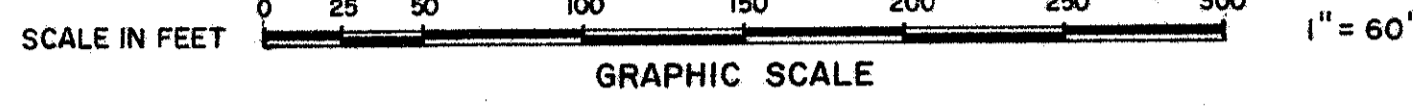


PLAT OF "SANDALFOOT COVE SECTION SEVEN" BEING A REPLAT OF PORTIONS OF PALM BEACH FARMS PLAT NO. 3, PLAT BOOK 2, PAGE 53, SECTIONS 29 AND 30, TOWNSHIP 47, SOUTH, RANGE 42 EAST, PALM BEACH COUNTY, FLORIDA

SEPTEMBER 24, 1973



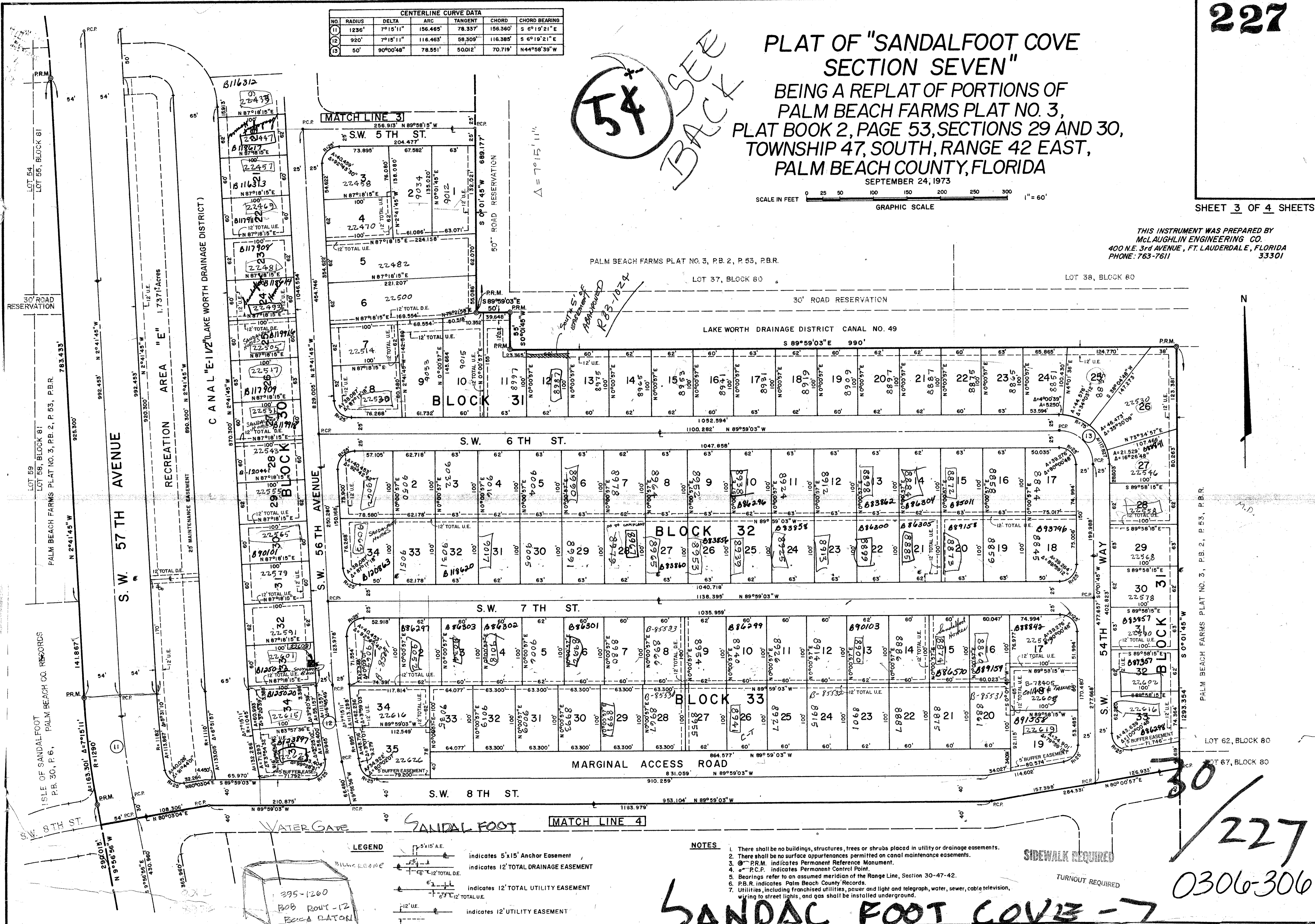
SHEET 3 OF 4 SHEETS

THIS INSTRUMENT WAS PREPARED BY McLAUGHLIN ENGINEERING CO. 400 N.E. 3rd AVENUE, FT. LAUDERDALE, FLORIDA PHONE: 763-7611 33301

Table with 5 columns: NO., RADIUS, DELTA, ARC, TANGENT, CHORD, CHORD BEARING. It lists curve data for sections 29 and 30.

Handwritten '54' in a circle and 'BACKSEE' written vertically.

Delta = 7°15'11"



50/227

DRAWING NUMBER

DRAWING NUMBER

DRAWING NUMBER

- LEGEND: 5'x15' A.E. indicates 5'x15' Anchor Easement; 12' TOTAL DRAINAGE EASEMENT; 12' TOTAL UTILITY EASEMENT; 12' UTILITY EASEMENT.

- NOTES: 1. There shall be no buildings, structures, trees or shrubs placed in utility or drainage easements. 2. There shall be no surface appurtenances permitted on canal maintenance easements. 3. P.R.M. indicates Permanent Reference Monument. 4. R.C.P. indicates Permanent Control Point. 5. Bearings refer to an assumed meridian of the Range Line, Section 30-47-42. 6. P.B.R. indicates Palm Beach County Records. 7. Utilities, including franchised utilities, power and light and telegraph, water, sewer, cable television, wiring to street lights, and gas shall be installed underground.

SANDALFOOT COVE - 7

Handwritten '30', '227', and '0306-306'.

