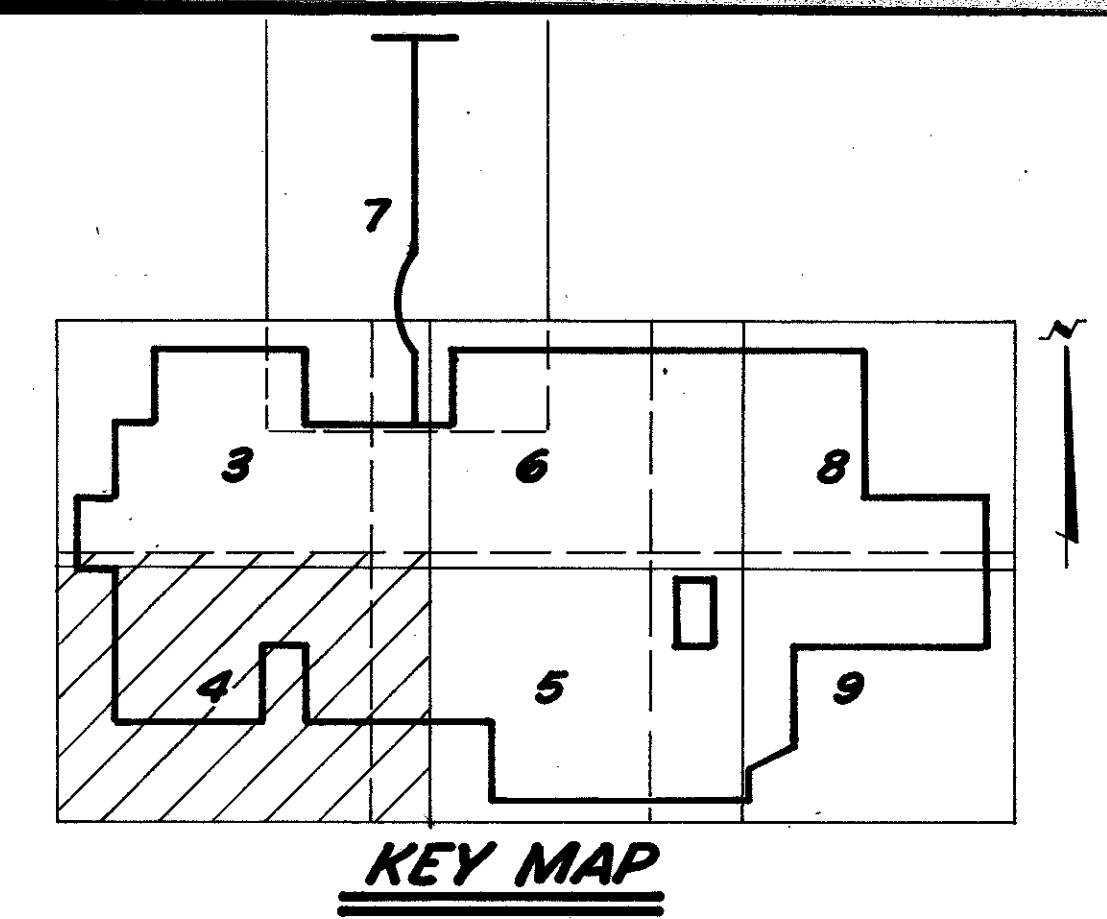


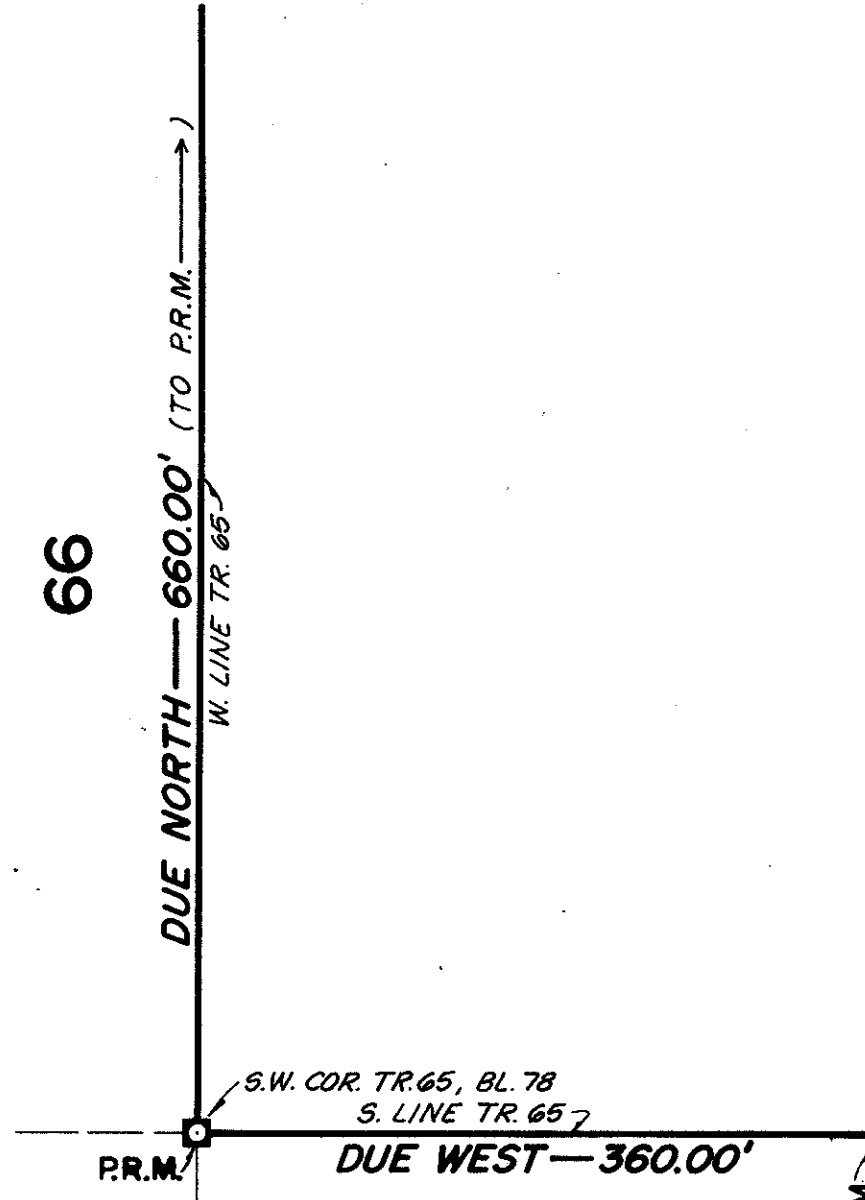
30/248

248

# (A PLANNED UNIT DEVELOPMENT) BOCA LAGO



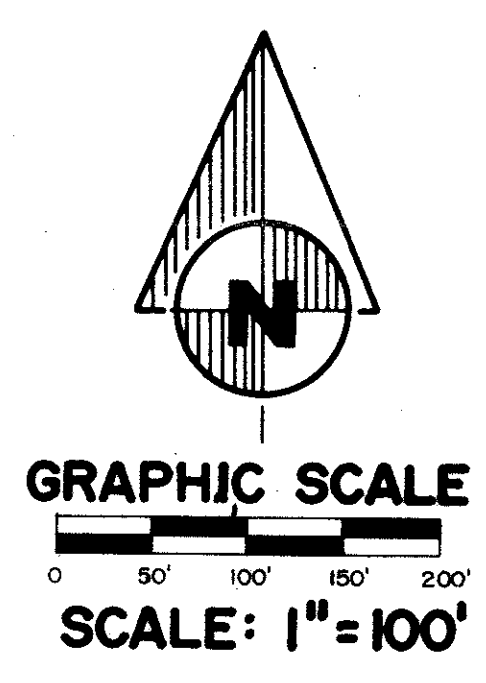
66



FOR AREA NORTH OF THIS SHEET COVERAGE, SEE SHEET 3 OF 9

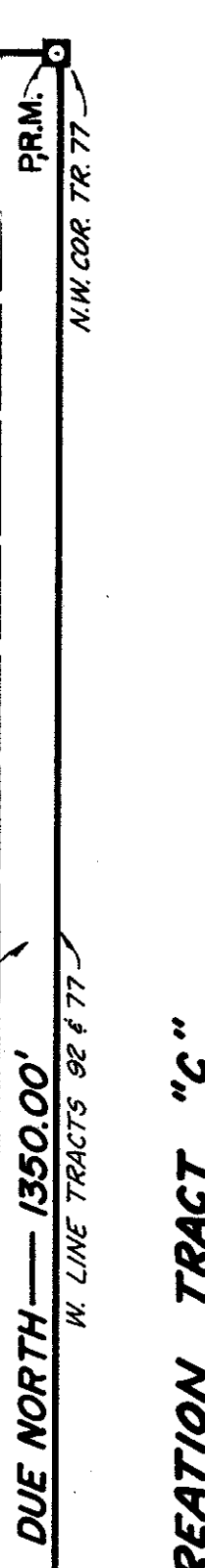
MATCH LINE  
(SEE SHEET 3 OF 9)

RECREATION TRACT "D"



PALM BEACH FARMS CO. PLAT NO. 3  
BL. 78, PB. 2, PG. 45-54

93

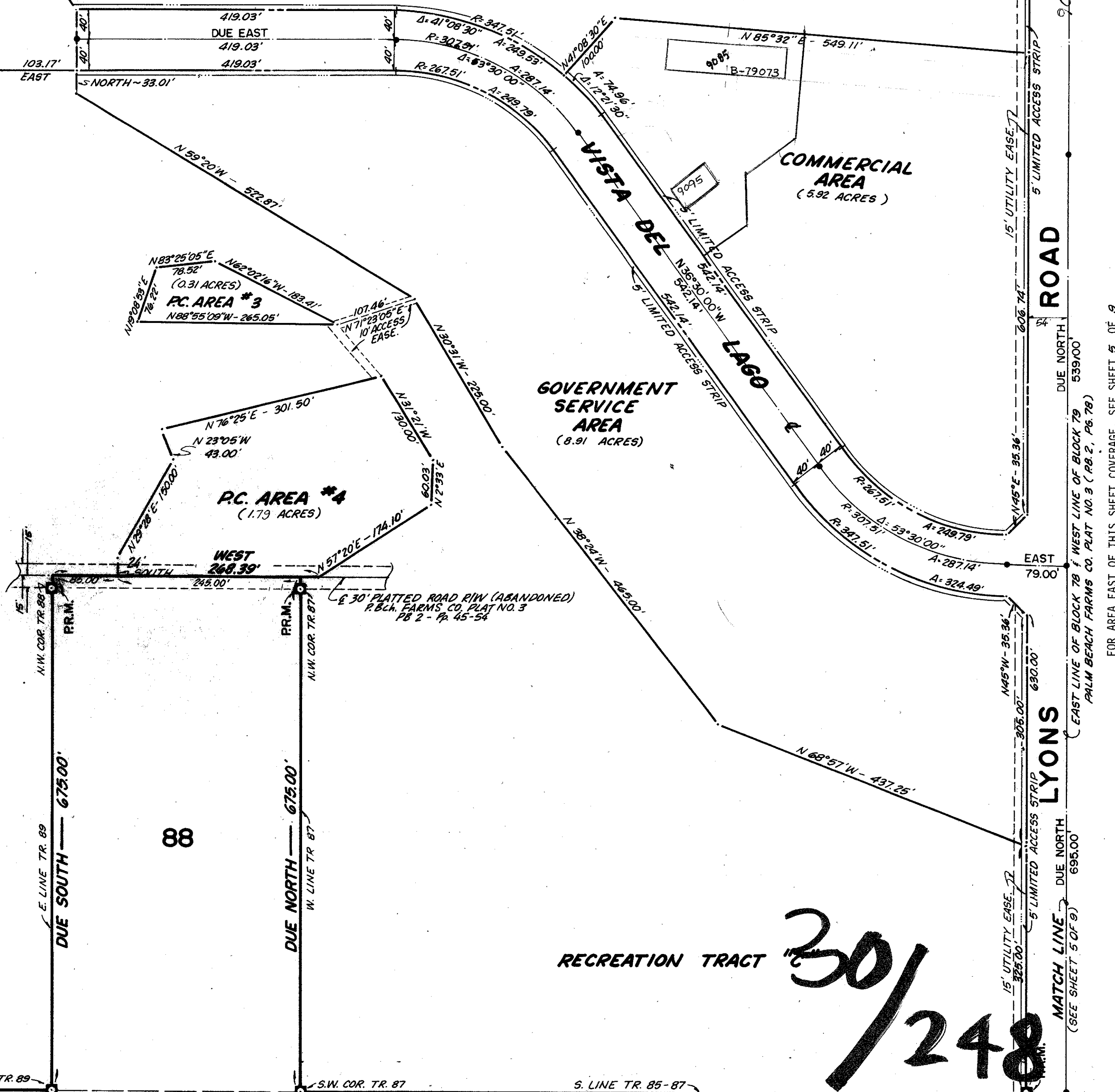


RECREATION TRACT "C"

HOUSING TRACT #2  
(35.75 ACRES)  
TO BE LIMITED IN  
TO HIGH DENSITY

RECREATION TRACT "C"

88



RECREATION TRACT "C"

30/248

DRAWING NUMBER

DRAWING NUMBER

DRAWING NUMBER

105

106

107

108

109

110

111

112

PALM BEACH FARMS CO. PLAT NO. 3  
BL. 78, PB. 2, PG. 45-54

Boca Lago

This instrument was prepared by Robert R. Game of **Osiley-Fotopay, Inc.**, 1028 South Military Trail, West Palm Beach, Florida, 33411, for the firm of CONRAD W. SCHAEFER, Consulting Engineers, West Palm Beach, Florida.

SHEET 4 OF 9

CONRAD W. SCHAEFER CONSULTING ENGINEER  
PALM BEACH COUNTY, FLORIDA