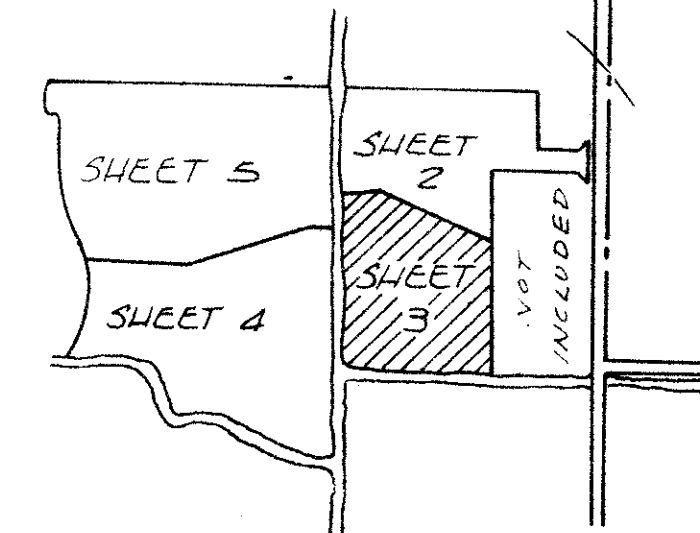


INDIAN SPRING PLAT NO. 1

A PLANNED UNIT DEVELOPMENT
SHEET 3 OF 5

35



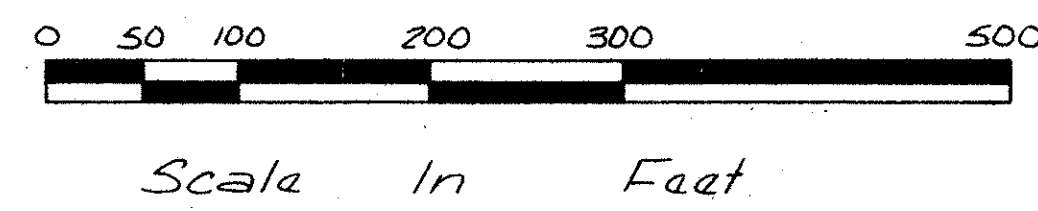
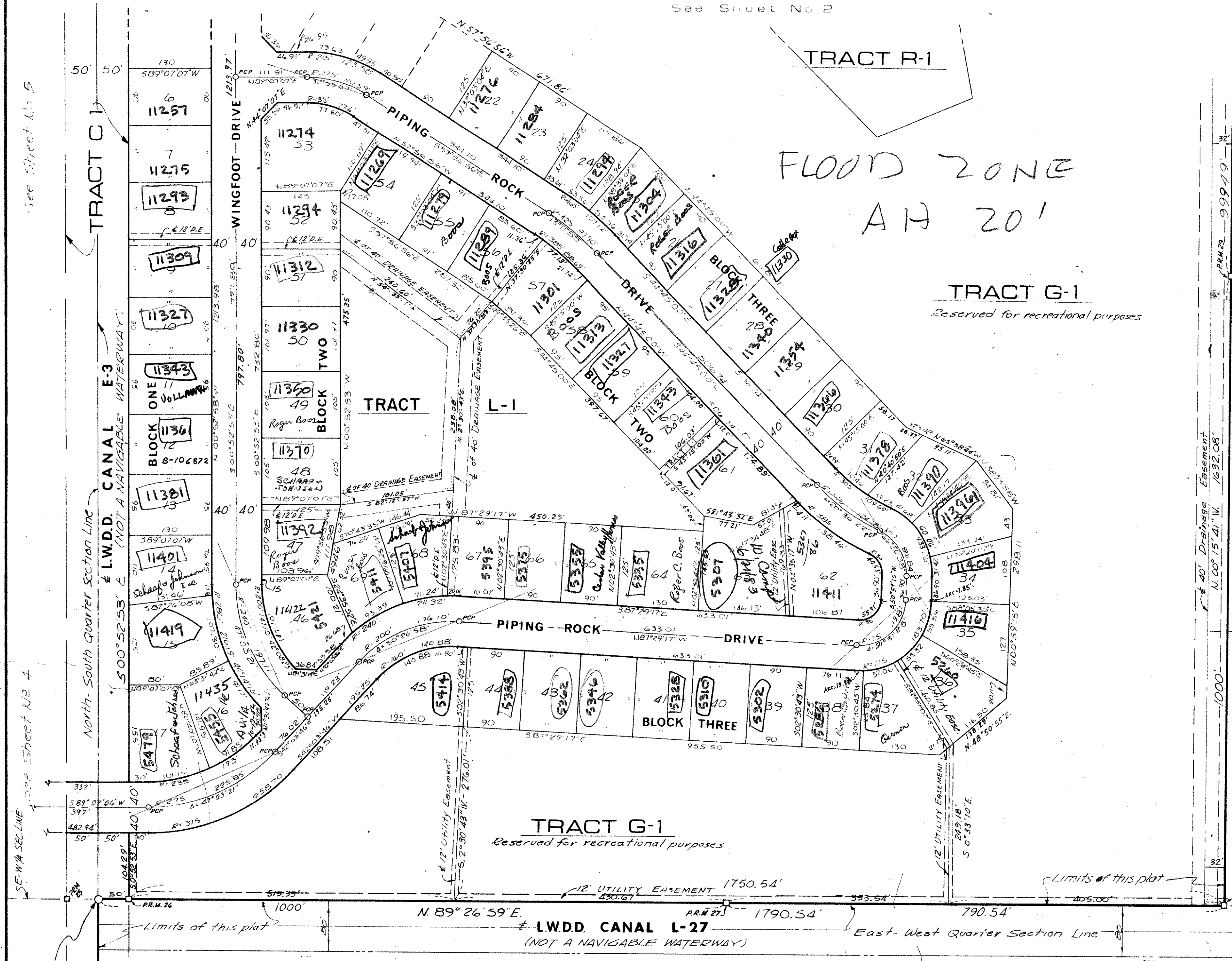
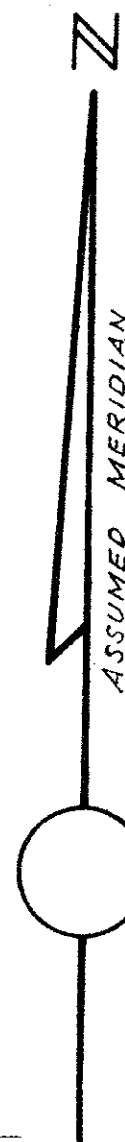
KEY MAP

COORDINATES OF PERMANENT REFERENCE MONUMENTS

PRM NO	COORDINATE VALUES NORTH	EAST
1	20280.740	17546.986
2	20268.470	18547.062
3	20253.743	17348.565
4	20227.538	17248.957
5	20212.808	16049.047
6	20197.072	14767.163
7	20197.550	14037.235
8	20077.521	14636.793
9	20002.421	14711.514
10	19684.431	14711.078
11	19428.222	14767.309
12	18809.099	15053.858
13	18194.474	15091.111
14	17576.934	14891.661
15	17584.610	15690.944
16	17357.284	16100.044
17	17386.528	16187.637
18	17324.090	16471.642
19	17336.289	16596.381
20	17279.321	16704.256
21	17229.641	16915.510
22	17126.385	16982.575
23	17075.554	17153.674
24	17055.734	17297.758
25	17629.955	17288.924
26	17630.915	17388.921
27	17640.039	18338.876
28	17647.631	19129.380
29	18647.621	19124.818
30	19647.101	19120.258
31	19656.640	19897.629
32	19631.757	19922.935
33	19801.755	19922.159
34	19776.642	19897.465
35	19772.370	19549.301

Coordinate values shown are in an assumed system and an assumed meridian

NOT PLATTED



Scale in Feet

0259-000

31/45

INDIAN SPRING PLAT NO. 1

Field Book No. E 38 Pg. 1	ROBERT E. OWEN & ASSOCIATES, INC.	INDIAN SPRING - PLAT No. 1	Job No. 1198
Design L.A. GEO.	ENGINEERS · PLANNERS · SURVEYORS	SECTIONS 34 AND 35	Scale 1"=100'
Drawn by REAL	WEST PALM BEACH, FLORIDA	TWP. 45 S., RGE. 42E	Sheet 3
Checked by WHITE		PALM BEACH COUNTY, FLORIDA	of 5
Filed by T. WHITLEY	Approved Date 1986. 1974	SHEET 3 OF 5	File No. BF-2215

31/45

See Sheet No 2

See Sheet No 4

See Sheet No 4

This instrument prepared by David M. White in the Office of Robert E. Owen and Associates, Inc., 1675 Palm Beach Lakes Blvd., West Palm Beach, Florida 33401