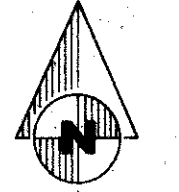


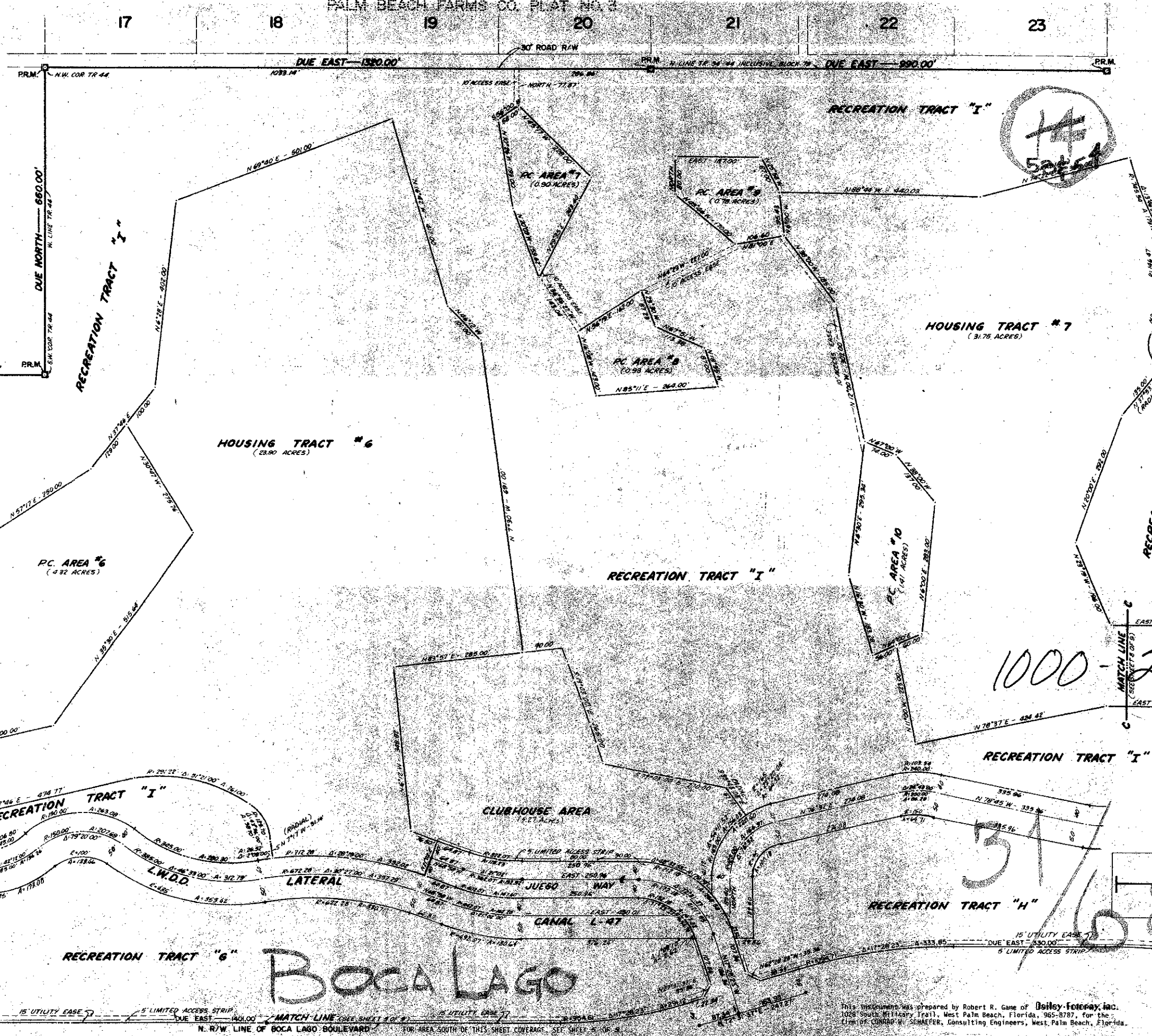
31/68



GRAPHIC SCALE
SCALE: 1" = 100'

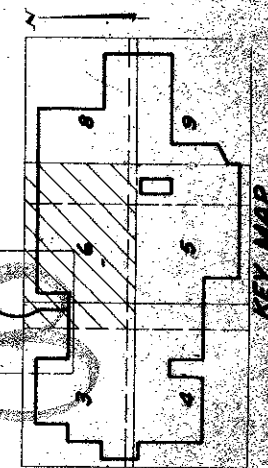
45

FOR AREA NORTH OF THIS SHEET COVERAGE, SEE SHEET 7 OF 9
FOR AREA WEST OF THIS SHEET COVERAGE, SEE SHEET 3 OF 9
FOR AREA SOUTH OF THIS SHEET COVERAGE, SEE SHEET 6 OF 9



NOTE: THIS REPEAT IS FILED TO CLARIFY THE DEDICATORY LANGUAGE IN THE PLAT OF BOCA LAGO, RECORDED IN PLAT 300, PAGE 20, PUBLIC RECORDS OF PALM BEACH COUNTY, FLORIDA, AND THIS REPEAT IS IDENTICAL TO THE PLAT OF BOCA LAGO EXCEPT FOR SHEETS 1 AND 2 HEREOF.
FOR AREA EAST OF THIS SHEET COVERAGE, SEE SHEET 8 OF 9

1000-201



(A PLANNED UNIT DEVELOPMENT)
REPLAT OF BOCA LAGO

Boca Lago

This instrument was prepared by Robert R. Gane of **Boiley-Foresay, Inc.**, 1028 South Wilfrady Trail, West Palm Beach, Florida, 335-8787, for the **CLUB OF CONRAD W. SCHAEFER, Consulting Engineers**, West Palm Beach, Florida.

SHEET 8 OF 9
CONRAD W. SCHAEFER CONSULTING ENGINEERS
PALM BEACH, FLORIDA