

SOUTH SHORE NO. 2A of WELLINGTON

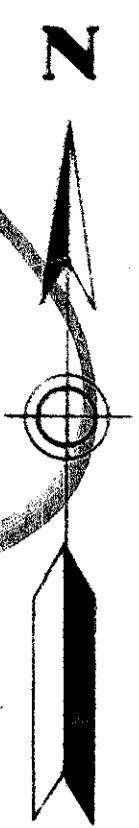
P. U. D.
IN PART OF SECTION II, TWP. 44 S., RGE. 41 E.
PALM BEACH COUNTY, FLORIDA
IN 4 SHEETS SHEET NO. 4



SCALE IN FEET
SCALE 1" = 100'

GEE & JENSON
CONSULTING ENGINEERS, INC.
WEST PALM BEACH, FLORIDA
FEBRUARY 1975

62



119

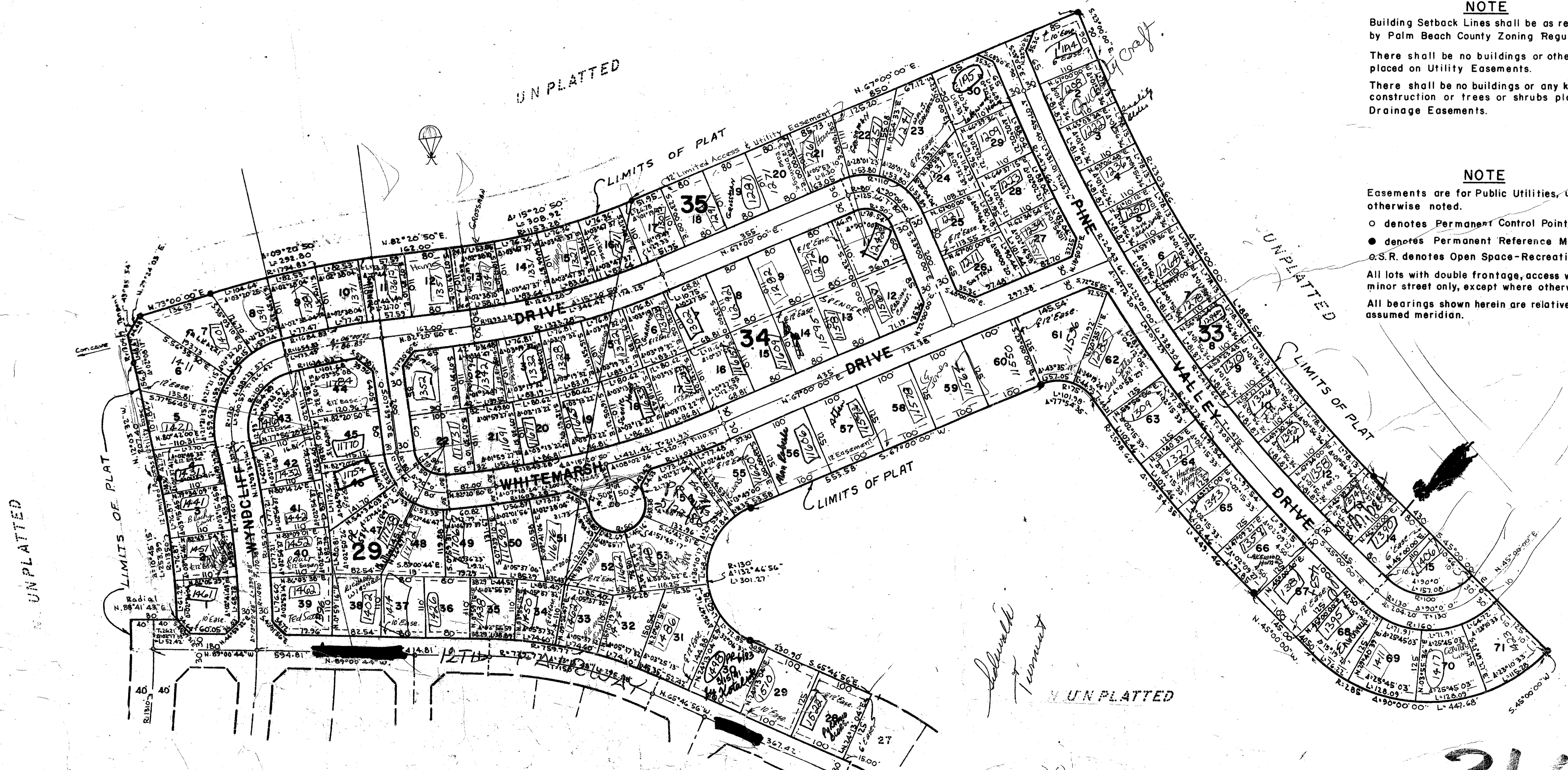
STATE OF FLORIDA
COUNTY OF PALM BEACH
This Plat was filed for record at _____ M.
this _____ day of _____, 1975,
and duly recorded in Plat Book No. _____
on page _____
JOHN B. DUNKLE, Clerk Circuit Court.
By _____, D.C.

NOTE

Building Setback Lines shall be as required by Palm Beach County Zoning Regulations.
There shall be no buildings or other structures placed on Utility Easements.
There shall be no buildings or any kind of construction or trees or shrubs placed on Drainage Easements.

NOTE

Easements are for Public Utilities, unless otherwise noted.
○ denotes Permanent Control Point.
● denotes Permanent Reference Monument.
O.S.R. denotes Open Space-Recreation
All lots with double frontage, access will be on a minor street only, except where otherwise noted.
All bearings shown herein are relative to an assumed meridian.



SHEET NO. 3

SOUTH SHORE NO. 2A

31/119
0332-876