

GREENVIEW SHORES NO. 2 OF WELLINGTON - (P.U.D.)

IN PART OF SECTION 9, TWP. 44S., RGE. 41E.

PALM BEACH COUNTY, FLORIDA
IN 17 SHEETS SHEET NO. 7

SCALE IN FEET SCALE 1" = 100'

GEE & JENSON
CONSULTING ENGINEERS, INC.
WEST PALM BEACH, FLORIDA
FEBRUARY 1974

126

31

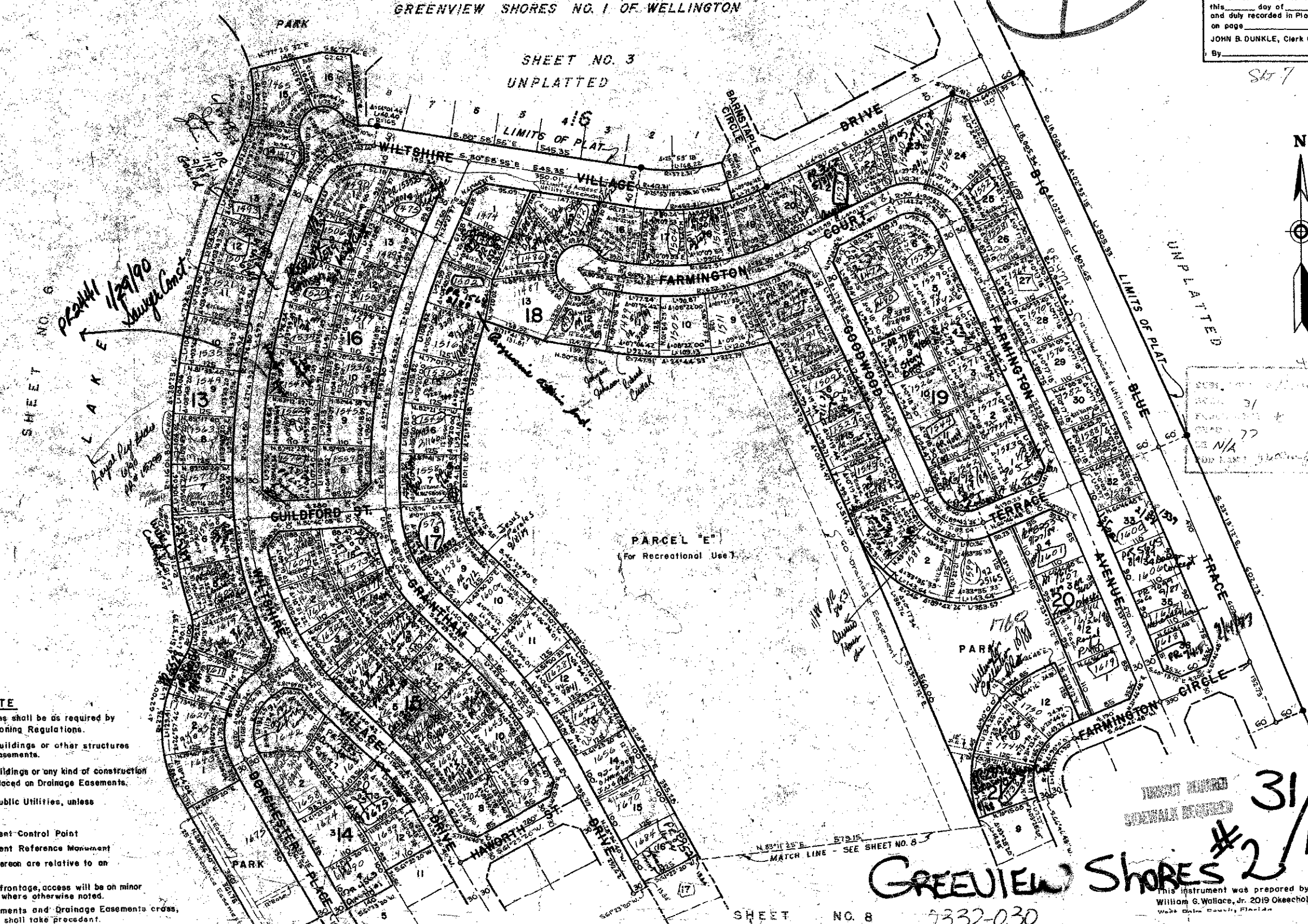
77

STATE OF FLORIDA
COUNTY OF PALM BEACH
This Plat was filed for record at _____ M.
this _____ day of _____, 197____
and duly recorded in Plat Book No. _____
on page _____
JOHN B. DUNKLE, Clerk Circuit Court
By _____, D.C.

SK 7

GREENVIEW SHORES NO. 1 OF WELLINGTON

SHEET NO. 3
UNPLATTED



SHEET NO. 6

PROV. 1/29/90
Survey Const.

Asper Ref. Area
1/29/90

NOTE

Building Setback Lines shall be as required by Palm Beach County Zoning Regulations.
There shall be no buildings or other structures placed on Utility Easements.
There shall be no buildings or any kind of construction or trees or shrubs placed on Drainage Easements.
Easements are for Public Utilities, unless otherwise noted.
○ denotes Permanent Control Point
● denotes Permanent Reference Monument
All bearings shown hereon are relative to an assumed meridian.
All lots with double frontage, access will be on minor street only, except where otherwise noted.
Where Utility Easements and Drainage Easements cross, Drainage Easements shall take precedent.

31
77
N/A

GREENVIEW SHORES #2/126

SHEET NO. 8 3332-030