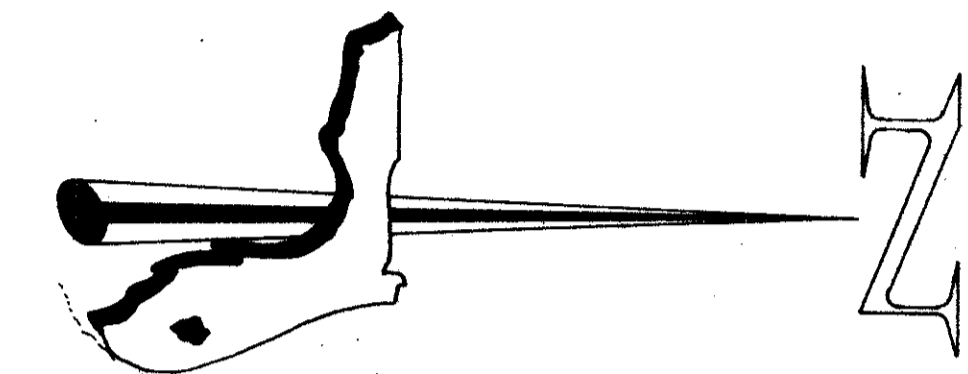
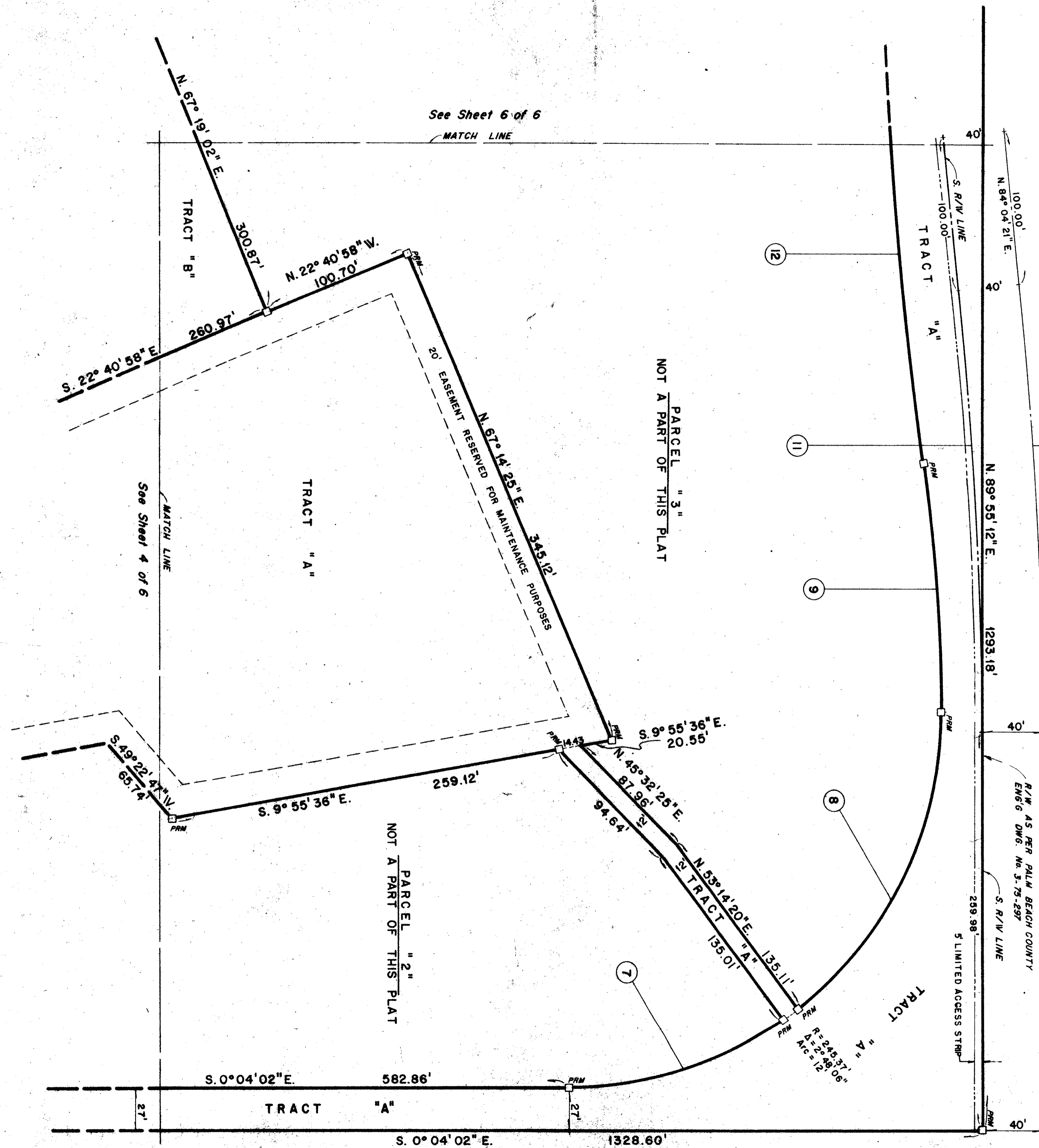


A PLANNED UNIT DEVELOPMENT
THE TENNIS CLUB OF PALM BEACH, PLAT NO. 2



- NOTES**
1. NO BUILDING OR ANY KIND OF CONSTRUCTION OR TREES SHALL BE PLACED WITHIN EASEMENTS.
 2. DRAINAGE EASEMENT TAKES PRECEDENCE OVER UTILITY EASEMENTS.
 3. MAINTENANCE ACCESS RIGHTS ARE GRANTED OVER ALL TRACTS SHOWN HEREON FOR THE PURPOSE OF MAINTENANCE OF UTILITIES.

31

- LEGEND**
- D.E. INDICATES 12' DRAINAGE EASEMENT
 - S.S. INDICATES 12' SANITARY SEWER EASEMENT
 - W. INDICATES 12' WATER EASEMENT
 - PCP INDICATES PERMANENT CONTROL POINT
 - PRM INDICATES PERMANENT REFERENCE MONUMENT

CURVE DATA				
NO.	R	T	ARC	L. CHORD
7	245.37'	78.05'	151.14'	148.76'
8	245.37'	119.46'	222.34'	214.81'
9	1160.17'	81.31'	162.35'	162.22'
10	2864.72'	146.31'	292.37'	292.24'
11	2824.72'	144.27'	288.29'	288.16'
12	2931.79'	205.47'	410.26'	409.93'

BEARING DATUM:
 ALL BEARINGS SHOWN HEREON ARE RELATED TO AN ASSUMED NORTH ALONG THE WEST LINE OF THE NW 1/4 OF SEC. 24, T43 S, R 42 E.

31/141

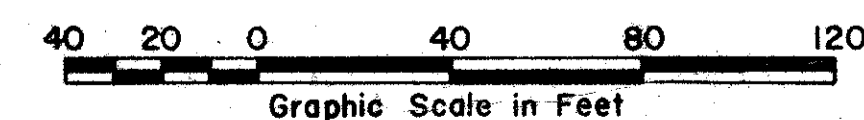
0317-302

Sheet 5
 of 6

FLORIDA SURVEYING & MAPPING, INC.
 REGISTERED LAND SURVEYORS
 WEST PALM BEACH, FLORIDA 33401

SCALE 1" = 40'	REVISIONS	BY	DATE
DATE: May 11, 1975			
BY: C.M.G. R.S.			
BY: R. Saladrigas			

TITLE: THE TENNIS CLUB OF PALM BEACH, PLAT NO. 2



TENNIS CLUB OF P. B. ACREAGE