

FOX TRAIL

IN SECTIONS 26, 35, AND 36,
TOWNSHIP 43 SOUTH, RANGE 40 EAST
PALM BEACH COUNTY, FLORIDA
JULY 1975

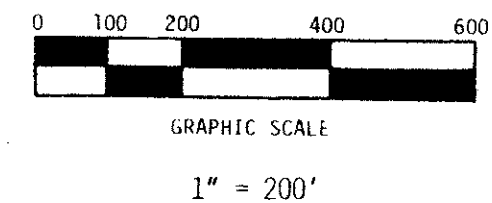
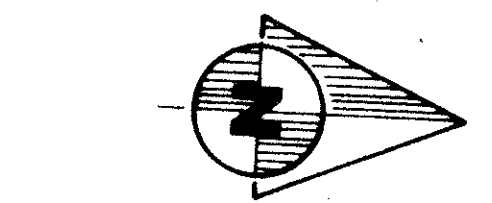
CONRAD W. SCHAEFER CONSULTING ENGINEERS, INC.
PALM BEACH COUNTY, FLORIDA

STATE OF FLORIDA
COUNTY OF PALM BEACH

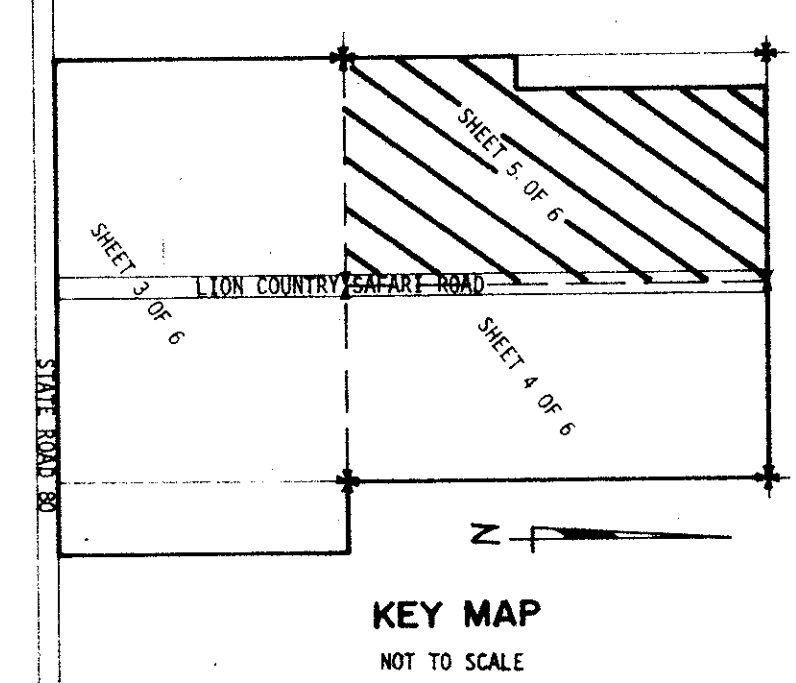
THIS PLAT WAS FILED FOR RECORD
AT _____ M. THIS _____ DAY OF _____
19_____, AND DULY
RECORDED IN PLAT BOOK NO. _____ ON
PAGE _____

JOHN B. DUNKLE, CLERK
CIRCUIT COURT

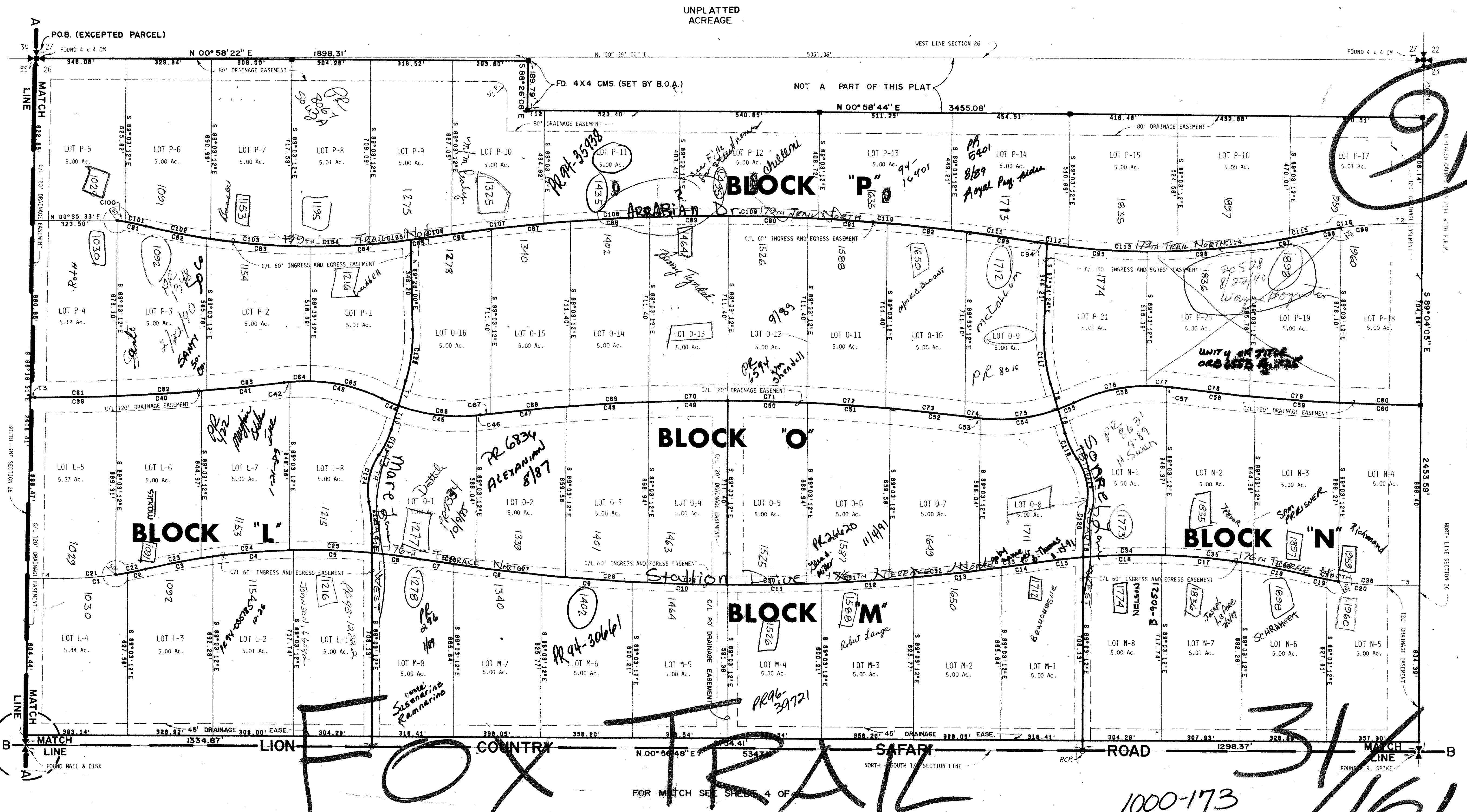
BY _____, D.C.



161



KEY MAP
NOT TO SCALE



FOR MATCH SEE SHEET 3 OF 6

SEE DETAIL SHEET 4 OF 6

FOR MATCH SEE SHEET 4 OF 6

1000-173
31/161

THIS INSTRUMENT WAS PREPARED BY ROBERT J. WHITTON OF DATLEY-FOTOMY, INC., LAND PLANNERS, SURVEYORS AND ENGINEERS, 1026 SOUTH MILITARY TRAIL, WEST PALM BEACH, FLORIDA. PHONE 963-8787.

NOTE: ALL LOTS SHOWN ARE IN EXCESS OF 217,800 SQUARE FEET OR 5.00001 ACRES.

NOTE: FOR CURVE DATA TABLES, (C NO.S) AND DISTANCE OR TANGENT TABLES, (T NO.S), SEE SHEET 6 OF 6 AND CONSULT THE APPROPRIATE LISTING BY SHEET NUMBER.