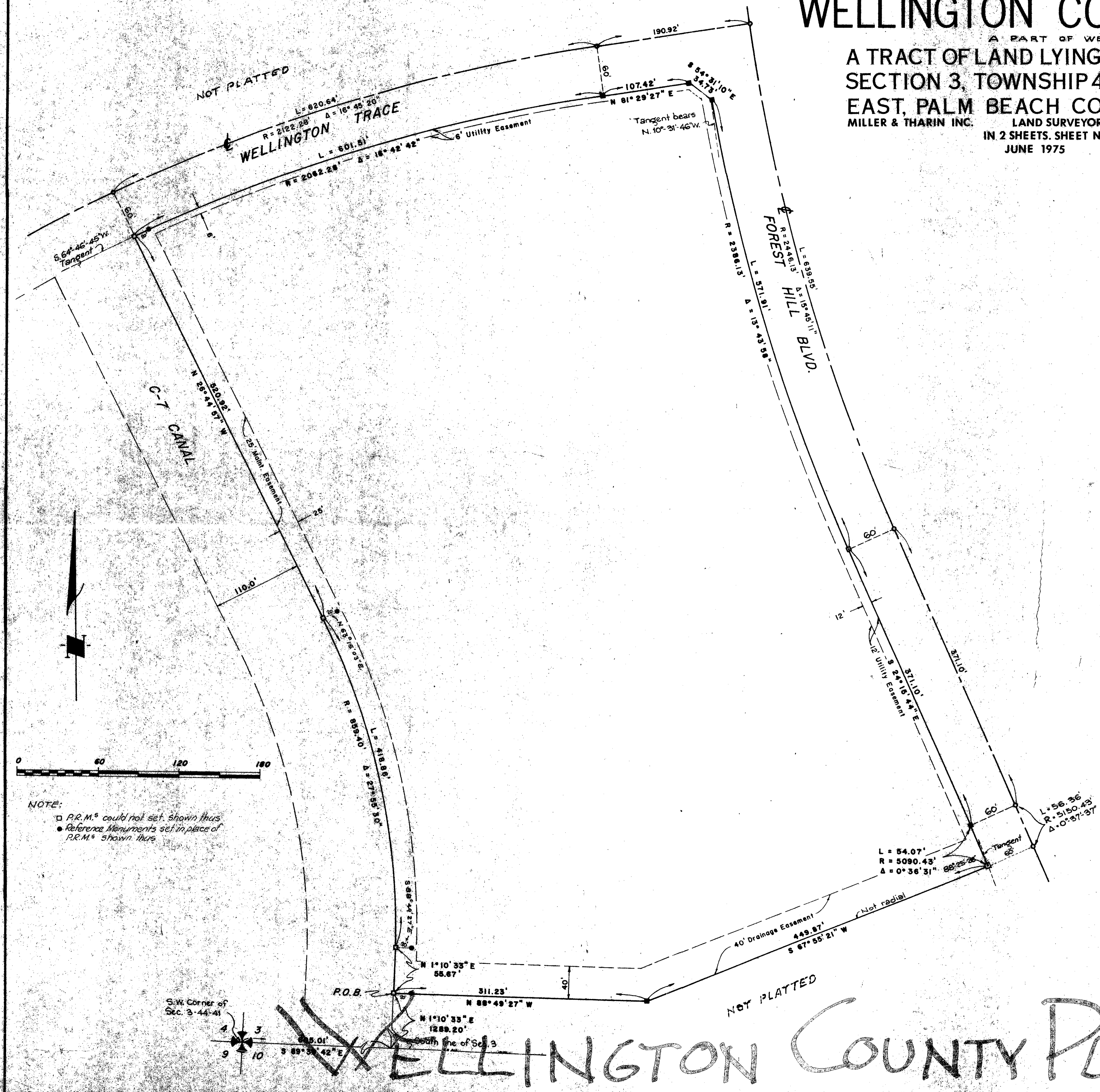


# WELLINGTON COUNTRY PLAZA

# 183

A PART OF WELLINGTON P.U.D.  
 A TRACT OF LAND LYING AND BEING IN PART OF  
 SECTION 3, TOWNSHIP 44 SOUTH, RANGE 41  
 EAST, PALM BEACH COUNTY, FLORIDA.  
 MILLER & THARIN INC. LAND SURVEYORS WEST PALM BEACH, FLORIDA  
 IN 2 SHEETS. SHEET NO. 2  
 JUNE 1975

STATE OF FLORIDA )  
 COUNTY OF PALM BEACH )  
 This plat was filed for record  
 at \_\_\_\_\_ M. this \_\_\_\_\_ day of  
 \_\_\_\_\_, 19 \_\_\_\_\_, and duly  
 recorded in Plat Book No. \_\_\_\_\_  
 on Page \_\_\_\_\_  
 JOHN B. GUNKLE, Clerk Circuit  
 Court  
 By: \_\_\_\_\_ D. C.



Notes

1. ALL P.R.M.'s BEAR THE REGISTRATION NUMBER "1457" SHOWN THUS EI P.R.M.
2. PERMANENT CONTROL POINTS SHOWN THUS O P.C.P.
3. THE BEARINGS SHOWN HEREON ARE BASED ON AN ASSUMED BEARING ALONG THE SOUTH LINE OF SECTION 3, OF S.89°38'42"E.
4. BUILDING SETBACK LINES SHALL BE AS REQUIRED BY PALM BEACH COUNTY ZONING REGULATIONS.
5. THERE SHALL BE NO BUILDING OR ANY KIND OF CONSTRUCTION OR TREES OR SHRUBS PLACED ON EASEMENTS.

62

0332-001

31/183

# WELLINGTON COUNTRY PLAZA

THIS INSTRUMENT WAS PREPARED BY  
 DOUGLAS H. MILLER  
 417 So. Military Trail  
 West Palm Beach, Florida