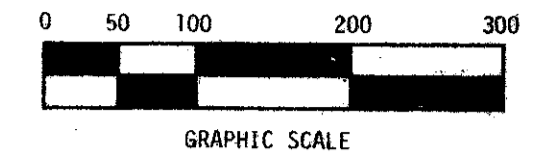


(A PLANNED UNIT DEVELOPMENT)
BANYAN LAKES

BEING A REPLAT OF TRACTS 3, 4, 13, 14, 18, 19, 20, 29, 30, 31, AND A PORTION OF TRACTS 15, 16, 17, AND 32, ALL IN BLOCK 16
OF PALM BEACH FARMS COMPANY PLAT NO. 3, PLAT BOOK 2, PAGE 47, PUBLIC RECORDS OF PALM BEACH COUNTY, FLORIDA,
ALL LYING WITHIN SECTION 8, TOWNSHIP 44 SOUTH, RANGE 42 EAST, PALM BEACH COUNTY, FLORIDA.

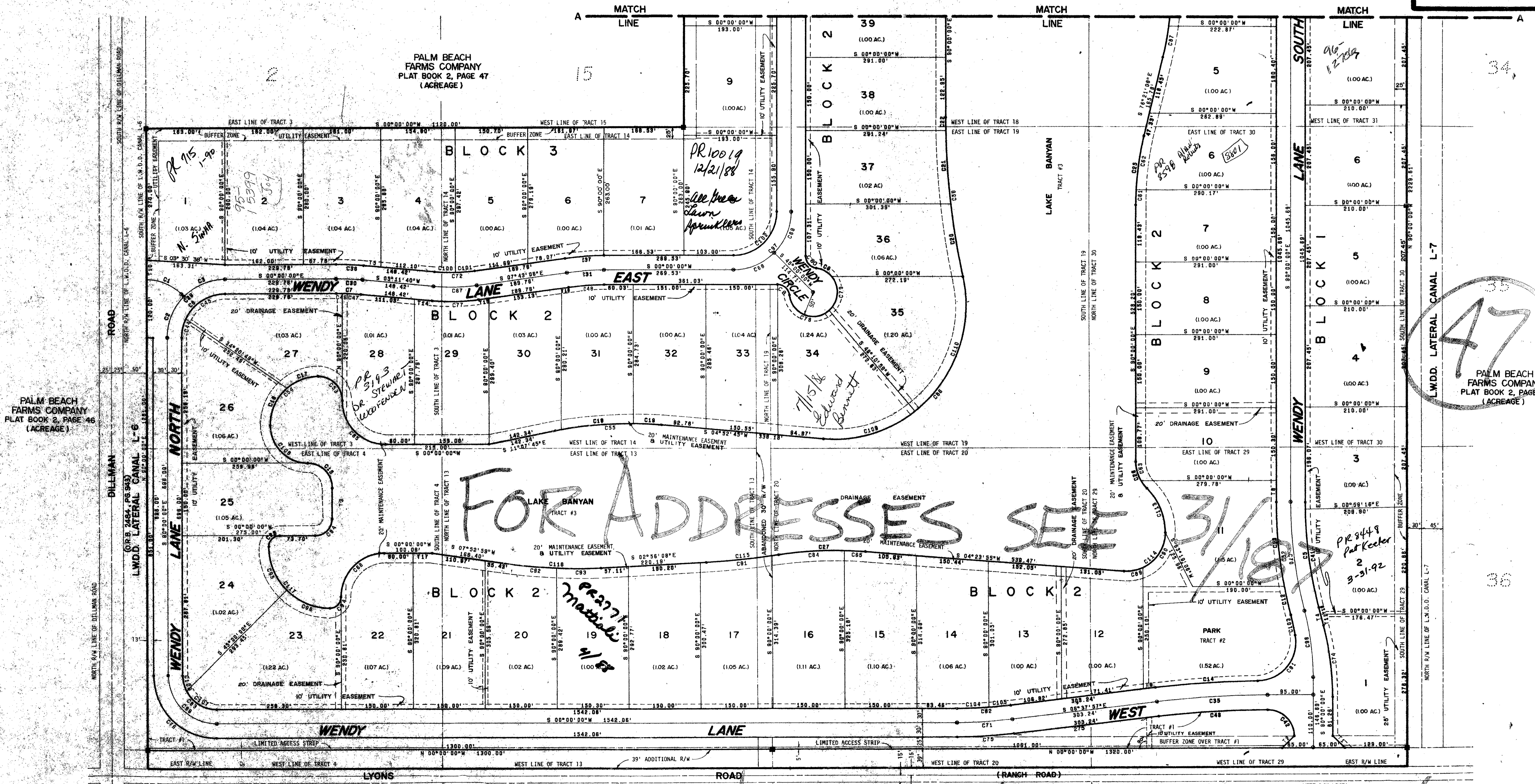
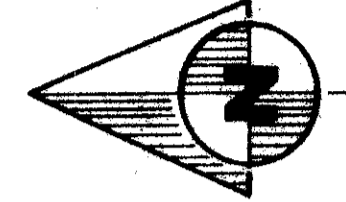
JULY, 1975



1" = 100'

THIS INSTRUMENT WAS PREPARED BY ROBERT J. WHIDDEN OF DAILEY-FOTORNY, INC., LAND PLANNERS, SURVEYORS,
AND ENGINEERS, 1028 SOUTH MILITARY TRAIL, WEST PALM BEACH, FLORIDA. PHONE 965-8787.

SEE SHEET 4 OF 4 FOR MATCH



PALM BEACH FARMS COMPANY
PLAT BOOK 2, PAGE 46
(ACREAGE)

BANYAN LAKES

PALM BEACH FARMS COMPANY
PLAT BOOK 2, PAGE 47
(BANYAN GOLF CLUB)

NOTE: FOR TABULATION OF ALL CURVE DATA (C NOS)
SEE CURVE TABLE ON SHEET 4 OF 4.
FOR TABULATION OF ALL MISSING DISTANCE DATA
(T NOS), SEE TANGENT TABLE ON SHEET 4 OF 4.

DWN. WALDO	DATE 2-18-75
CHK.	DWG. NO. 3600-D
REVISIONS:	SCALE 1" = 100'
	SHEET 3 OF 4

Dailey-Fotorny, inc.
land surveyors, planners, engineers
1028 S. Military Trail, West Palm Beach, Florida 33411
Phone 965-8787