

PLAT NO. II-B - LE CHALET (P.U.D.)

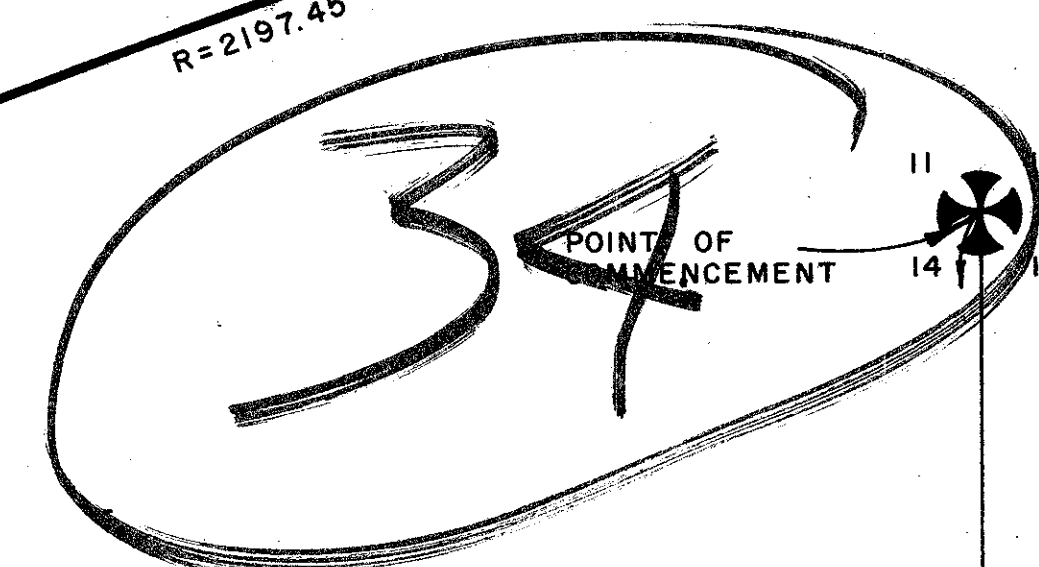
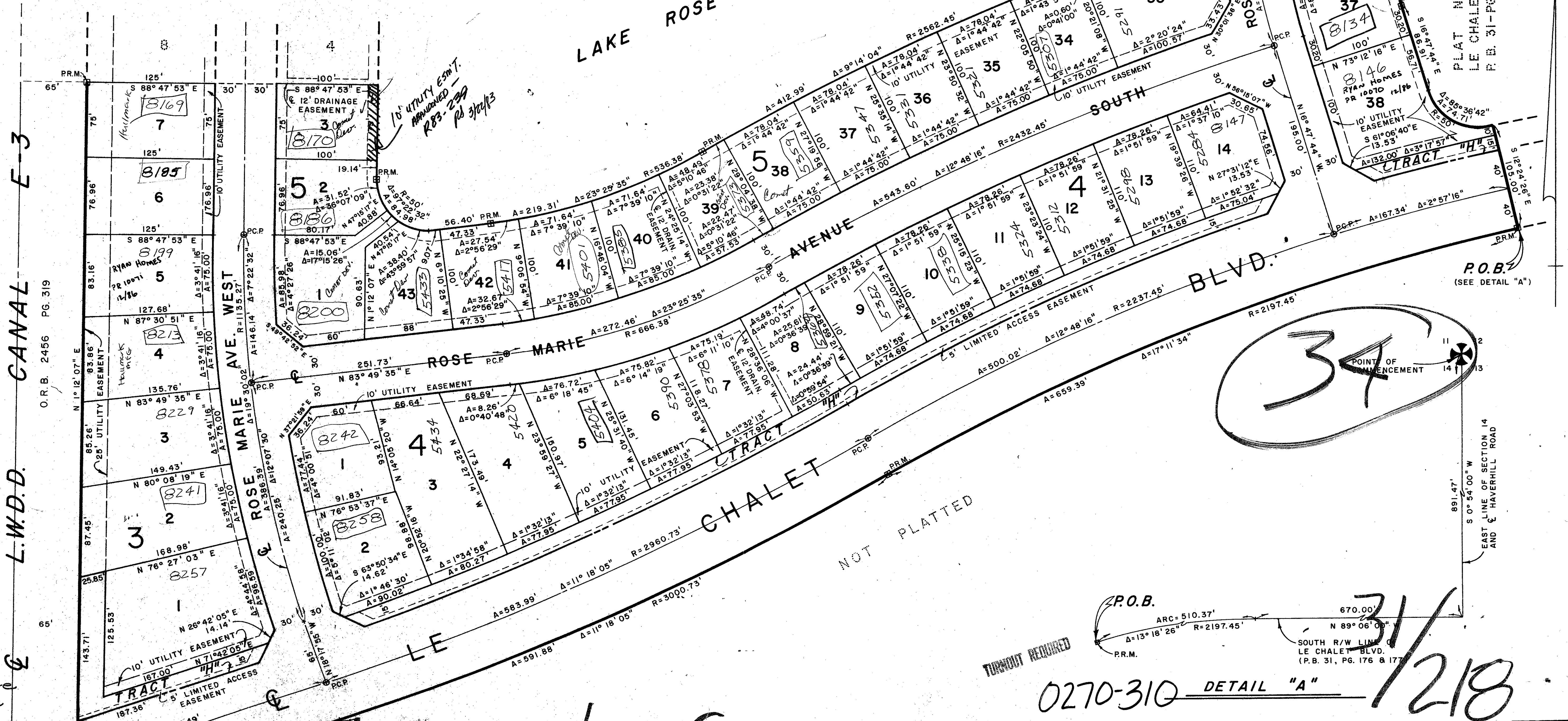
IN SECTION 14, TOWNSHIP 45 SOUTH, RANGE 42 EAST

PALM BEACH COUNTY, FLORIDA
IN 3 SHEETS SHEET NO. 2

STATE OF FLORIDA }
COUNTY OF PALM BEACH }
This Plat was filed for record at _____ M.
this _____ day of _____
19____, and duly recorded in Plat Book No. _____
on page _____
JOHN B. DUNKLE, Clerk Circuit Court
By _____, D. C.

SEE SHEET NO. 3

TRACT "G"
LAKE ROSE MARIE

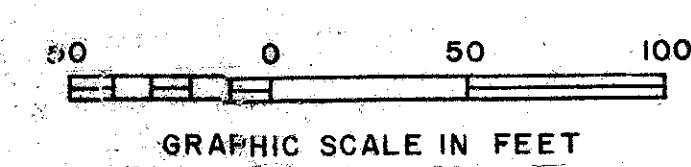


See back

PLAT No. II-B - LE CHALET

TURNOUT REQUIRED

THIS INSTRUMENT WAS PREPARED BY R. SHEPARD IN THE OFFICE OF



0270-310 DETAIL "A" / 218

ROSSI AND MALAVASI ENGINEERS, INC. WEST PALM BEACH, FLORIDA		PLAT NO. II-B LE CHALET (P.U.D.) IN 3 SHEETS SHEET NO. 2	
Date	DECEMBER, 1975	Designed	R. SHEPARD
Drawn	R. ANDERSON	Scale	1" = 50'
Approved		Job No.	4201-74
		File No.	S-1085-000

EAST LINE OF SECTION 14
AND E HAVERHILL ROAD