

# PLAT NO. II-B - LE CHALET (P.U.D.)

IN SECTION 14, TOWNSHIP 45 SOUTH, RANGE 42 EAST

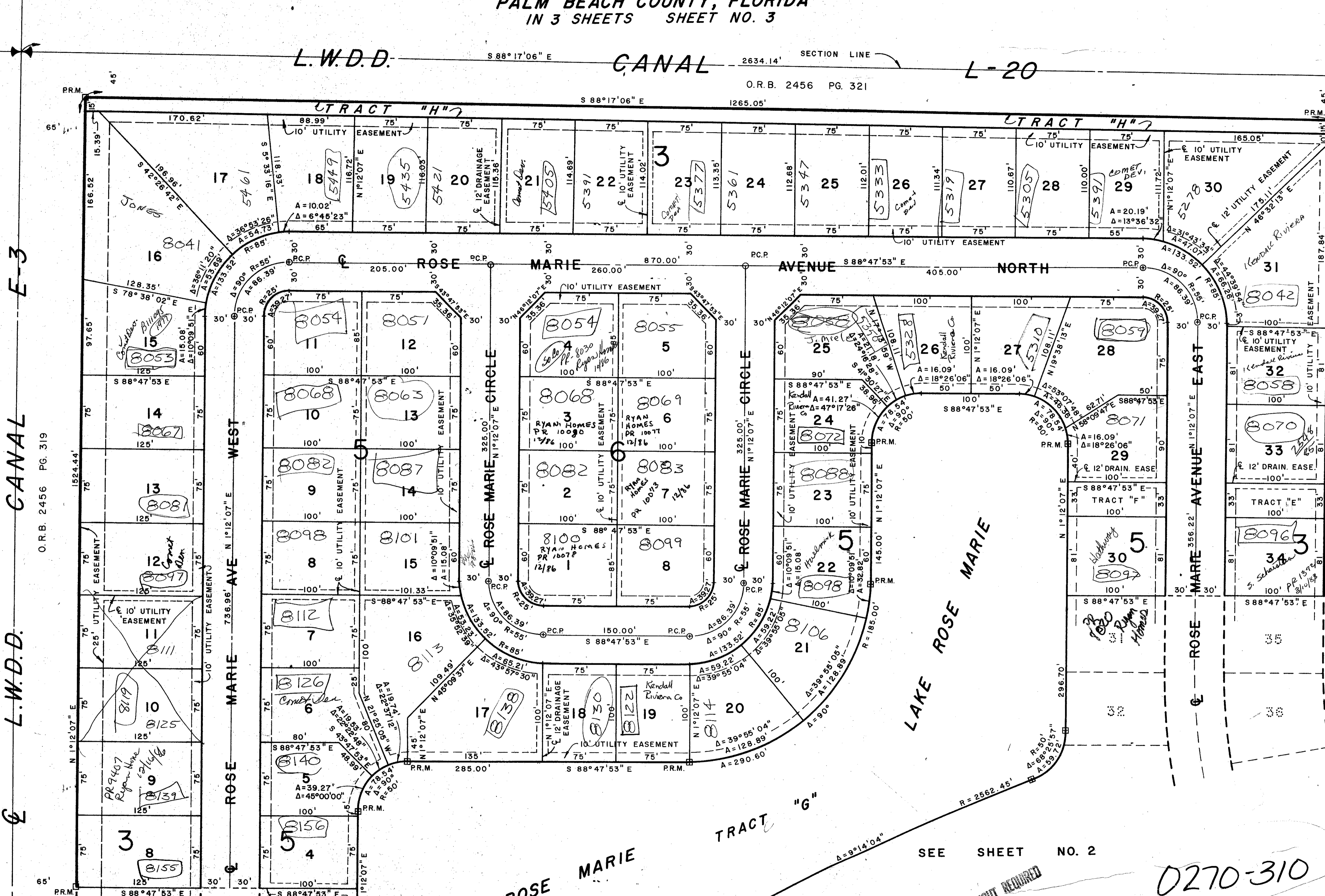
PALM BEACH COUNTY, FLORIDA  
IN 3 SHEETS SHEET NO. 3

# 219

STATE OF FLORIDA }  
COUNTY OF PALM BEACH }  
This Plat was filed for record at \_\_\_\_\_ M.  
this \_\_\_\_\_ day of \_\_\_\_\_  
19 \_\_\_\_\_, and duly recorded in Plat Book No. \_\_\_\_\_  
on page \_\_\_\_\_  
JOHN B. DUNKLE, Clerk Circuit Court  
By \_\_\_\_\_, D. C.

L.W.D.D. S 88° 17' 06" E CANAL 2634.14' SECTION LINE L-20

O.R.B. 2456 PG. 321



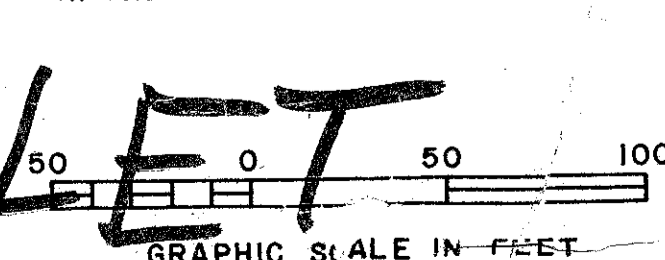
CANAL E-3

L.W.D.D.

O.R.B. 2456 PG. 319

# PLAT NO. II-B - LE CHALET

THIS INSTRUMENT WAS PREPARED BY  
R. SHEPARD IN THE OFFICE OF



SEE SHEET NO. 2

TOWNLOT REQUIRED

0270-310

31/2/19

ROSSI AND MALAVASI ENGINEERS, INC. WEST PALM BEACH, FLORIDA		PLAT NO. II-B LE CHALET (P.U.D.) IN 3 SHEETS SHEET NO. 3					
Date	DECEMBER, 1975	Designed	R. SHEPARD	Scale	1" = 60'	Sheet	
Drawn	R. ANDERSON	Job No.	4201-74				
Checked		File No.	S-1085-000				

PLAT NO. II-A  
LE CHALET (P.U.D.)  
P.B. 31 - PG. 176 & 177

