

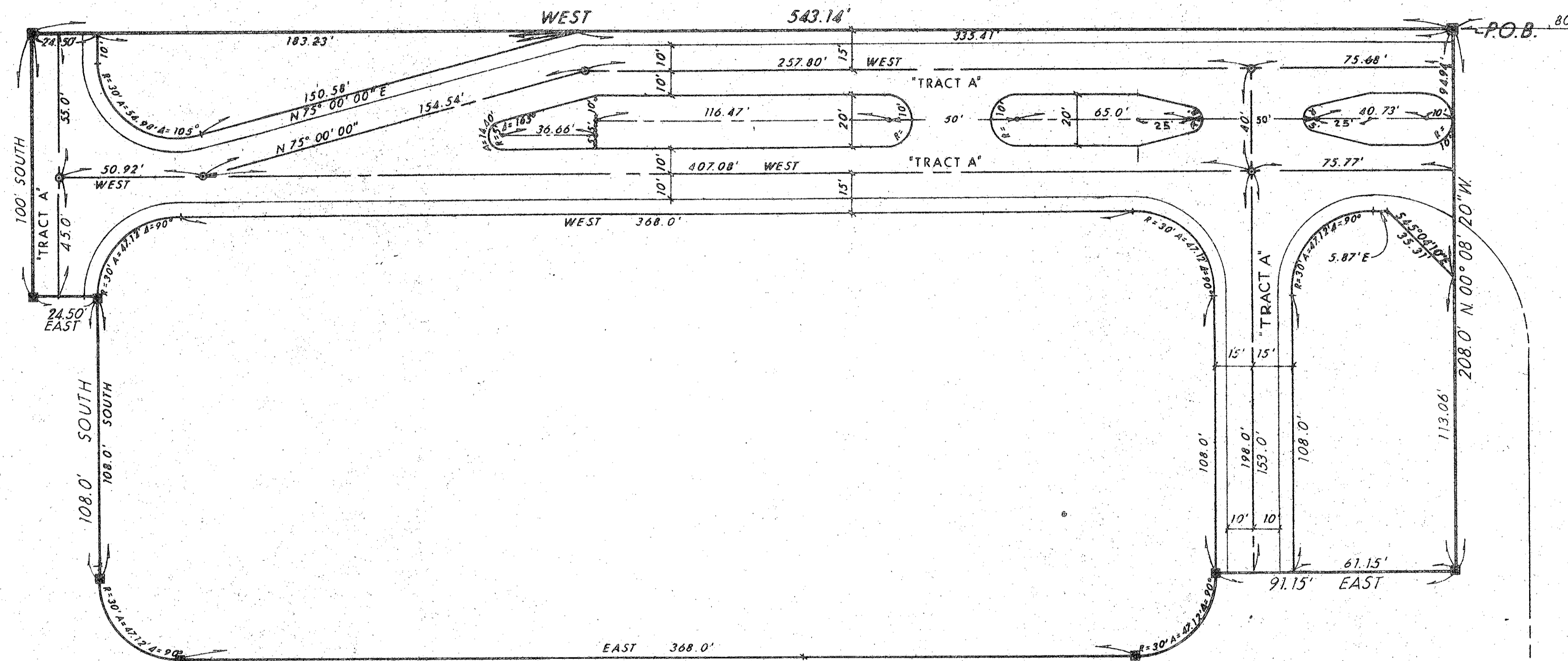
SHALOM MEMORIAL PARK

245

STATE OF FLORIDA  
COUNTY OF PALM BEACH

NORTHEAST CORNER  
OF  
SHALOM MEMORIAL  
PARK  
PLAT BOOK: 31  
PAGE: 194-195

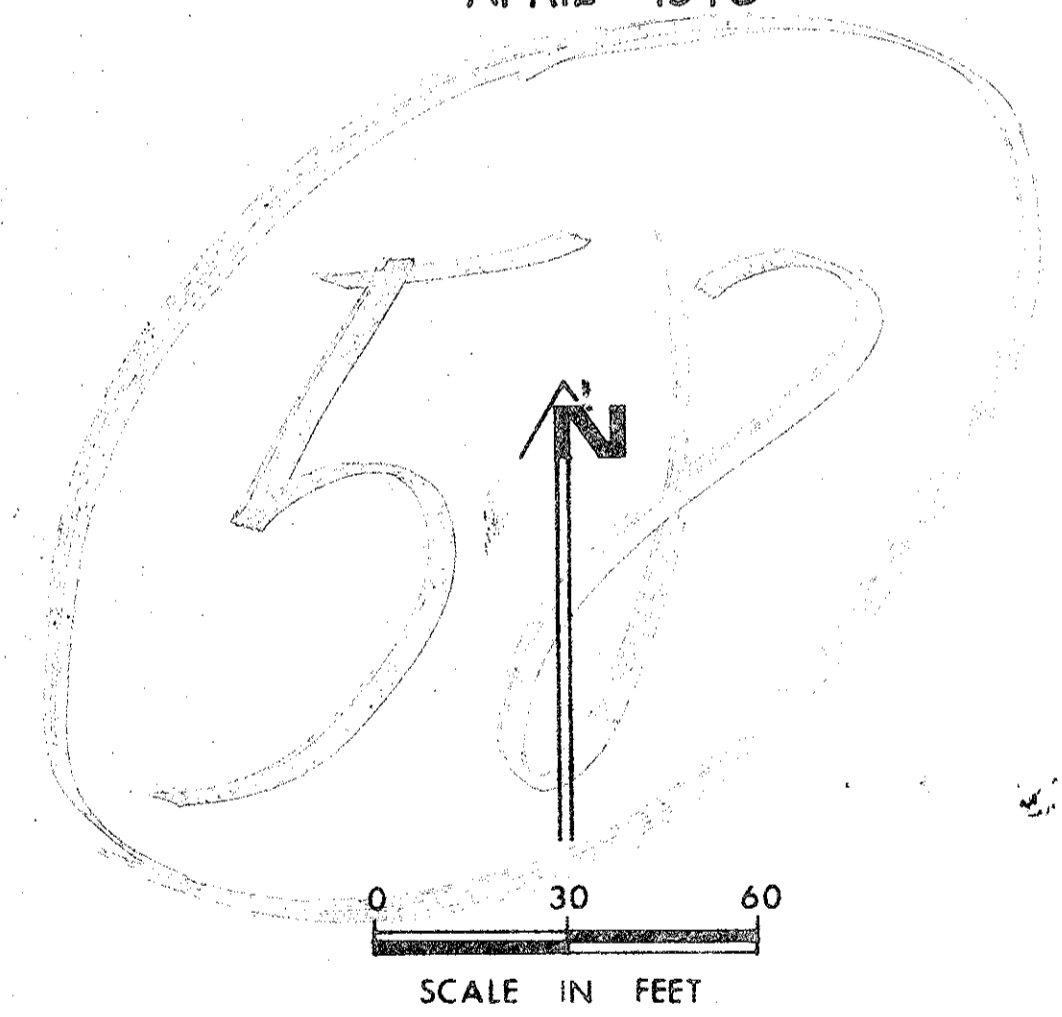
THIS PLAT WAS FILED  
FOR RECORD AT \_\_\_\_\_ M,  
THIS \_\_\_\_\_ DAY OF \_\_\_\_\_  
19\_\_\_\_, AND DULY  
RECORDED IN PLAT  
BOOK NO. \_\_\_\_\_ ON  
PAGE \_\_\_\_\_ JOHN B.  
DUNKLE, CLERK OF THE  
CIRCUIT COURT BY \_\_\_\_\_, D.C.



GARDEN OF RUEBEN

A REPLAT OF A PORTION OF  
'SHALOM MEMORIAL PARK' IN  
SECTION 14, TOWNSHIP 42  
SOUTH, RANGE 41 EAST, PALM  
BEACH COUNTY, FLORIDA  
PLAT BOOK 31, PAGE 194-195

APRIL 1976



NOTE:  
THE BEARINGS AS STATED HEREON, AND SHOWN  
HEREIN, ARE BASED ON THE BEARINGS AS  
SHOWN ON SAID PLAT OF "SHALOM MEMORIAL  
PARK" PLAT BOOK: 31 PAGE: 194-195

GARDEN OF RUEBEN

31/245

1000-189

SHALOM MEMORIAL PARK