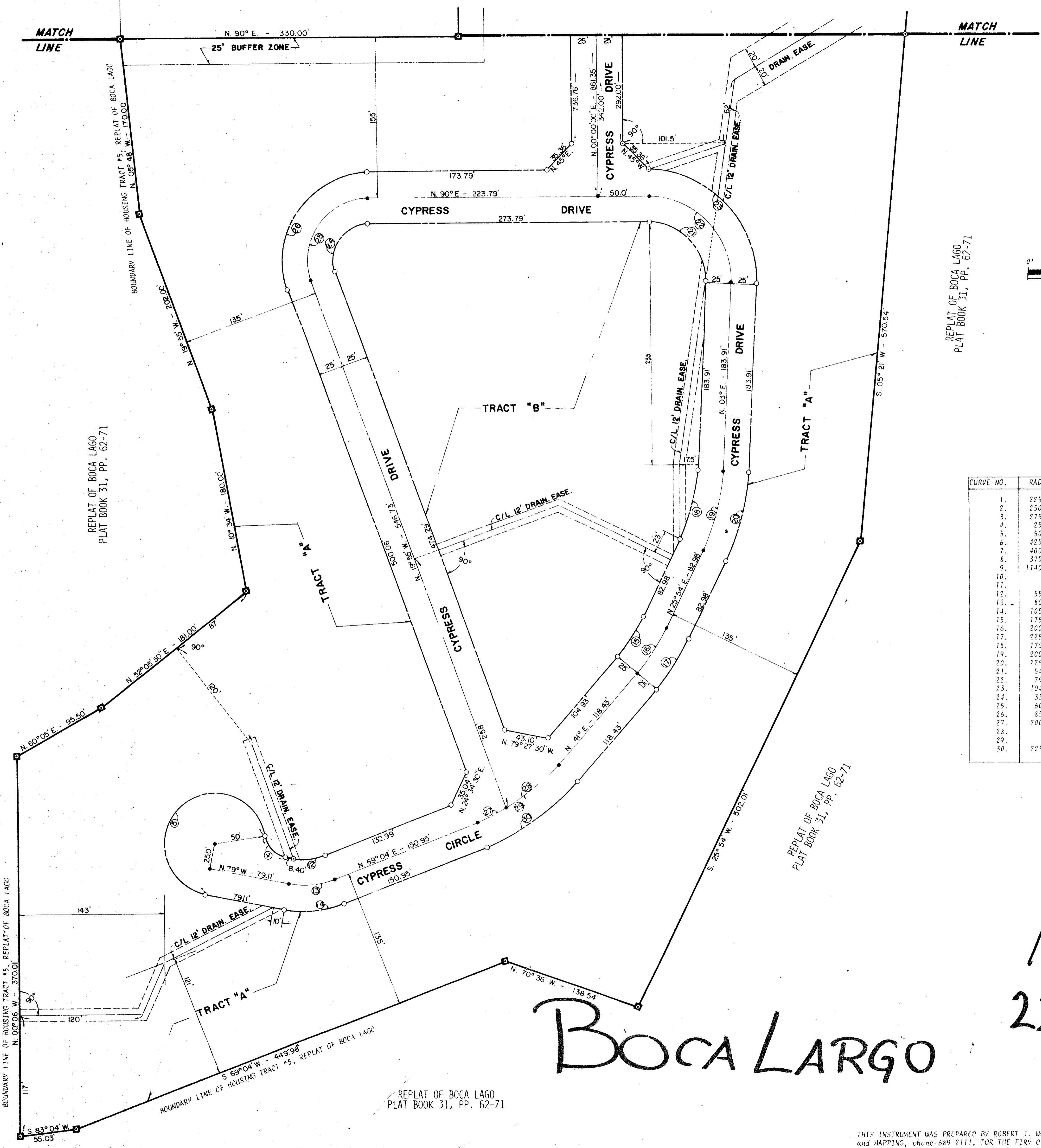
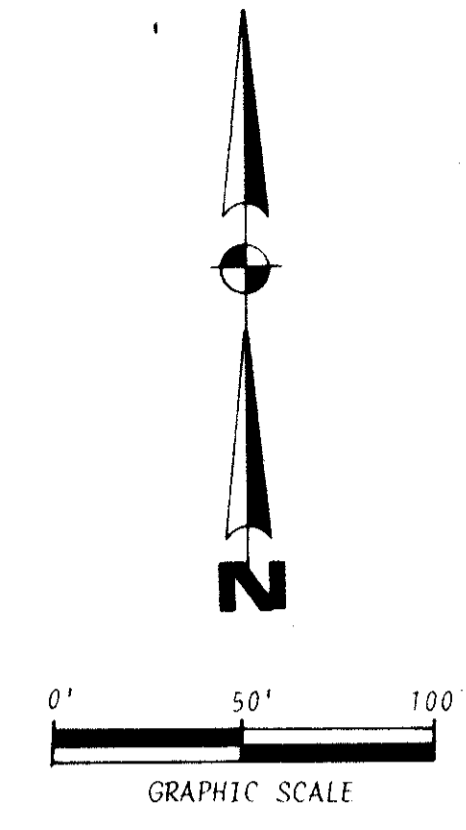


STATE OF FLORIDA  
 COUNTY OF PALM BEACH  
 This plat was filed for record  
 at \_\_\_\_\_ M. this \_\_\_\_\_ day of  
 \_\_\_\_\_ AD 1976, and duly  
 recorded in Plat Book No. \_\_\_\_\_  
 on Pages \_\_\_\_\_ thru \_\_\_\_\_  
 JOHN B. DUNKLE, Clerk  
 Circuit Court  
 BV: \_\_\_\_\_ D.C.



CURVE DATA TABLE  
 (For Sheets 2 and 3 of 3)

CURVE NO.	RADIUS	CENT. ANGLE	ARC LEN.	TANGENT
1.	225.00'	20° 48' 00"	81.68'	41.30'
2.	250.00'	" " "	90.76'	45.88'
3.	275.00'	" " "	99.83'	50.47'
4.	25.00'	70° 31' 44"	30.77'	17.68'
5.	50.00'	250° 31' 44"	218.63'	70.71' - Back Tan.
6.	425.00'	06° 53' 00"	51.06'	25.56'
7.	400.00'	" " "	48.05'	24.06'
8.	375.00'	" " "	45.05'	22.55'
9.	1140.44'	04° 22' 13"	86.99'	43.52'
10.	"	06° 46' 53"	134.98'	67.57'
11.	"	13° 40' 19"	272.13'	136.72'
12.	55.00'	31° 56' 00"	30.65'	15.74'
13.	80.00'	" " "	44.59'	22.89'
14.	105.00'	" " "	58.52'	30.04'
15.	175.00'	15° 06' 00"	46.12'	23.19'
16.	200.00'	" " "	52.71'	26.51'
17.	225.00'	" " "	59.30'	29.82'
18.	175.00'	22° 54' 00"	69.94'	35.45'
19.	200.00'	" " "	79.94'	40.51'
20.	225.00'	" " "	89.93'	45.57'
21.	54.71'	9° 00' 00"	88.80'	57.65'
22.	79.71'	" " "	129.38'	84.00'
23.	104.71'	" " "	169.96'	110.34'
24.	35.00'	109° 55' 00"	67.14'	49.91'
25.	60.00'	" " "	115.10'	85.56'
26.	85.00'	" " "	163.06'	121.20'
27.	200.00'	09° 59' 33"	74.88'	37.45'
28.	"	18° 04' 21"	53.29'	27.81'
29.	"	28° 01' 00"	97.37'	49.39'
30.	225.00'	" " "	110.22'	55.24'

THE HORIZONS OF BOCA LAGO (PUD)  
 BEING A REPLAT OF A PART OF THE "REPLAT OF BOCA  
 LAGO (PUD)," AS RECORDED IN PLAT BOOK 31, PAGES  
 62 THRU 71, PUBLIC RECORDS OF PALM BCH. CO., FLA.

APRIL 1976

Boca LARGO

1000-149  
 22/47/42

39

CONRAD W. SCHAEFER CONSULTING ENGINEERS, INC.  
 RECORD PLAT  
 32/18  
 150  
 150  
 3 OF

THIS INSTRUMENT WAS PREPARED BY ROBERT J. WHIDDEN IN THE OFFICES OF BENCH MARK LAND SURVEYING  
 AND MAPPING, phone-689-2111, FOR THE FIRM OF CONRAD W. SCHAEFER CONSULTING ENGINEERS, INC.,  
 2001 PALM BEACH LAKES BOULEVARD, WEST PALM BEACH, FLORIDA, zip-33409.