

THE HAMMOCKS OF BOCA WEST - P.U.D.

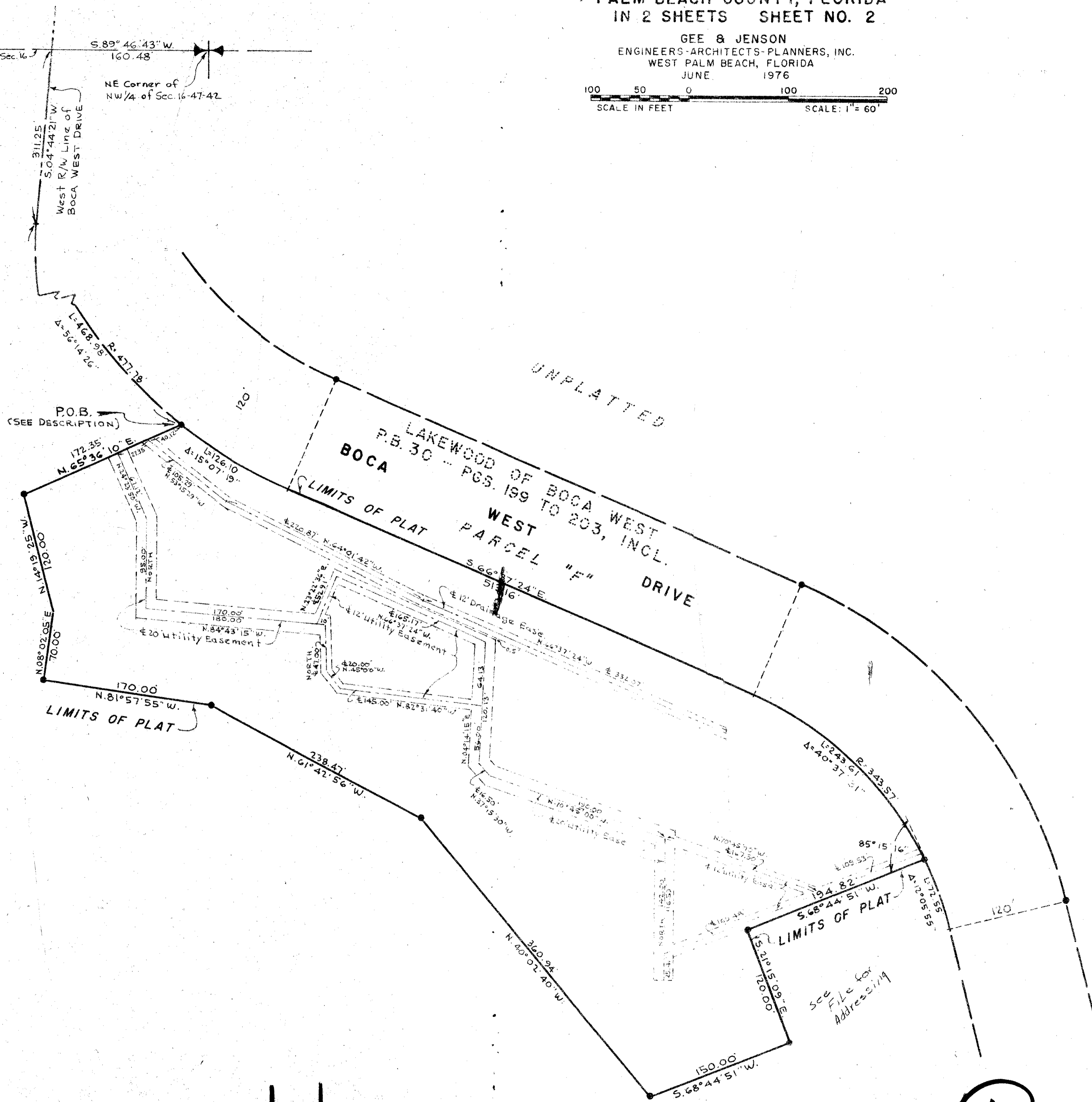
IN PART OF SECTION 16, TWP. 47 S., RGE. 42 E.

PALM BEACH COUNTY, FLORIDA
IN 2 SHEETS SHEET NO. 2

GEE & JENSON
ENGINEERS-ARCHITECTS-PLANNERS, INC.
WEST PALM BEACH, FLORIDA
JUNE 1976

SCALE IN FEET SCALE: 1" = 60'

STATE OF FLORIDA
COUNTY OF PALM BEACH
This Plat was filed for record at _____ M.
this _____ day of _____, 197____,
and duly recorded in Plat Book No. _____
on page _____
By JOHN B. DUNKLE, Clerk Circuit Court
D. C.



NOTE

- All bearings shown hereon are relative to an assumed meridian used throughout Boca West.
- Building Setback Lines shall be as required by Palm Beach County Zoning Regulations.
- There shall be no buildings or other structures placed on Utility Easements.
- There shall be no buildings or any kind of construction or trees or shrubs placed on Drainage Easements.
- Where Utility Easements and Drainage Easements cross Drainage Easements shall take precedent.
- denotes Permanent Reference Monument.



0214-323
15/47/4232/45

HAMMOCKS OF BOCA W.
P. U. D.

UNPLATTED

UNPLATTED

UNPLATTED