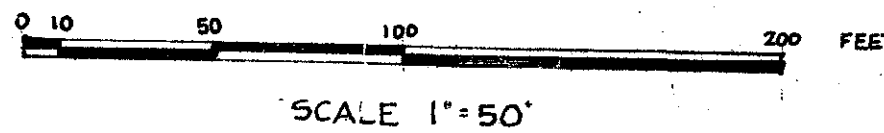
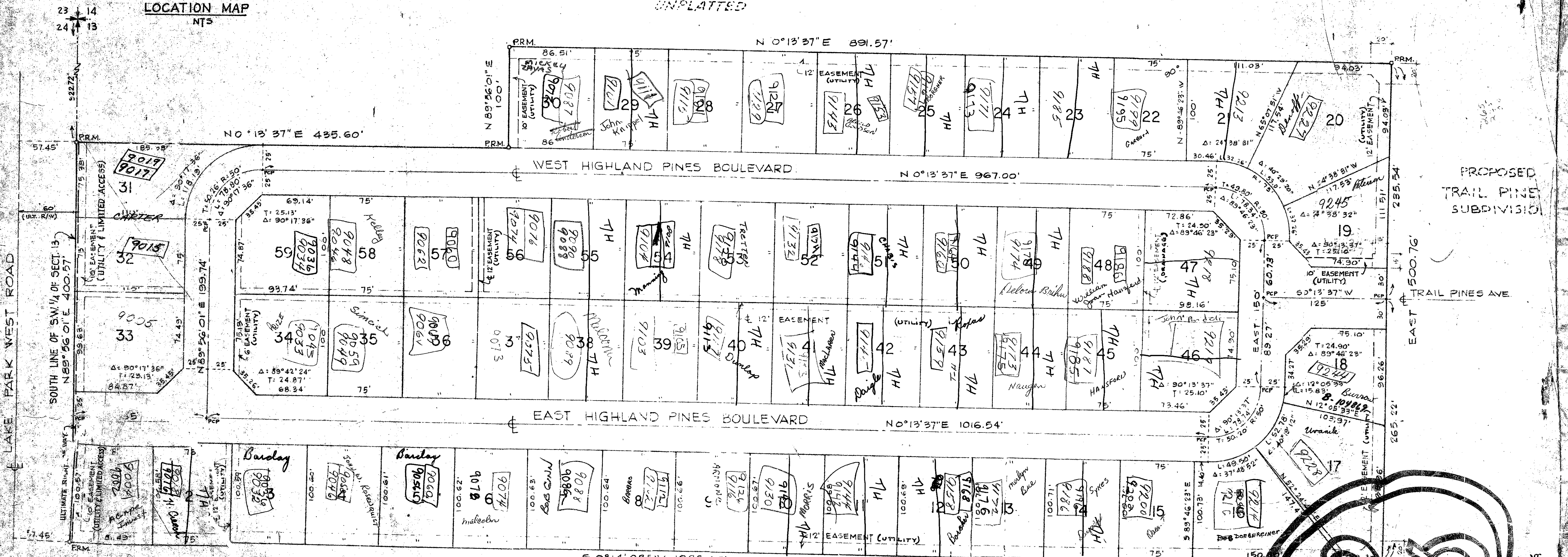
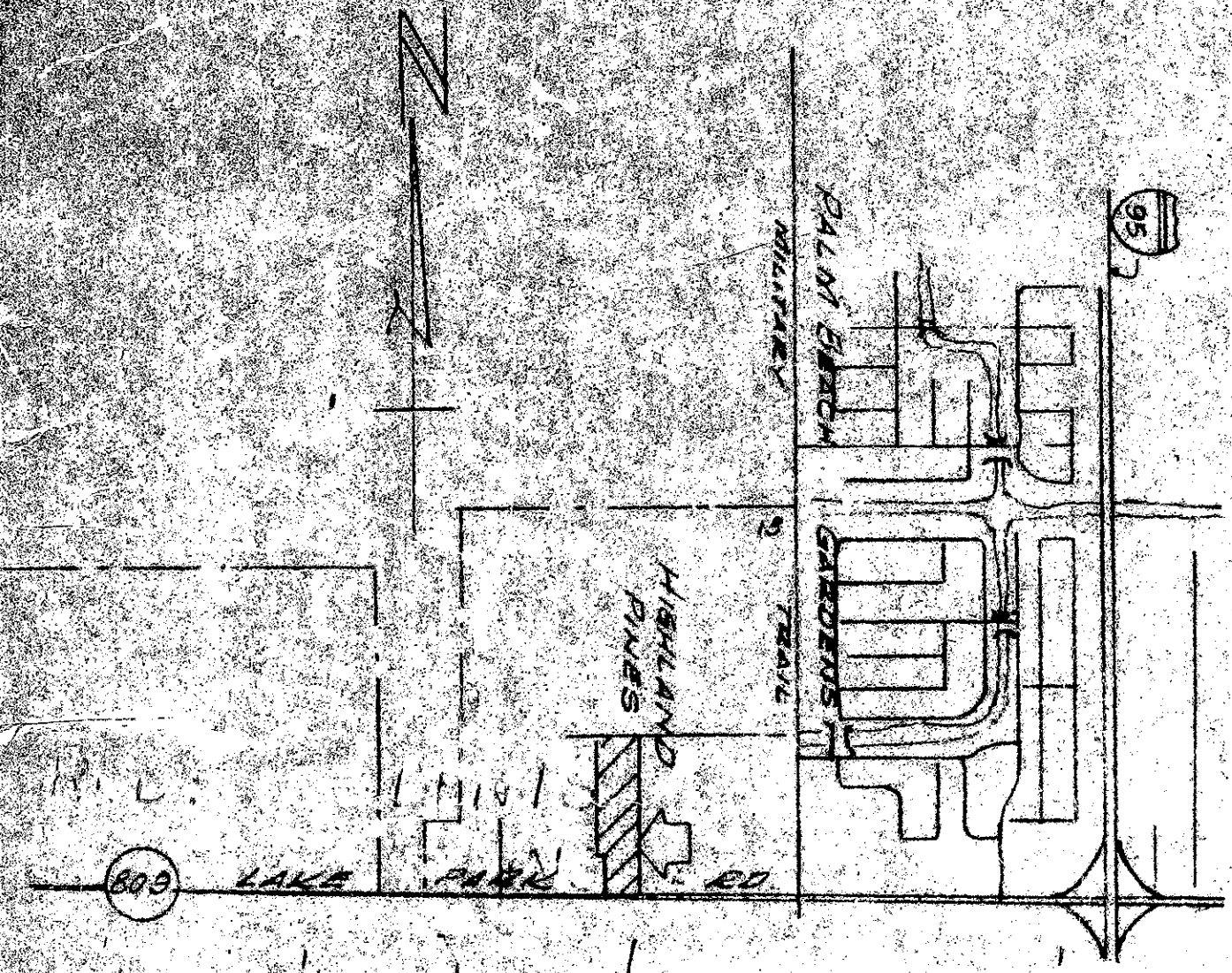


PLAT OF HIGHLAND PINES

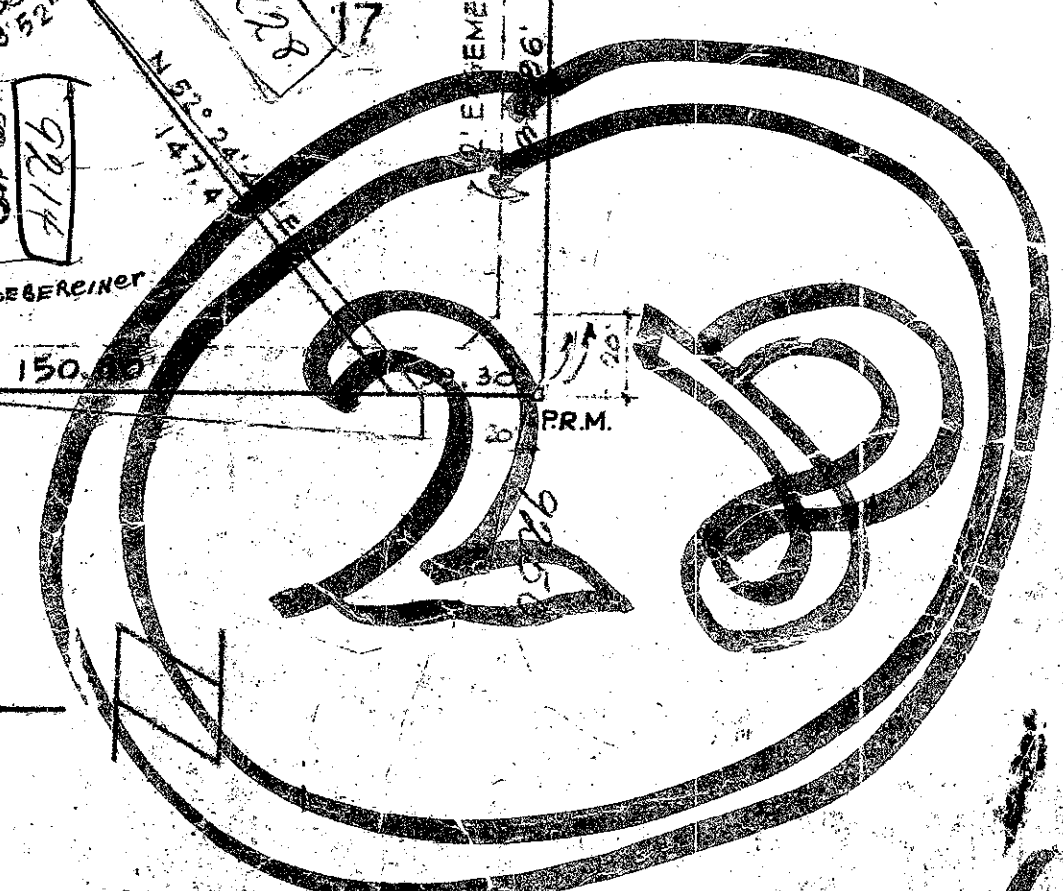
BEING IN SECTION 13, TOWNSHIP 42 SOUTH,
RANGE 42 EAST, PALM BEACH COUNTY, FLORIDA
SHEET 2 IN 2 SHEETS
AUGUST 1976



UNPLATTED



UNPLATTED



HIGHLAND PINES

MES D. CANTON, INC.

ENGINEERS AND SURVEYORS

13/42-32

0360-000

32/110