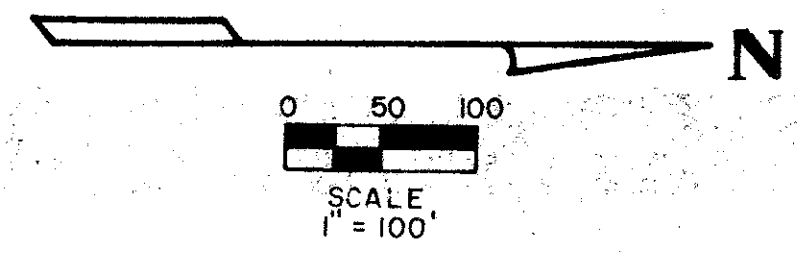
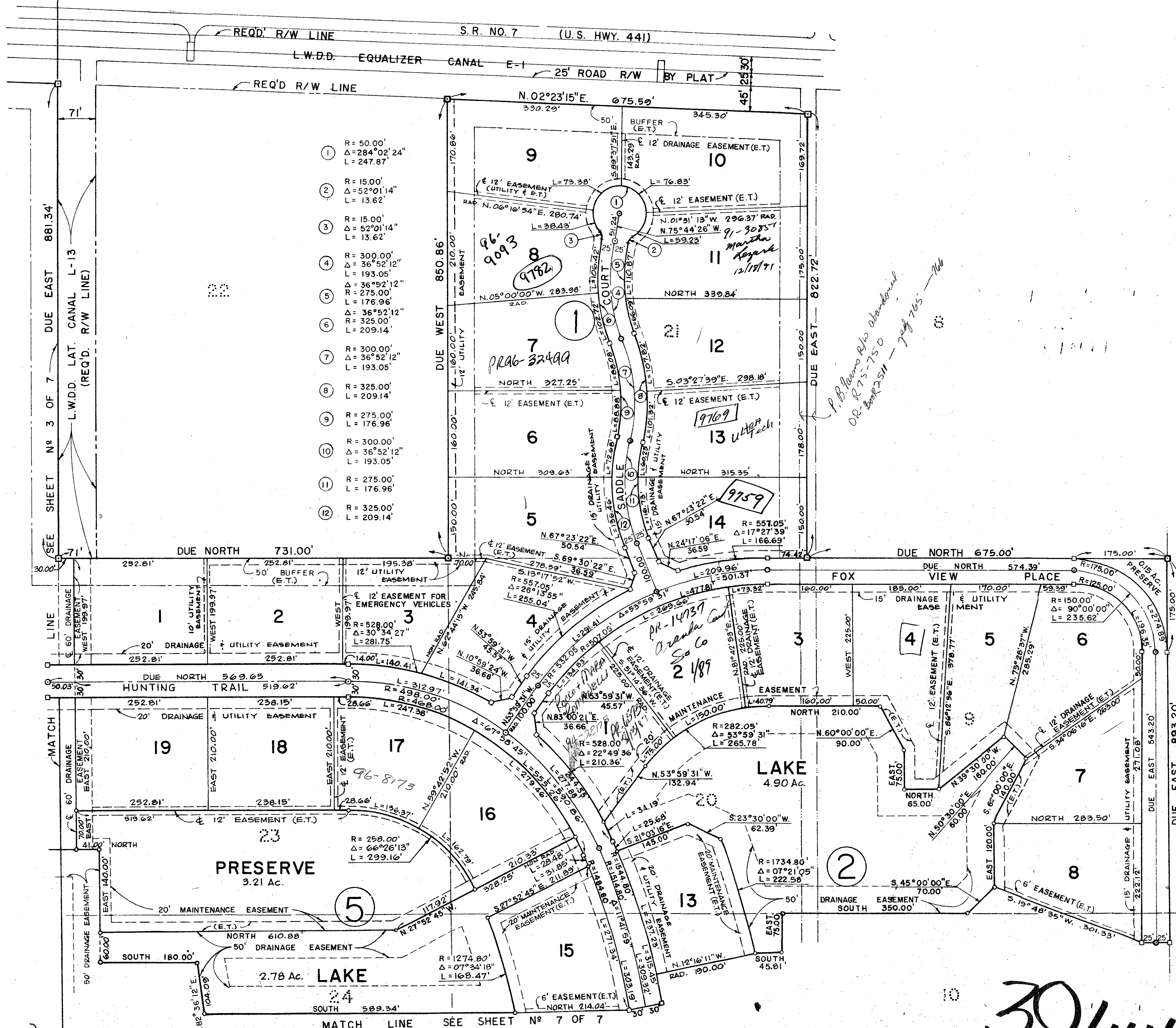


A PLANNED UNIT DEVELOPMENT  
"THE HUNT"



124



- ① R = 50.00'  
Δ = 284°02'24"  
L = 247.87'
- ② R = 15.00'  
Δ = 52°01'14"  
L = 13.62'
- ③ R = 15.00'  
Δ = 52°01'14"  
L = 13.62'
- ④ R = 300.00'  
Δ = 36°52'12"  
L = 193.05'
- ⑤ R = 275.00'  
Δ = 36°52'12"  
L = 176.96'
- ⑥ R = 325.00'  
Δ = 36°52'12"  
L = 209.14'
- ⑦ R = 300.00'  
Δ = 36°52'12"  
L = 193.05'
- ⑧ R = 325.00'  
L = 209.14'
- ⑨ R = 275.00'  
L = 176.96'
- ⑩ R = 300.00'  
Δ = 36°52'12"  
L = 193.05'
- ⑪ R = 275.00'  
L = 176.96'
- ⑫ R = 325.00'  
L = 209.14'

48

30/44/42

0257-000

32/124

THE HUNT

|   |               |                           |              |
|---|---------------|---------------------------|--------------|
| ADAIR & BRADY, INC.<br>CONSULTING ENGINEERS<br>LAND SURVEYORS |               | "THE HUNT"<br>RECORD PLAT |              |
| OR. G.W.  | SCALE GRAPHIC | DATE JUNE 75              | SHEET 6 OF 7 |
| CHKD. R.D.D.  | APP. 1-3580 A | JOB NO.                   | FP960        |