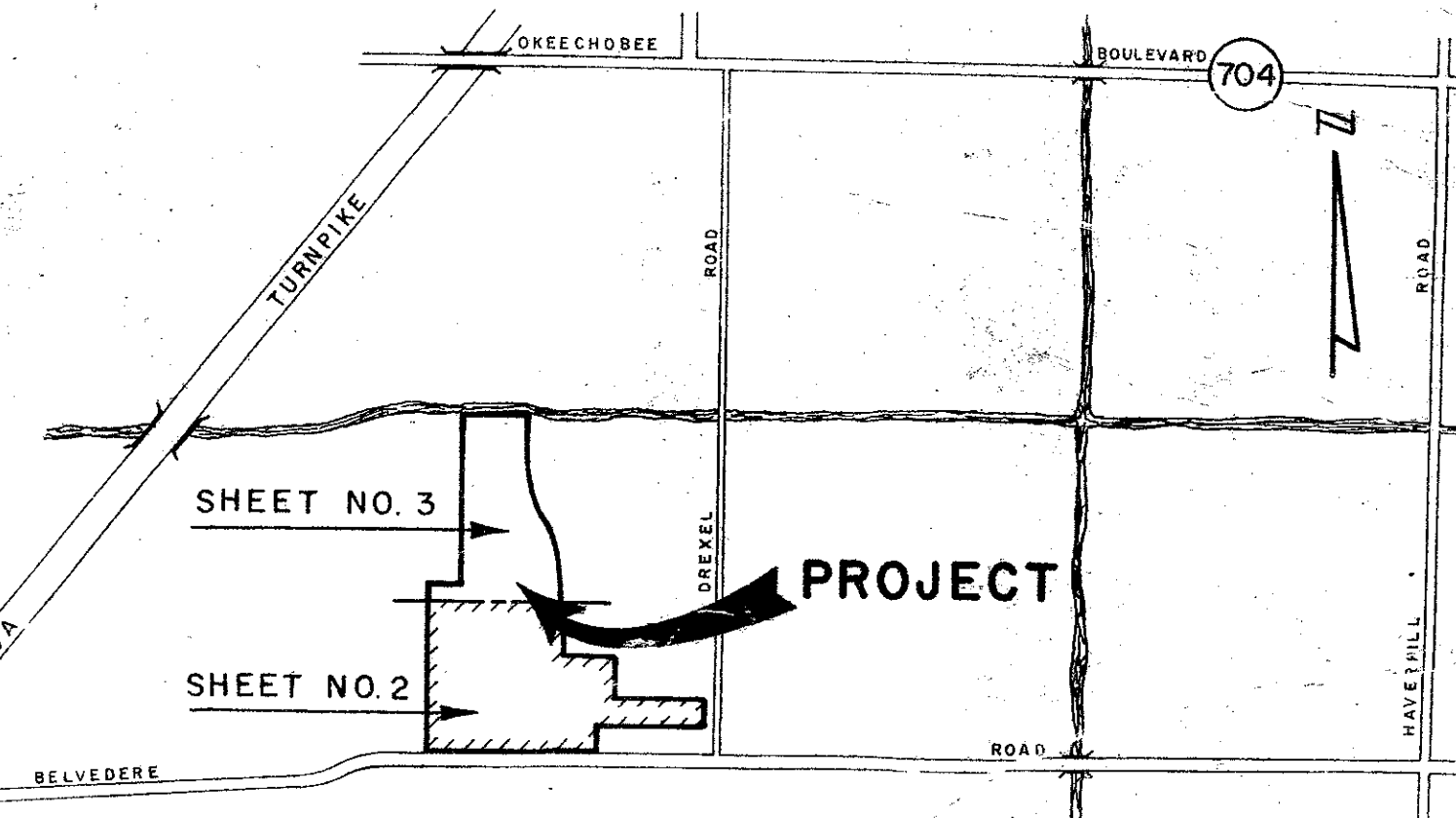


PLAT OF CAM ESTATES

IN THE S.E. 1/4 OF SECTION 27, T.43S., R.42E.
PALM BEACH COUNTY, FLORIDA
IN THREE SHEETS - SHEET NO. 2

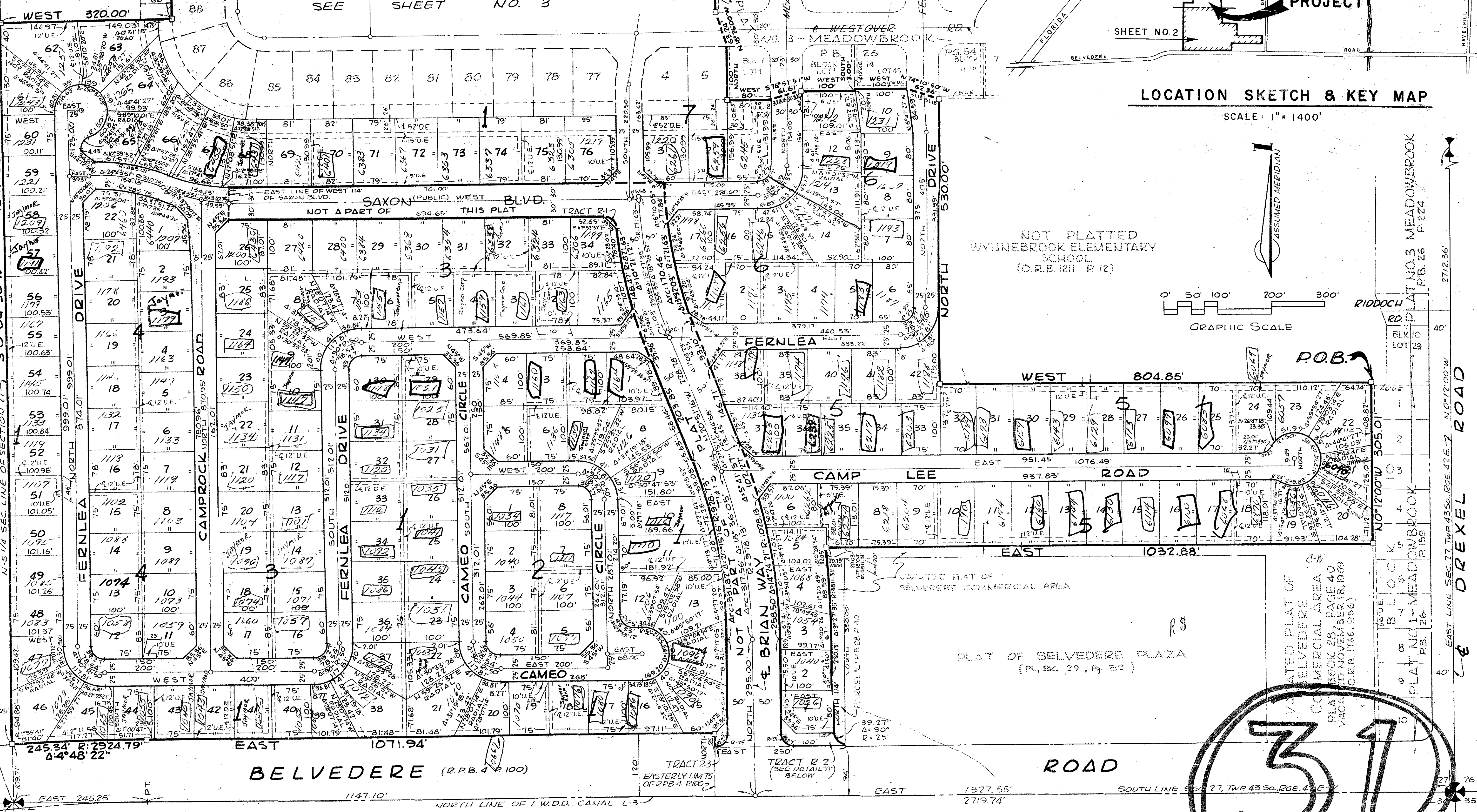
SEE
BACK

NOT PLATTED
NOT A PART OF
THIS PLAT
O.R.B. 440 P. 118



LOCATION SKETCH & KEY MAP

SCALE: 1" = 1400'



31

0383-001

27/43

32/129

TRACT R.3
DETAIL 'A'
SCALE: 1" = 50'

Field Book No. XL, Pg. 5/6	ROBERT E. OWEN ASSOCIATES, INC.	Date: JUN 15, 1976
Design: J. THO. 145	ENGINEERS, PLANNERS, SURVEYORS	Scale: 1" = 140'
Drawn: M.C. HELIN	WEST PALM BEACH, FLORIDA	Sheet: 2
Checked: D.M. WHITE		of 3

PLAT OF CAM ESTATES
IN THE S.E. 1/4 OF SEC. 27, T.43S., R.42E.
PALM BEACH COUNTY, FLORIDA
IN THREE SHEETS - SHEET NO. 2