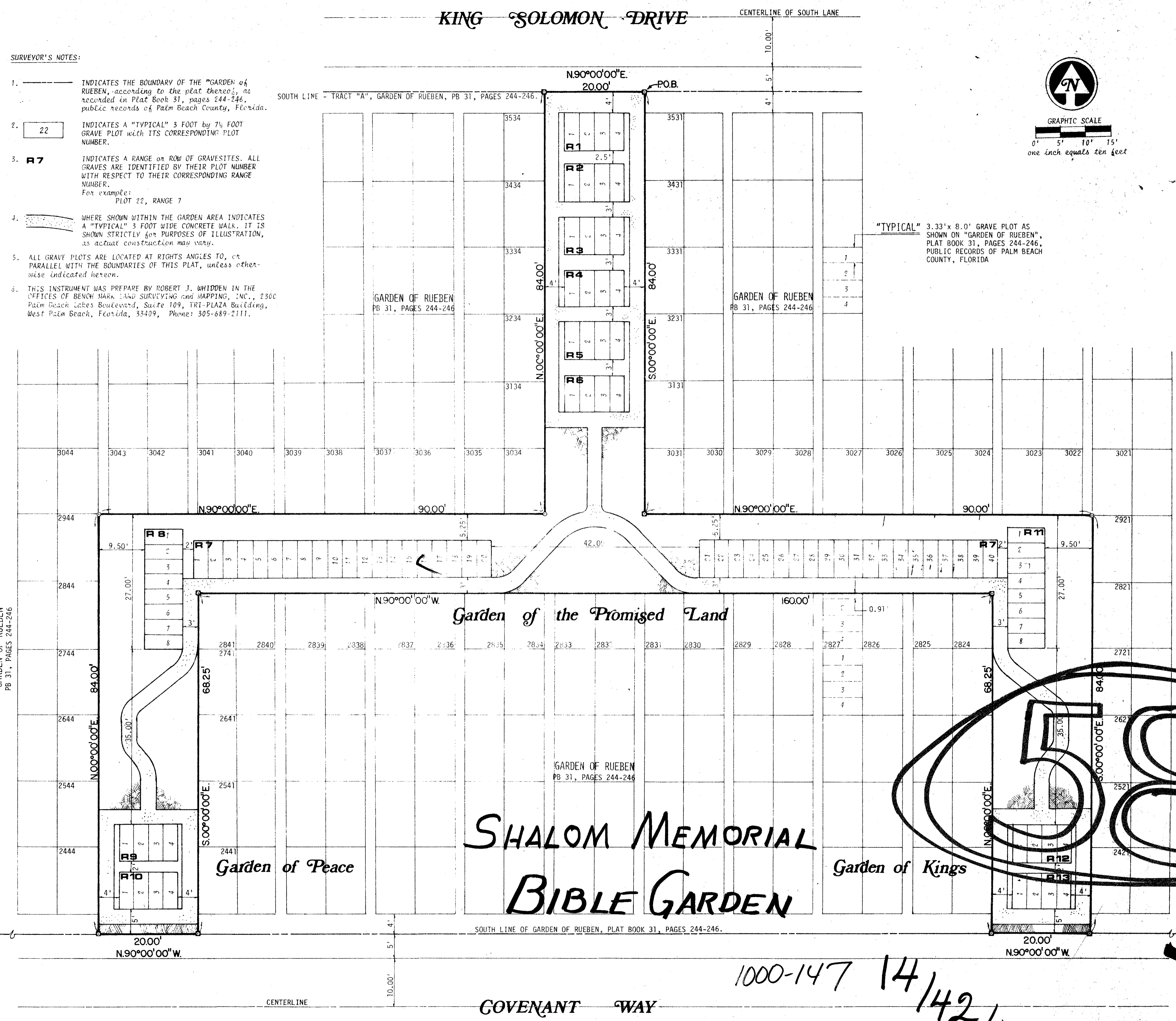
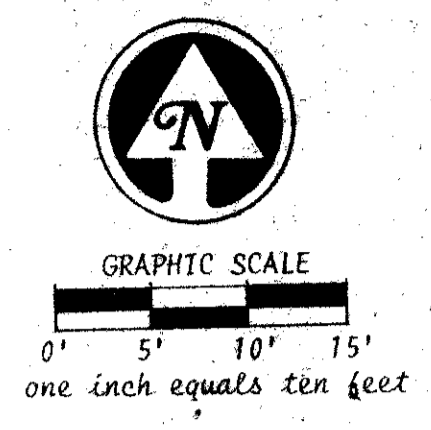


STATE OF FLORIDA)
COUNTY OF PALM BEACH)
THIS PLAT WAS FILED FOR RECORD
at M, THIS DAY of
1976, and DULY
RECORDED FOR PUBLIC RECORD IN
PLAT BOOK NO. PAGES
JOHN B. DUNKLE, clerk
Circuit Court
By: D.C.

SURVEYOR'S NOTES:

- INDICATES THE BOUNDARY OF THE "GARDEN OF RUEBEN", according to the plat thereof, as recorded in Plat Book 31, pages 244-246, public records of Palm Beach County, Florida.
- 22 INDICATES A "TYPICAL" 3 FOOT by 7 1/2 FOOT GRAVE PLOT with ITS CORRESPONDING PLOT NUMBER.
- R7 INDICATES A RANGE OR ROW OF GRAVESITES. ALL GRAVES ARE IDENTIFIED BY THEIR PLOT NUMBER WITH RESPECT TO THEIR CORRESPONDING RANGE NUMBER.
For example:
PLOT 22, RANGE 7
- WHERE SHOWN WITHIN THE GARDEN AREA INDICATES A "TYPICAL" 3 FOOT WIDE CONCRETE WALK. IT IS SHOWN STRICTLY FOR PURPOSES OF ILLUSTRATION, as actual construction may vary.
- ALL GRAVE PLOTS ARE LOCATED AT RIGHTS ANGLES TO, OR PARALLEL WITH THE BOUNDARIES OF THIS PLAT, unless otherwise indicated hereon.
- THIS INSTRUMENT WAS PREPARED BY ROBERT J. WHIDDEN IN THE OFFICES OF BENCH MARK LAND SURVEYING AND MAPPING, INC., 2300 Palm Beach Lakes Boulevard, Suite 109, TRI-PLAZA Building, West Palm Beach, Florida, 33409, Phone: 305-689-2111.



SHALOM MEMORIAL BIBLE GARDEN
 BEING A REPLAT OF A PORTION OF THE GARDEN
 OF RUEBEN, P.B. 31, PAGES 244-246 LYING IN SEC. 14,
 TWP. 42 50' N., RGE. 41 E., PALM BEACH COUNTY, FLORIDA
 AUGUST, 1976

32/135

1000-147 14/42/41