

PLAT No.1

(A PLANNED UNIT DEVELOPMENT)

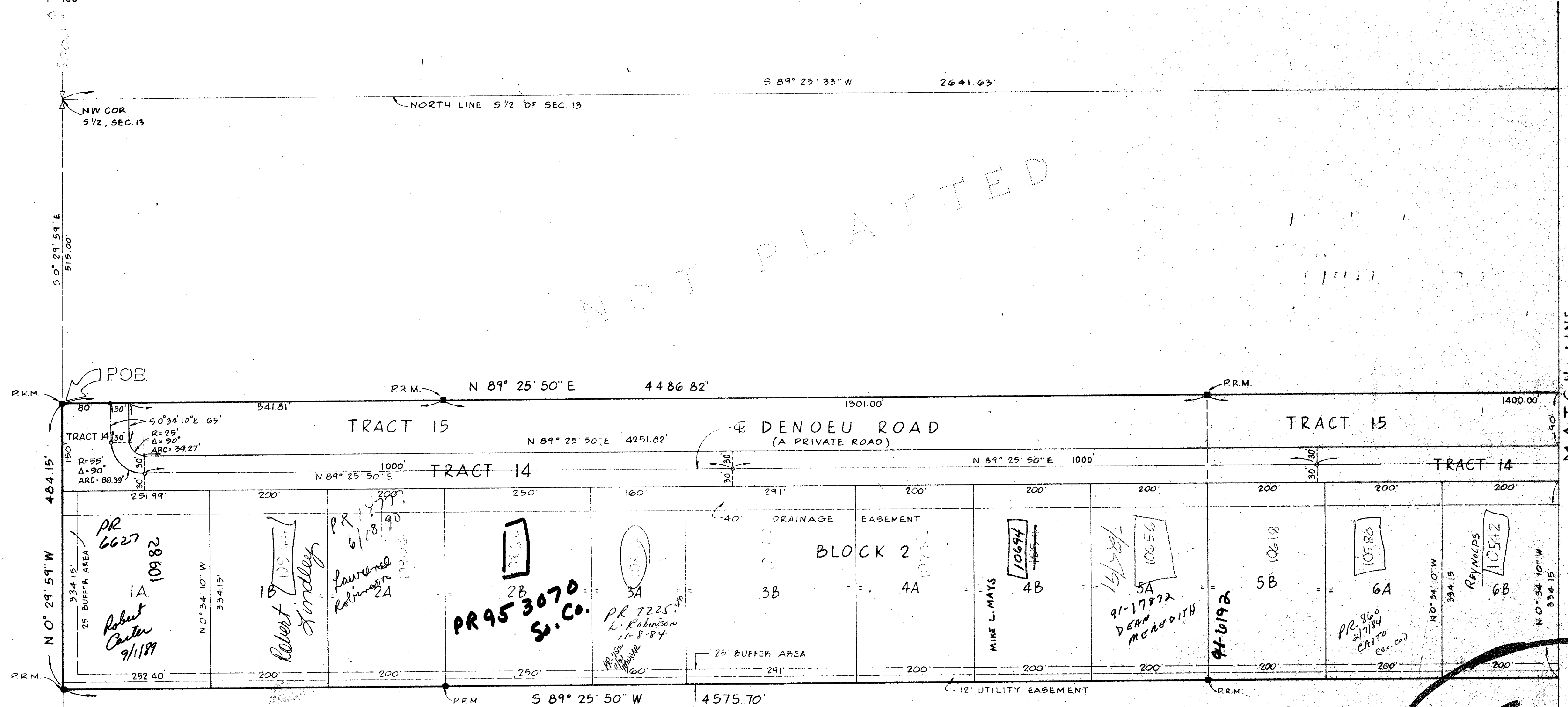
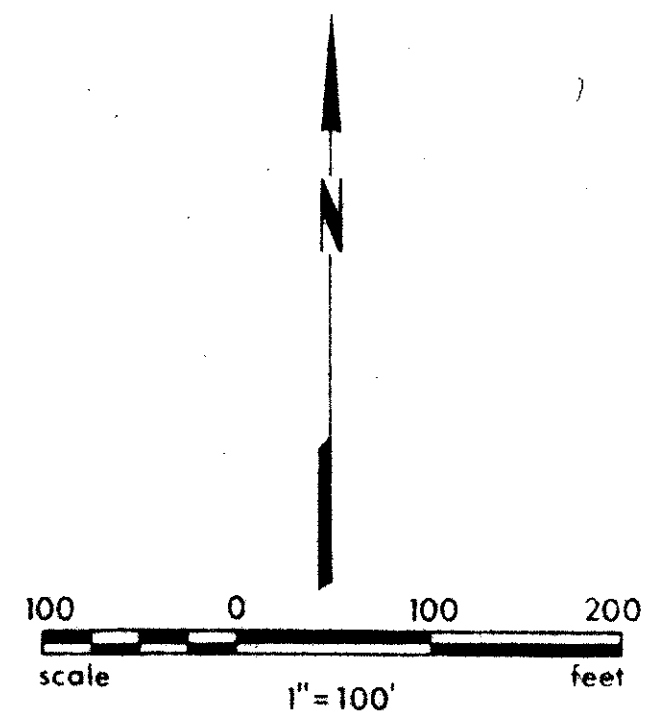
WILLIS GLIDERPORT

BEING A SUBDIVISION OF A PORTION OF THE S 1/2 OF SECTION 13, TOWNSHIP 45 SOUTH, RANGE 41 EAST PALM BEACH COUNTY, FLORIDA

IN 3 SHEETS SHEET NO. 2

FEBRUARY 1977

147



NOTES:
 ■ - PERMANENT REFERENCE MONUMENT (PRM)
 ○ - PERMANENT CONTROL POINT (PCP)
 BEARING REFERENCE: ALL BEARINGS REFER TO ASSUMED SOUTH 89° 25' 33" WEST ALONG THE NORTH LINE OF THE SOUTH ONE-HALF OF SECTION 13, TWP 45 S, RGE 41E.
 THERE SHALL BE NO BUILDINGS OR STRUCTURES PLACED ON UTILITY EASEMENTS.
 THERE SHALL BE NO TYPE OF CONSTRUCTION OR THE PLANTING OF TREES OR SHRUBS ON DRAINAGE EASEMENT.
 RESTRICTIONS, RESERVATIONS AND RESTRICTIVE COVENANTS FOR THIS PLAT ARE PROVIDED IN THE APPLICABLE WILLIS GLIDERPORT PROPERTY OWNERS ASSOCIATION, INC DOCUMENTS AS RECORDED IN O.R.B. 2647 PGS. 500-526

1000-156

AREA OF LOTS 1A THRU 12	= 36.855 AC.
AREA OF TRACTS 13 & 14	= 7.710 AC.
AREA OF TRACTS 15 & 16	= 8.920 AC.
TOTAL AREA	= 53.485 AC.

TOTAL DWELLING UNITS SITES = 23
 DENSITY = 0.43 UNITS PER ACRE
 TOTAL OPEN AREA = 40 ACRES

64

13/45/41

32/147

THIS INSTRUMENT WAS PREPARED BY
 J. J. DEDMAN
 MUCK, ROOS & SEARCY, INC.
 CONSULTING ENGINEERS
 2930 OKEECHOBEE BOULEVARD
 WEST PALM BEACH, FLORIDA 33401

WILLIS GLIDERPORT

NOT PLATTED

NOT PLATTED

NOT PLATTED