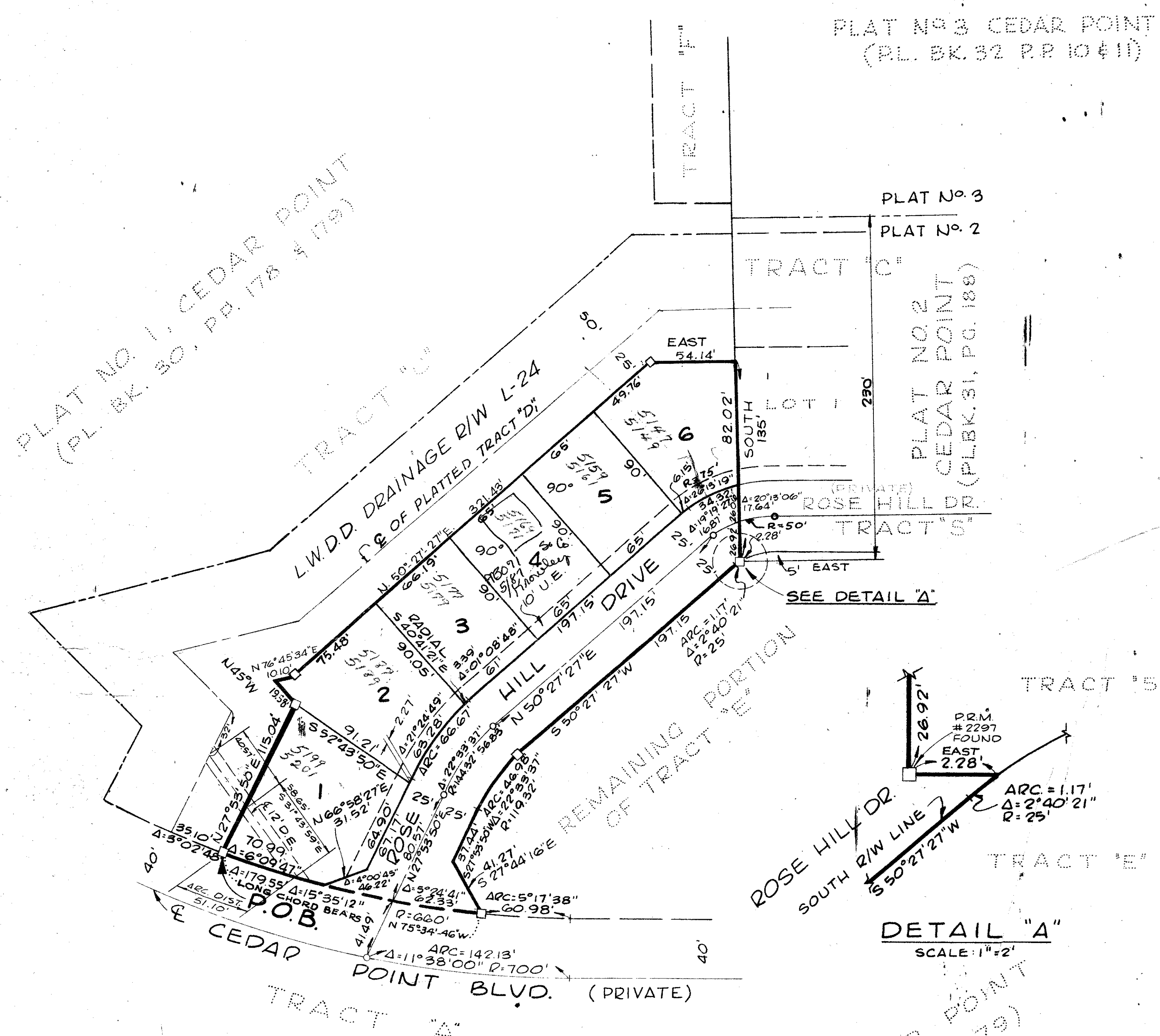


A PLANNED UNIT DEVELOPMENT IN COUNTRY CLUB TRAIL

PLAT No. 4, CEDAR POINT

OCTOBER, 1976
SHEET 2 OF 2



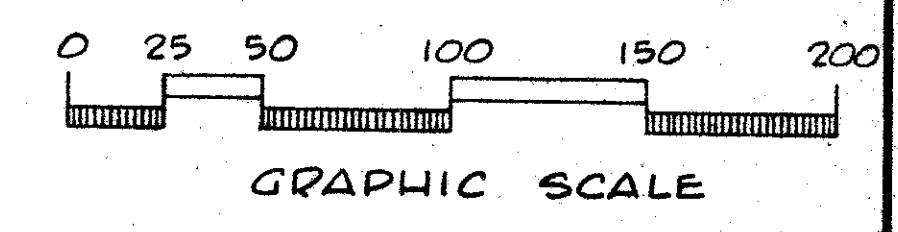
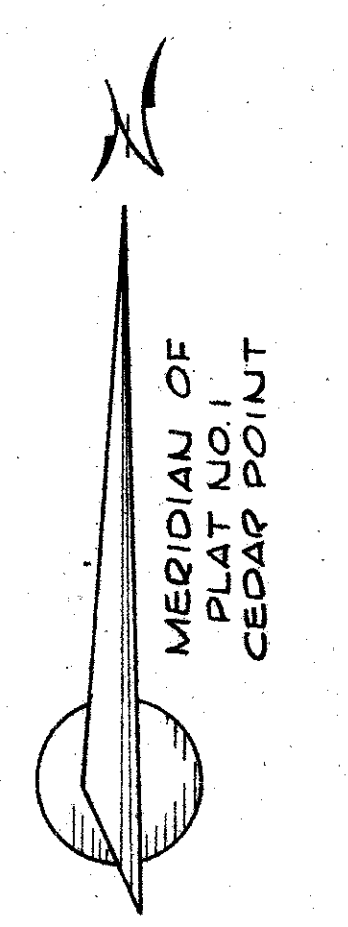
PLAT NO. 1, CEDAR POINT
(PL. BK. 30, PP. 178 & 179)

PLAT NO. 3 CEDAR POINT
(PL. BK. 32 PP. 10 & 11)

PLAT NO. 3

PLAT NO. 2

PLAT NO. 2
CEDAR POINT
(PLBK. 31, PG. 188)



35

PLAT #4 OF CEDAR POINT

NOTE: DR DESIGNATES DRAINAGE EASEMENT
U.E. DESIGNATES UTILITY EASEMENT

Field Book	No. C-166 pg. 3
Design	J. THOMAS
Drawn	C. G. 255
Checked	D. WHITE
Field	R. FRALICK

ROBERT E. OWEN & ASSOCIATES, INC.
ENGINEERS · PLANNERS · SURVEYORS
WEST PALM BEACH
FLORIDA

PLAT No. 4
CEDAR POINT
IN 2 SHEETS, SHEET 2 OF 2

Date	OCT. 1976
Scale	1" = 50'
Sheet	2
of	2
File No.	BE-2227-D

26/145/42
0226-30033/19

REFER TO CF 79P11