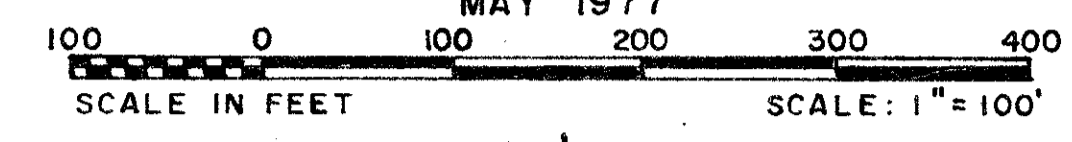


GREENBRIAR I OF SHERBROOKE

IN PART OF SEC'S 5 & 6, TWP. 45 S., RGE. 42 E.

PALM BEACH COUNTY, FLORIDA
IN 3 SHEETS SHEET NO. 2

GEE & JENSON
ENGINEERS-ARCHITECTS-PLANNERS, INC.
WEST PALM BEACH, FLORIDA
MAY 1977



STATE OF FLORIDA
COUNTY OF PALM BEACH SS
This Plat was filed for record at _____ M.
this _____ day of _____, 1977,
and duly recorded in Plat Book No. _____
on page _____
JOHN B. DUNKLE, Clerk Circuit Court
By _____ D.C.

DETAIL - SECTION TIE
FOR POINT OF BEGINNING
SOUTH PORTION
(NOT TO SCALE)

SHEET NO. 3

NOTE

All bearings shown hereon are relative to an assumed meridian with the South Line of Section 31-44-42 bearing S. 87° 57' 15" E.
Building Setback Line shall be as required by Palm Beach County Zoning Regulations.
There shall be no buildings or any kind of construction or trees or shrubs placed on Utility Easements and/or Drainage Easements.
● denotes Permanent Reference Monument.
○ denotes Permanent Control Point.

① CURVE DATA
R: 112.23'
Δ: 29° 55' 53"
L: 58.63'
T: 30.00'

49

546/45/42

0309-001

33/56

4 NORTH CALUMET CIRCLE

P.O.B. (SOUTH PORTION)
(See Below)

L.W.D.D. L-16

TWP. 44 1/2 S.
TWP. 45 S.

LEXINGTON I OF SHERBROOKE
SHEET NO. 2
P.B.

SE Corner of Tract 42
Lot 1 P.B. G- Pg. 99
P.B. FARMS Co. PLAT No. 13

ROAD
LYONS ROAD

LEXINGTON I OF SHERBROOKE
P.B. 32 PGS. 195 - 198, INCL.

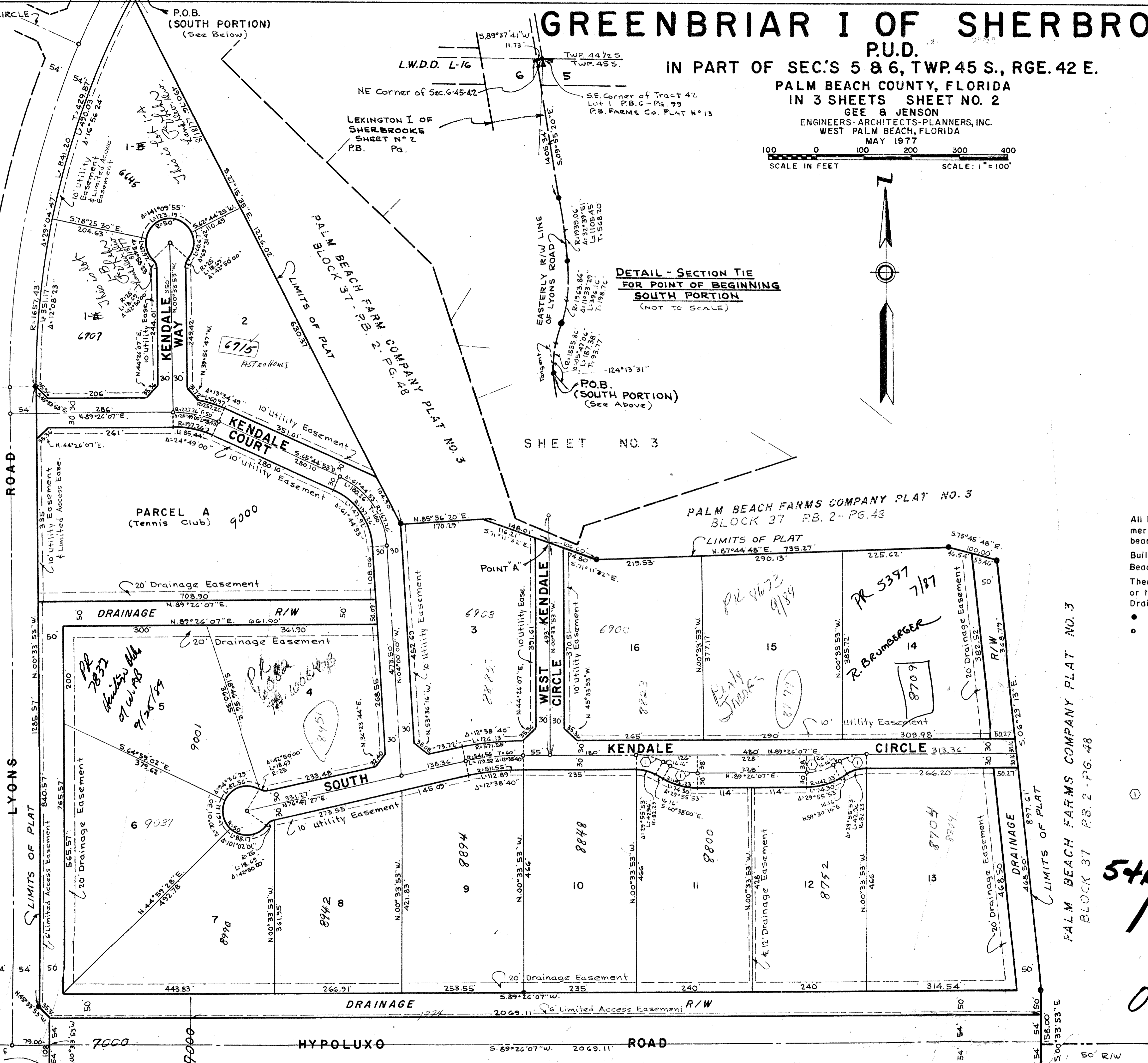
LYONS ROAD

ROAD

HYPOLUXO ROAD

ROAD

GREENBRIAR I OF SHERBROOKE



PALM BEACH FARMS COMPANY PLAT NO. 3
BLOCK 37 P.B. 2-PG. 48