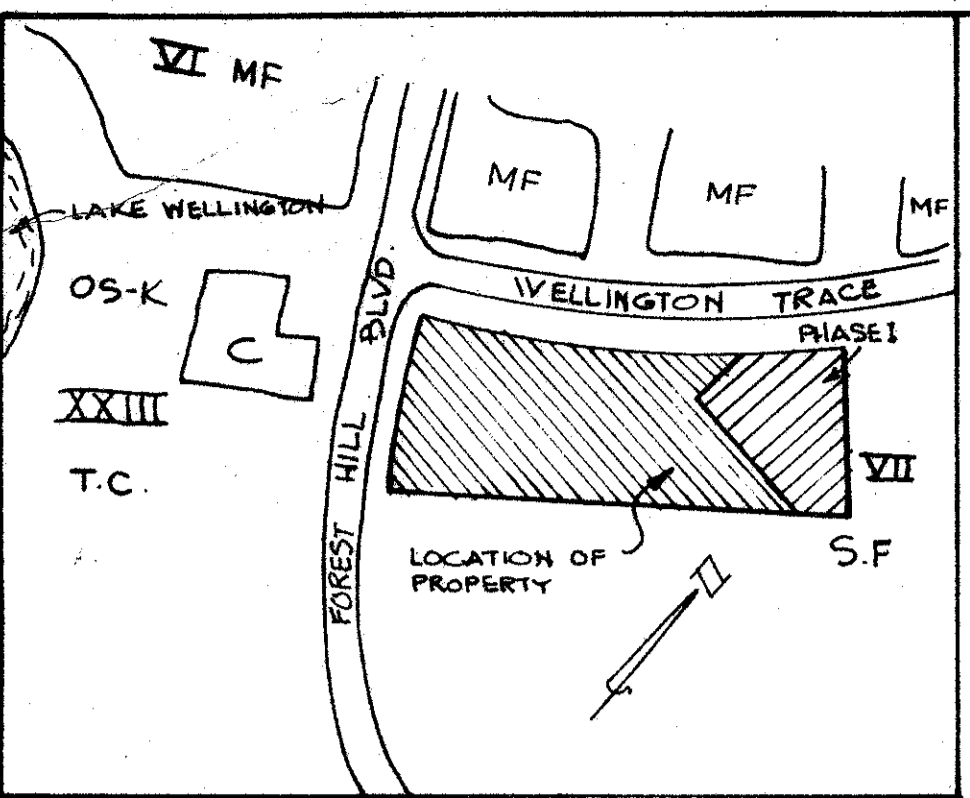
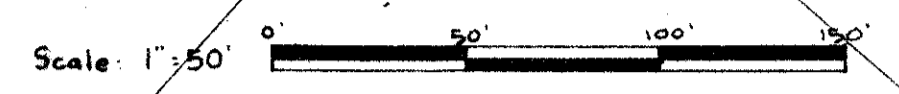
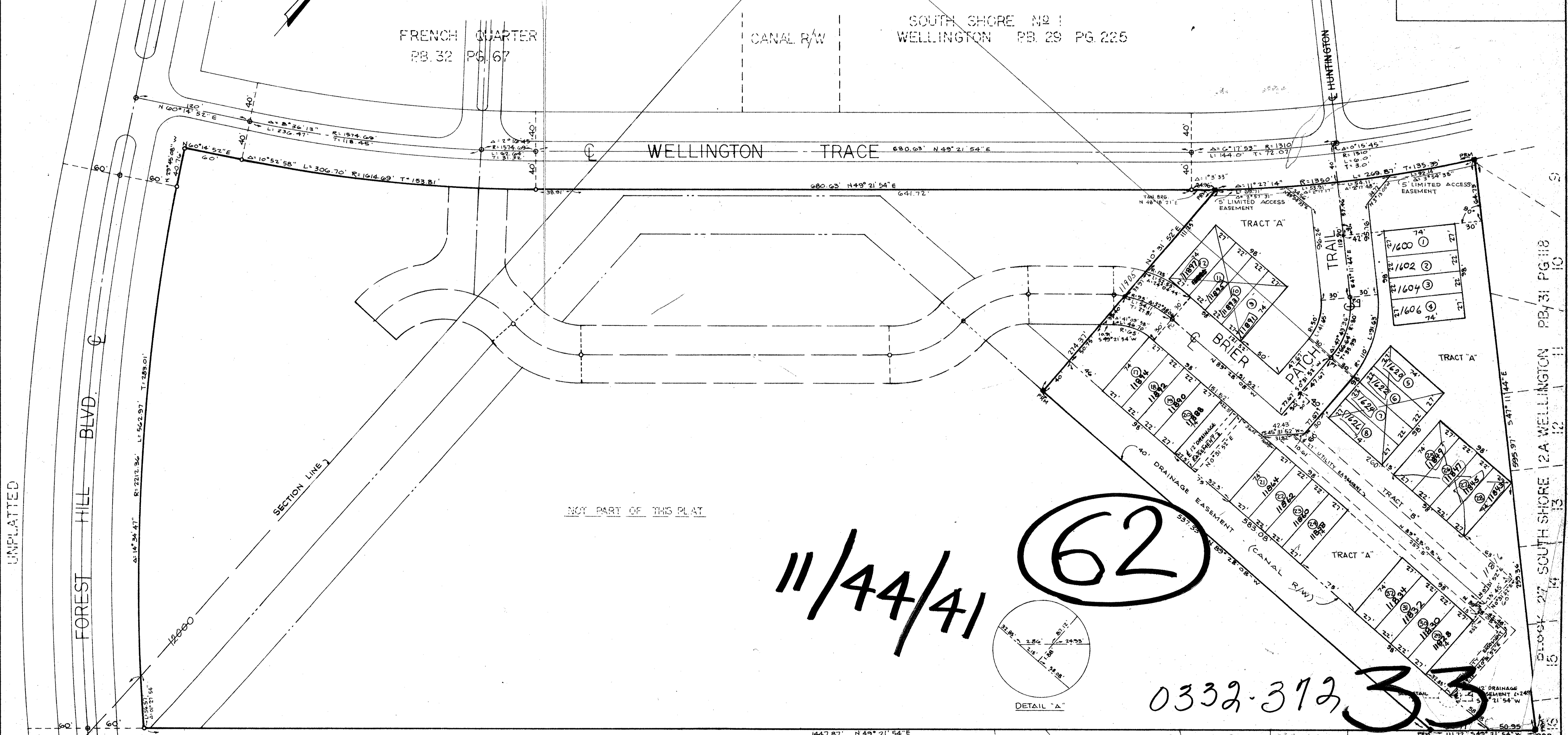


PLAT OF THE BRIER PATCH

WELLINGTON, P.U.D.
BEING IN SECTION 11, TWP 44 S., RGE. 41 E.,
PALM BEACH COUNTY, FLORIDA
MAY 1977
SHEET 2 IN 2 SHEETS



LOCATION MAP NOT TO SCALE



UNPLATTED

FOREST HILL BLVD.

FRENCH QUARTER
PB. 32 PG. 67

CANAL R/W

SOUTH SHORE NO 1
WELLINGTON PB. 29 PG. 225

WELLINGTON TRACE

HUNTINGTON TRAIL

SECTION LINE

NOT PART OF THIS PLAT

11/44/41

62

0332-372

33

63

NOTES:

- 1.) ALL BEARINGS SHOWN HEREON ARE BASED ON THE PLATS OF SOUTH SHORE 1 AND 2A OF WELLINGTON, PLAT BOOK 29, PAGE 225 AND PLAT BOOK 31, PAGES 117 AND 118 RESPECTIVELY.
- 2.) □ DENOTES PERMANENT REFERENCE MONUMENT (P.R.M.) SET
- 3.) ○ DENOTES PERMANENT CONTROL POINT SET (P.C.P.)
- 4.) THERE SHALL BE NO BUILDINGS OR ANY TYPE OF CONSTRUCTION OR THE PLANTING OF TREES OR SHRUBS ON DRAINAGE OR UTILITY EASEMENTS.
- 5.) STREETS AND LOTS ARE AS SHOWN AND NUMBERED, ALL OTHER AREAS WITHIN THE LIMITS OF THIS PLAT ARE PART OF TRACT A. INTERSECTION ANGLES ARE 90°.

UNPLATTED

BLOCK 27 SOUTH SHORE 2A WELLINGTON PB 31 PG 117

THE BRIER PATCH

JAMES D. CARLTON, INC.
 CONSULTING ENGINEERS AND LAND SURVEYORS
 2750 OKEECHOBEE BOULEVARD WEST PALM BEACH FLORIDA
 683-8800 683-8801