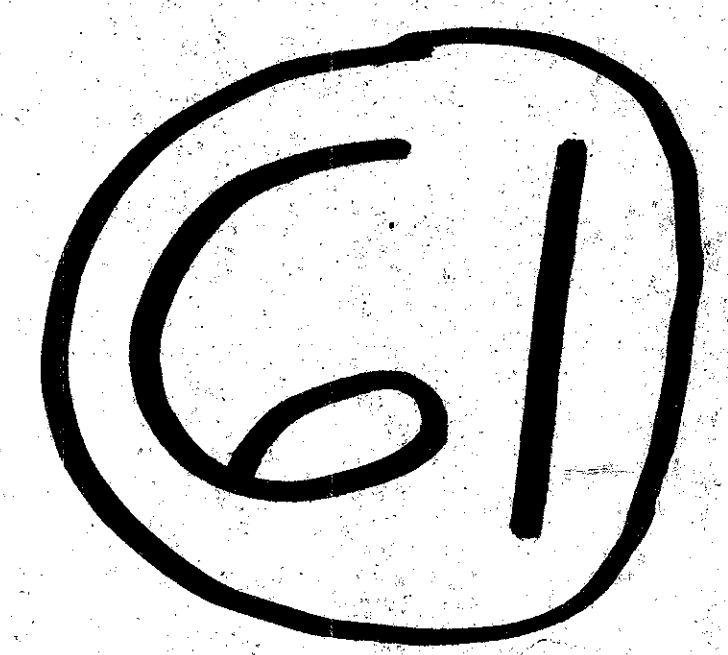
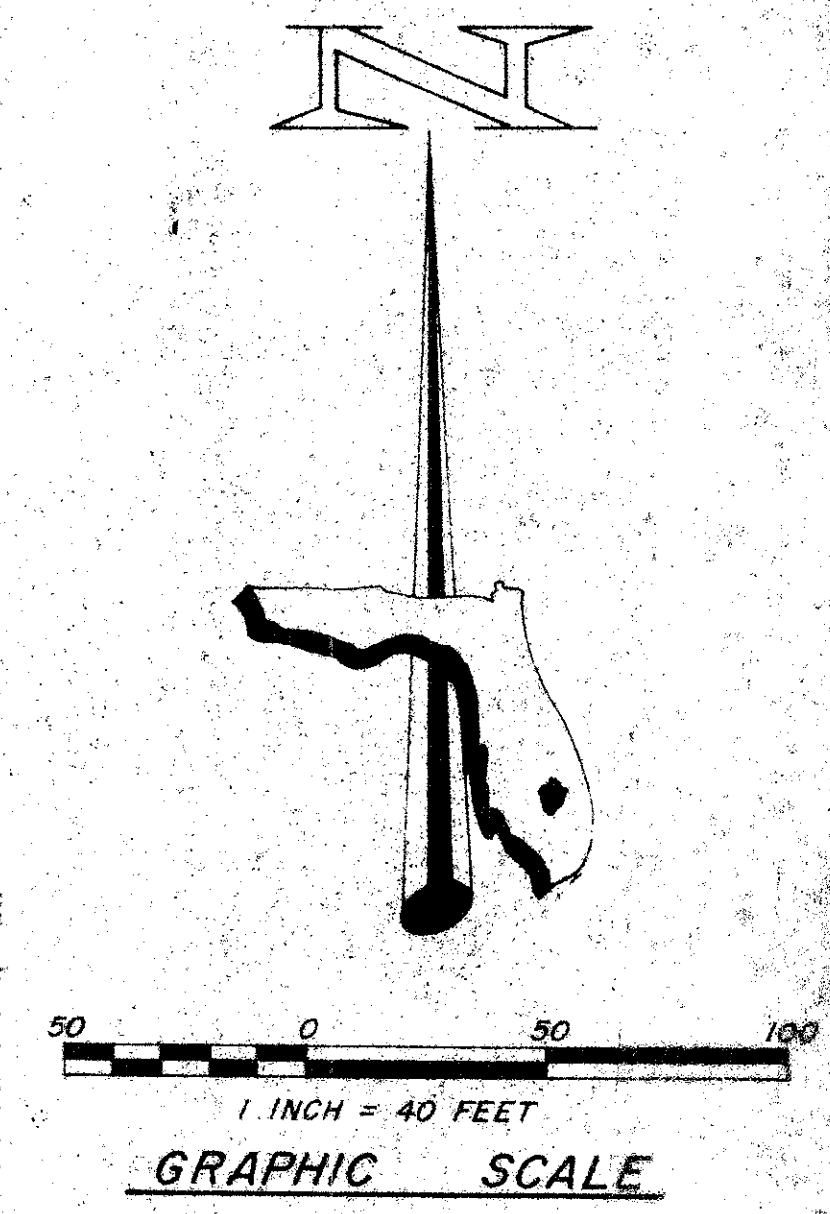
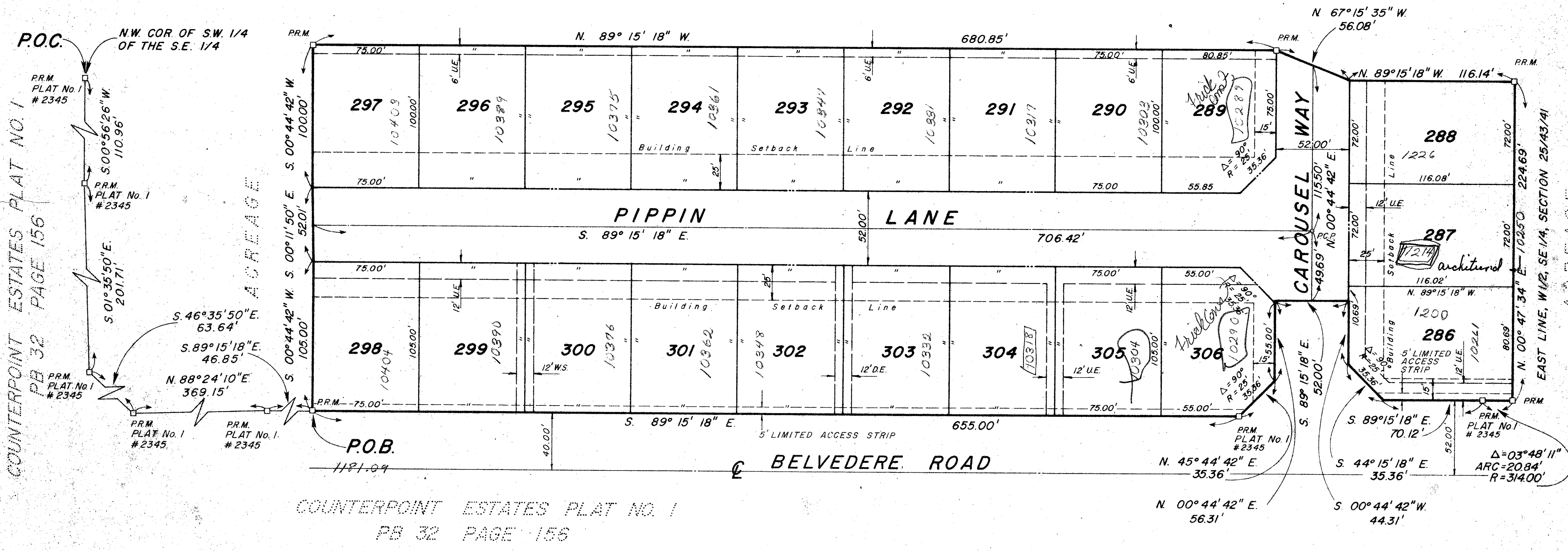


# COUNTERPOINT ESTATES PLAT No. 2

**IN SECTION 25, TOWNSHIP 43 SOUTH, RANGE 41 EAST, PALM BEACH COUNTY, FLORIDA**

**JULY 1977**



**BEARING DATUM**

ALL BEARINGS SHOWN HEREON ARE RELATED TO AN ASSUMED BEARING OF N. 00° 47' 34" E. ALONG THE EAST LINE OF THE WEST HALF OF THE S.E. 1/4 OF SECTION 25, TOWNSHIP 43 SOUTH, RANGE 41 EAST

- NOTES**
1. NO BUILDING OR ANY KIND OF CONSTRUCTION OR TREES SHALL BE PLACED WITHIN EASEMENTS.
  2. DRAINAGE EASEMENTS TAKE PRECEDENCE OVER UTILITY EASEMENTS.
  3. MAINTENANCE ACCESS RIGHTS ARE GRANTED OVER ALL TRACTS SHOWN HEREON FOR THE PURPOSE OF MAINTENANCE OF UTILITIES.

- LEGEND**
- U.E. INDICATES POWER AND/OR TELEPHONE EASEMENT.
  - D.E. INDICATES DRAINAGE EASEMENT.
  - W.S. INDICATES WATER AND/OR SANITARY SEWER EASEMENT.
  - P.C.P. INDICATES PERMANENT CONTROL POINT.
  - P.R.M. INDICATES PERMANENT REFERENCE MONUMENT.

25/43/41

0225-310

# COUNTERPOINT ESTATES PLAT #2

<b>R.A. GONZALEZ AND ASSOCIATES, INC.</b> CONSULTING ENGINEERS		
<b>FLORIDA SURVEYING &amp; MAPPING, INC.</b> REGISTERED LAND SURVEYORS		
NORTH PALM BEACH, FLORIDA		
<b>COUNTERPOINT ESTATES PLAT NO. 2</b>		
33	75	
DESIGNED BY: R.S.	APPROVED: [Signature]	DATE: 7-5-77
DRAWN BY: J.M.		
CHECKED BY: G.P.		