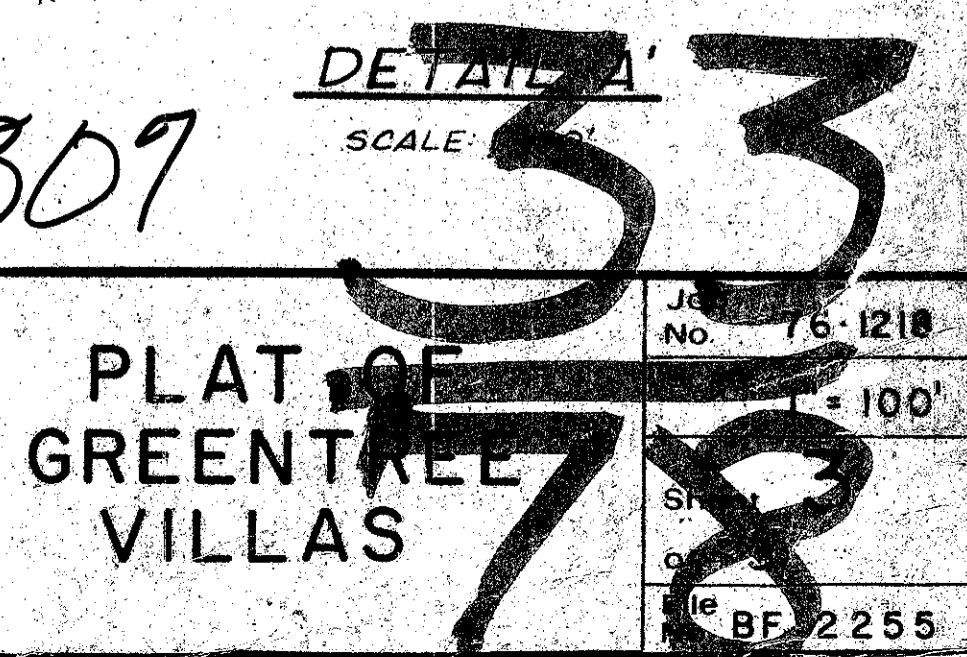
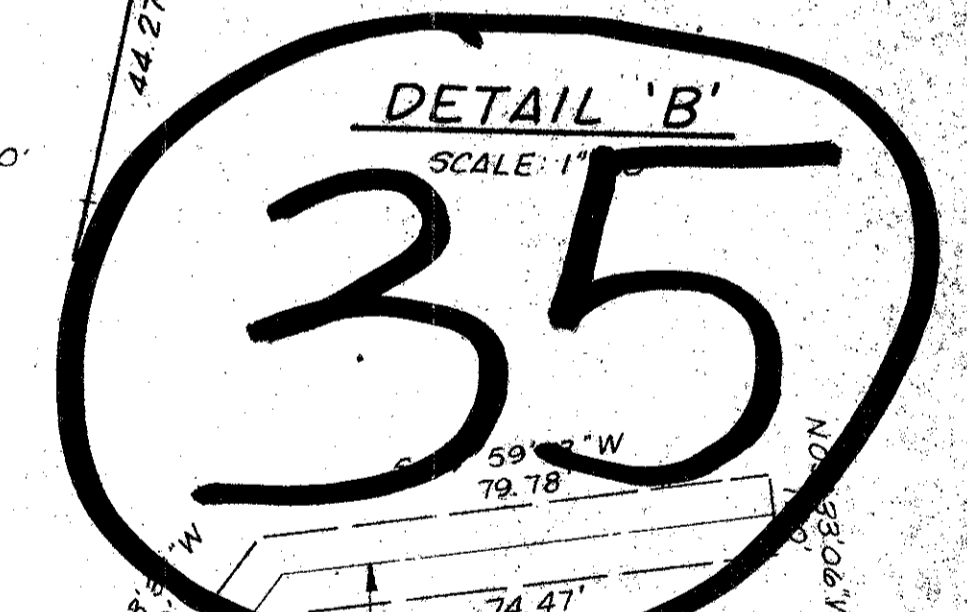
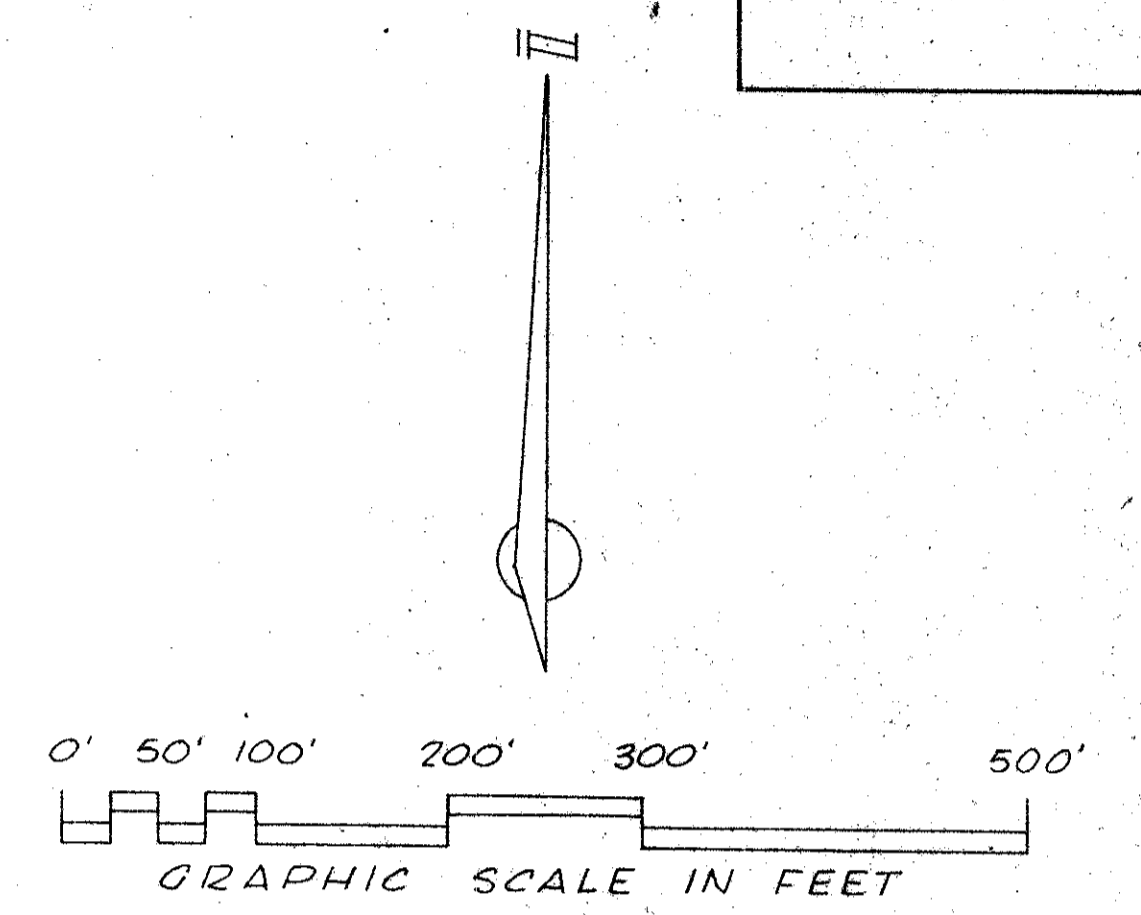
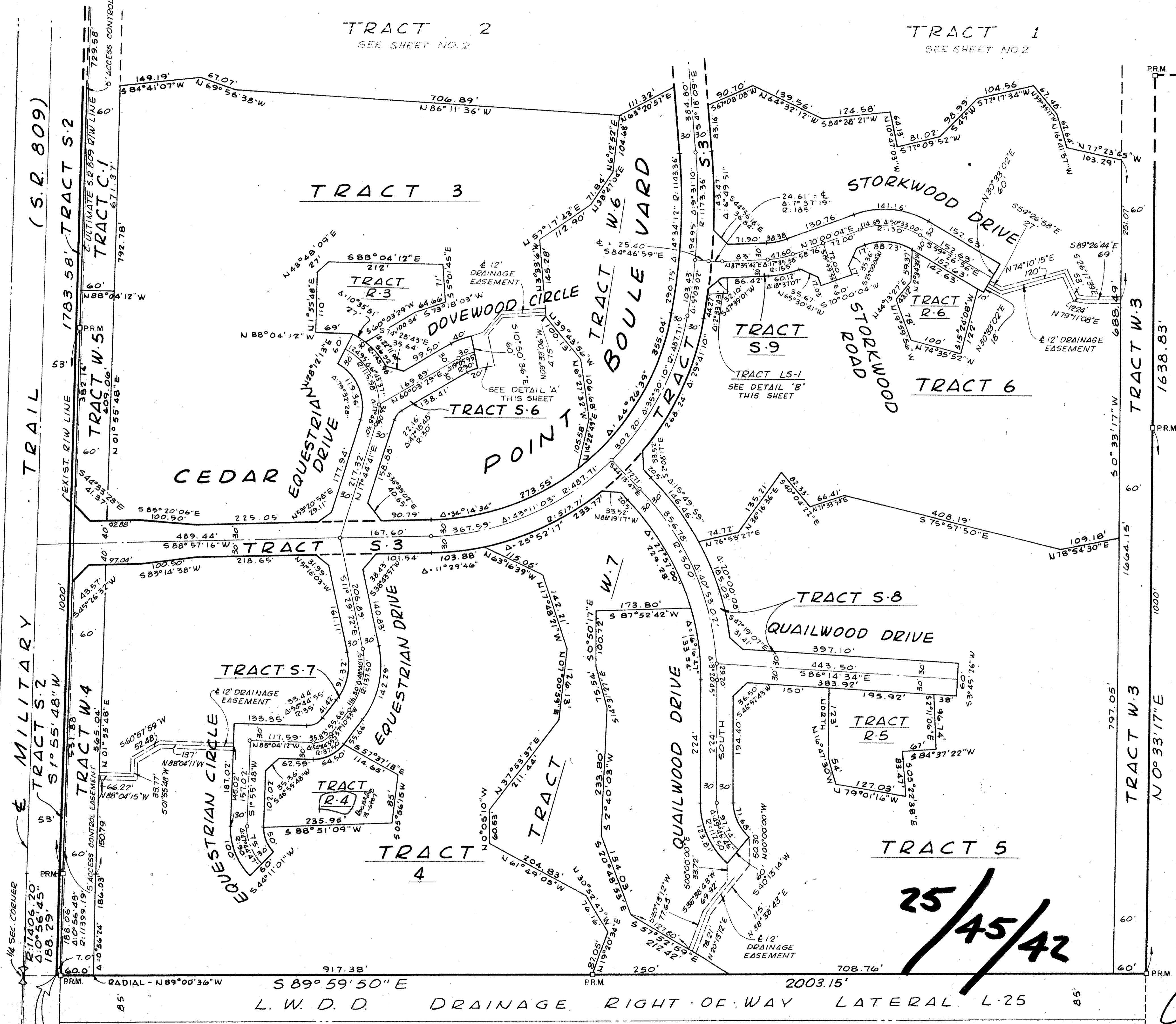


A PLANNED UNIT DEVELOPMENT IN COUNTRY CLUB TRAIL PLAT OF GREENTREE VILLAS IN THREE SHEETS, SHEET NO. THREE

78



GREENTREE VILLAS

Field Book No.	Pg.	ROBERT E. OWEN & ASSOCIATES, INC. ENGINEERS · PLANNERS · SURVEYORS WEST PALM BEACH FLORIDA	PLAT OF GREENTREE VILLAS 78	DATE
Design	D. M. WHITE			
Drawn	M. C. HEHN			
Checked	D. M. WHITE			
Date				

P.O.B.

EQUESTRIAN PLAT
P.B. 31 Pp. 75 & 76

0226-309