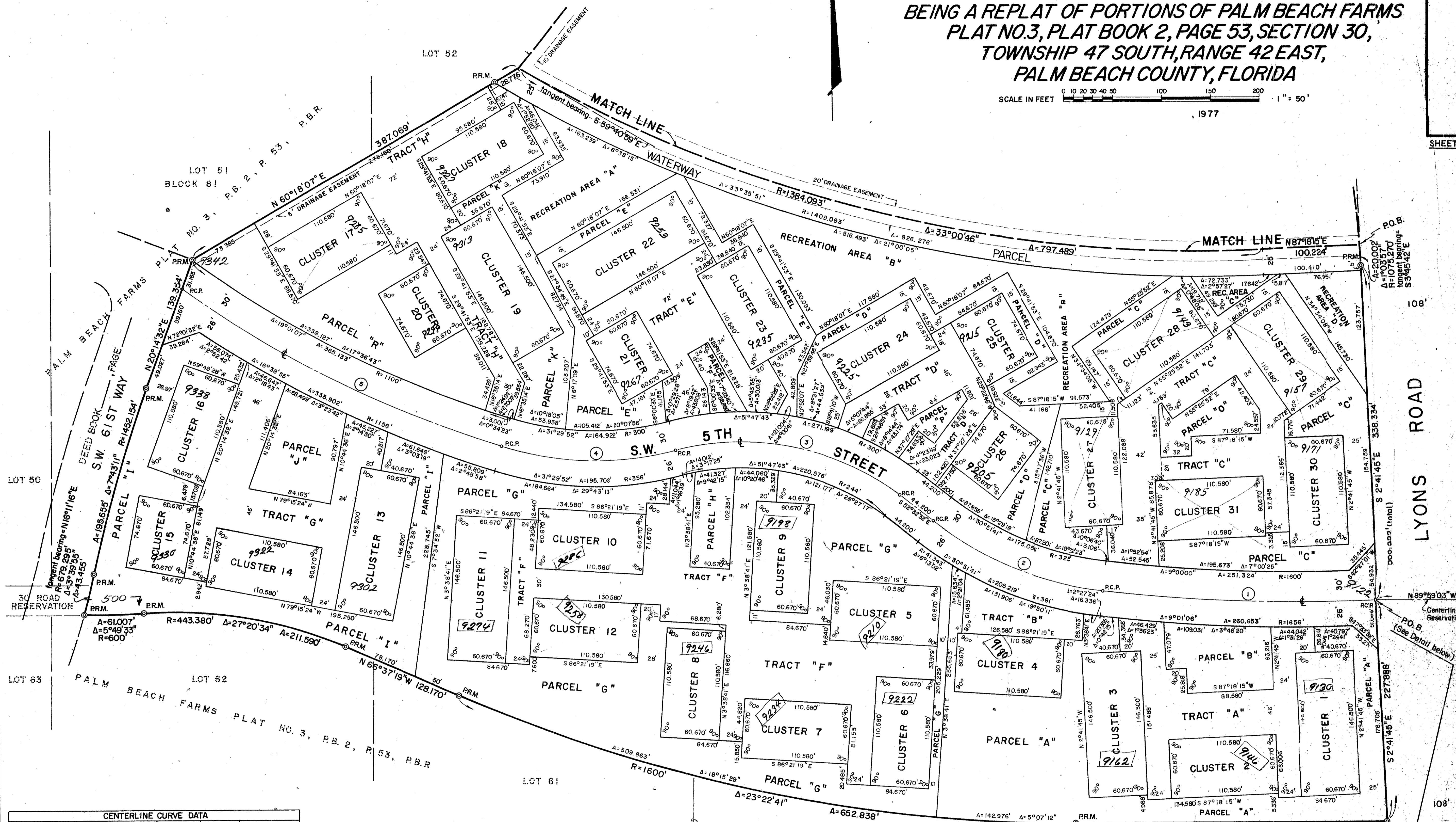


PLAT OF "THE GREENHOUSE OF BOCA" BEING A REPLAT OF PORTIONS OF PALM BEACH FARMS PLAT NO.3, PLAT BOOK 2, PAGE 53, SECTION 30, TOWNSHIP 47 SOUTH, RANGE 42 EAST, PALM BEACH COUNTY, FLORIDA

SCALE IN FEET 0 10 20 30 40 50 100 150 200 1" = 50' 1977

SHEET 2 OF 2 SHEETS



CENTERLINE CURVE DATA						
NO.	RADIUS	DELTA	ARC	TANGENT	CHORD	CHORD BEARING
1	1630'	9°55'19"	281.317'	141.009'	280.968'	N86°20'52"W
2	355'	30°51'41"	191.215'	97.988'	188.912'	N67°58'27"W
3	270'	51°47'43"	244.080'	131.091'	235.853'	S78°26'23"E
4	330'	31°29'52"	181.414'	93.063'	179.138'	S86°35'19"E
5	1130'	16°35'06"	366.534'	184.891'	364.930'	S63°32'50"E

- NOTES
- There shall be no buildings, structures, trees or shrubs placed in drainage easements.
  - There shall be no surface appurtenances permitted on canal maintenance easements.
  - PRM. indicates Permanent Reference Monument.
  - PCP. indicates Permanent Control Point.
  - Bearings refer to an assumed meridian of N02°15'59"W for the Range Line, Section 30-47-42.
  - P.B.R. indicates Palm Beach County Records.
  - Utilities, including franchised utilities, power and light and telegraph, water, sewer, cable television, wiring to street lights, and gas shall be installed underground.
  - Section data unavailable in this area. All surveys based upon block corners of PALM BEACH FARMS PLAT NO.3, Plat Book 2, Page 53, Palm Beach County Records.

Town House

LOT 60 BLOCK 81 PALM BEACH FARMS PLAT NO. 3, P.B. 2, P. 53, P.B.R. 0306-001

THE GREENHOUSE OF BOCA

THIS INSTRUMENT WAS PREPARED BY DENNIS BAUER McLAUGHLIN ENGINEERING CO. 400 NE 3rd AVE., FT. LAUDERDALE, FLA. Phone: 763-7611 33301

333 82